

THE ONGOING ASSEMBLY OF A CENTRAL CLUSTER GALAXY: PHASE-SPACE SUBSTRUCTURES IN THE HALO OF M87

AARON J. ROMANOWSKY¹, JAY STRADER², JEAN P. BRODIE¹, J. CHRISTOPHER MIHOS³,
LEE R. SPITLER⁴, DUNCAN A. FORBES⁴, CAROLINE FOSTER^{4,5}, JACOB A. ARNOLD¹

¹University of California Observatories, Santa Cruz, CA 95064, USA

²Harvard-Smithsonian Center for Astrophysics, Cambridge, MA 02138, USA

³Department of Astronomy, Case Western Reserve University, 10900 Euclid Ave., Cleveland, OH 44106, USA

⁴Centre for Astrophysics & Supercomputing, Swinburne University, Hawthorn, VIC 3122, Australia

⁵European Southern Observatory, Alonso de Córdova 3107, Vitacura, Casilla 19001, Santiago 19, Chile

Accepted by ApJ, 16 December 2011

ABSTRACT

The halos of galaxies preserve unique records of their formation histories. We carry out the first combined observational and theoretical study of phase-space halo substructure in an early-type galaxy: M87, the central galaxy in the Virgo cluster. We analyze an unprecedented wide-field, high-precision photometric and spectroscopic data set for 488 globular clusters (GCs), which includes new, large-radius Subaru/Suprime-Cam and Keck/DEIMOS observations. We find signatures of two substructures in position-velocity phase-space. One is a small, cold stream associated with a known stellar filament in the outer halo; the other is a large shell-like pattern in the inner halo that implies a massive, hitherto unrecognized accretion event. We perform extensive statistical tests and independent metallicity analyses to verify the presence and characterize the properties of these features, and to provide more general methodologies for future extragalactic studies of phase-space substructure. The cold outer stream is consistent with a dwarf galaxy accretion event, while for the inner shell there is tension between a low progenitor mass implied by the cold velocity dispersion, and a high mass from the large number of GCs, which might be resolved by a $\sim 0.5 L^*$ E/S0 progenitor. We also carry out proof-of-principle numerical simulations of the accretion of smaller galaxies in an M87-like gravitational potential. These produce analogous features to the observed substructures, which should have observable lifetimes of ~ 1 Gyr. The shell and stream GCs together support a scenario where the extended stellar envelope of M87 has been built up by a steady rain of material that continues until the present day. This phase-space method demonstrates unique potential for detailed tests of galaxy formation beyond the Local Group.

Subject headings: Galaxies: ellipticals and lenticulars, cD — Galaxies: halos

1. INTRODUCTION

The ultimate record of the formational histories of galaxies is found in the six-dimensional phase space of stellar positions and velocities, supplemented by additional information about ages and elemental abundances (primarily iron-based metallicities). The halos of galaxies are natural hunting grounds for assembly clues in phase-space because of the preservative effects of the long dynamical times, and since any material entering a galaxy naturally has to traverse its halo.

Indeed, it is a fundamental prediction of the current cosmological paradigm that the outer regions of galaxies should be constantly bombarded with smaller, infalling systems that persist as significant substructures while gradually becoming disrupted. This idea has been borne out qualitatively in recent years by observations of halo streams and shells in the nearby Universe (e.g., Helmi et al. 1999; Ibata et al. 2001; Belokurov et al. 2006; Tal et al. 2009; Martínez-Delgado et al. 2010; Cooper et al. 2011).

Massive elliptical galaxies are touchstones for this issue, since their spheroidal nature and their residence in the densest areas of the Universe suggest particularly vigorous accretion histories. Comparisons of these galaxies' stellar luminosity profiles at high and low redshifts now provide indirect evidence that their outer envelopes grow

tremendously in size up to the present day (e.g., Buitrago et al. 2008; van der Wel et al. 2008; Damjanov et al. 2009; van Dokkum et al. 2010; Cassata et al. 2011), which may be naturally explained by accretion and mergers in a cosmological context (Khochfar & Silk 2006; Naab et al. 2009; Hopkins et al. 2010; Oser et al. 2010, 2012).

The most extreme examples of ongoing assembly are expected to be the brightest cluster galaxies (BCGs), whose typical locations at the centers of clusters should involve very active merger histories (e.g., Ruzsowski & Springel 2009).¹ Current cosmologically-based models find that around half of the stellar mass growth of a present-day BCG occurred over the past 5 Gyr via gas-poor mergers (after an early formation epoch for the core regions; De Lucia & Blaizot 2007).

This theoretical picture has received very mixed support from comparisons of BCG stellar masses and surface brightness distributions at different redshifts (Whiley et al. 2008; Bernardi 2009; Collins et al. 2009a; Valentinuzzi et al. 2010; Ascaso et al. 2011; Stott et al. 2011). Surveys for major mergers in action have found that these contribute significantly to recent BCG growth (McIntosh et al. 2008; Liu et al. 2009; see also Brough et al. 2011),

¹ Although the central galaxy is often not technically the brightest object in a cluster, we will follow the convention of calling this the BCG.

but the contributions from minor mergers are unknown and the overall comparison to theory unclear. Part of the difficulty is that even if accretion and mergers are important growth processes, the frequency of observing an ongoing event can be fairly low. Thus it would be invaluable to go beyond purely photometric observations and delve into the phase-space of position, velocity, and metallicity for longer lived signatures (e.g., Johnston et al. 2008; Zemp et al. 2009).

Within the Local Group, detailed phase-space studies are being undertaken using individual stars (e.g., Koch et al. 2008; Gilbert et al. 2009; Starkenburg et al. 2009; Xue et al. 2011), but are currently impossible in more distant galaxies. Instead, bright stellar proxies may be used, such as planetary nebulae (PNe; Durrell et al. 2003; Merrett et al. 2003; Shih & Méndez 2010; Cortesi et al. 2011) and globular clusters (GCs). GCs are thought to form along with field stars, and as collections of $\sim 10^6$ stars each, they are visible at much greater distances, allowing their individual positions, line-of-sight velocities, and chemical properties to be measured as far away as ~ 50 Mpc (Richtler et al. 2011).

The “chemodynamics” of GCs provided the watershed evidence for the accretion origin of the Milky Way’s outer halo (Searle & Zinn 1978), where it is now thought that disrupting satellite galaxies have deposited many accompanying GCs (e.g., Bellazzini et al. 2003; Gao et al. 2007; Geisler et al. 2007; Lee et al. 2007; Forbes & Bridges 2010). A similar scenario is now evident in the nearby spiral M31, where some GCs are associated with halo substructures (Collins et al. 2009b; Mackey et al. 2010). In BCGs, the presence of GCs in enormous numbers (up to 5×10^4 per system) has long motivated suggestions that accretion is an important factor for these galaxies (Forte et al. 1982; Côté et al. 1998), although it is not clear how many of these GCs may have formed during in situ processes or mergers rather than being accreted.

Various GC and PN-based studies of the halo kinematics of giant ellipticals and BCGs have turned up evidence for substructures that may imply active accretion events or mergers (Côté et al. 2003; Romanowsky et al. 2009; Schubert et al. 2010; McNeil et al. 2010; Woodley & Harris 2011). In other cases, accretion events are suggested by photometric substructures or by broad kinematical or chemical halo transitions (Tal et al. 2009; Proctor et al. 2009; Coccato et al. 2009, 2010; Janowiecki et al. 2010; Forbes et al. 2011; Arnold et al. 2011; Mouhcine et al. 2011). However, in no case has a halo feature been observed and modeled in enough detail to determine its origin and the implications for galaxy formation.

To go beyond the previous work on nearby BCGs by carrying out detailed phase-space studies of their halos, there are two critical observational requirements beside sheer instrumental throughput: wide-field coverage and spectroscopic resolution. The former permits blind searches for halo substructures and demands a field of view of at least ~ 0.5 degree in order to probe galactocentric radii out to ~ 100 kpc or more in galaxies at ~ 15 Mpc distances. The latter allows for a wide mass range of accreted galaxies to be probed; e.g., if a BCG has a characteristic velocity dispersion of $\sigma \sim 300$ km s $^{-1}$ and the precision of velocity measurements for halo tracers is $\Delta v \sim 50$ – 100 km s $^{-1}$, as in many past surveys,

then the observations are sensitive to mass ratios down to $\sim (\Delta v/\sigma)^2 \sim 1:40$ – $1:10$ in dynamical mass. More minor mergers than these are certainly expected to be more frequent, and may comprise a dominant mode for halo assembly, so a velocity resolution of tens of km s $^{-1}$ ($\Delta v/\sigma \lesssim 0.1$) is preferable.

We present here the first wide-field, large-sample spectroscopic survey of a BCG with velocity resolution of $\Delta v/\sigma \sim 0.04$. Our subject is M87, the central elliptical in Virgo, the nearest galaxy cluster at a distance of ~ 16.5 Mpc. The GC system of M87 has seen decades of spectroscopic study (e.g., Huchra & Brodie 1987; Cohen & Ryzhov 1997; Hanes et al. 2001), but extending to radii of only ~ 40 kpc and with $\Delta v/\sigma \gtrsim 0.25$.

Until now, M87 could be characterized as a dynamically quiet galaxy, with only mild signs of interactions such as very faint stellar filaments in its far outer halo (Mihos et al. 2005; Janowiecki et al. 2010). Our new GC study reveals the kinematics of one of these faint streams, and unveils an unsuspected, enormous shell-like substructure in phase-space.

Our paper proceeds as follows. Section 2 describes the observations and data reduction, and presents a basic overview of the halo substructures. Sections 3 and 4 analyze the characteristics and statistical significance of the large inner shell and outer stream, respectively. Theoretical analyses of the substructure origins and dynamics are explored in Section 5. Section 6 summarizes the findings and outstanding questions.

2. OBSERVATIONS AND BASIC RESULTS

We have revisited M87 in a new-era high-precision wide-field survey of GCs. The main component of our data set is presented and discussed in detail in Strader et al. (2011, hereafter S+11). In brief, it is based on photometry from CFHT/Megacam and Subaru/Suprime-Cam optical images, and spectroscopy from MMT/Hectospec, Keck/DEIMOS, and Keck/LRIS. New line-of-sight velocities were obtained for 451 GCs over a series of campaigns from 2007 to 2010, extending over a range in galactocentric radius of ~ 1 – 35 arcmin (~ 5 – 170 kpc).

The first subset of the new data extended along a narrow track eastwards of M87’s center, in search of any kinematical transition between the BCG and the surrounding cluster. A peculiar fluctuation in the velocity dispersion profile was indeed found at a radius of ~ 9 arcmin (~ 45 kpc), which was the first indication of an inner-halo shell-like feature as we will discuss later. Subsequent data (the large majority of the total sample) were obtained at generally random position angles around the galaxy.

In a parallel campaign presented here for the first time, we observed intensively the region around the outer stellar “stream A” (Mihos et al. 2005; Janowiecki et al. 2010; Rudick et al. 2010; Krick et al. 2011), at radii of ~ 35 – 50 arcmin (~ 170 – 240 kpc). GC selection for spectroscopic follow-up was obtained from a variety of images as they became available: archival Subaru/Suprime-Cam (Miyazaki et al. 2002) *BVI* imaging, the Megacam *gri* imaging mentioned above (Harris 2009), and our own new Suprime-Cam imaging in *gi*. Given the incomplete spatial coverage of the first two imaging data-sets, the third data-set provides our default photometric source

for the stream area. These images were taken on 2009 Apr 21, with intermittent transparency, $\sim 1''$ seeing, and exposure times of 300 sec in each band.

Our spectroscopic follow-up of the stream GCs used Keck/DEIMOS and observing and analysis techniques established in our previous work on GC kinematics (Romanowsky et al. 2009; Arnold et al. 2011; Foster et al. 2011; S+11). Four masks were observed during the nights 2009 Mar 23, 2010 Mar 11–13, and 2010 Jun 12, with generally good conditions and exposure times varying from 0.5 to 2 hours. The spectra cover an approximate spectral range of 6500–9000 Å at a moderate resolution (1.5 Å FWHM) that allows the derivation of precise line-of-sight velocities.

The data were reduced in a standard manner, including bias subtraction, flat fielding, wavelength calibration, and sky subtraction, followed by optimal extraction. Heliocentric line-of-sight velocities were derived through cross-correlation with a range of stellar templates, using only the region around the Calcium II triplet (CaT; H α , if available, was used for confirmation of borderline cases). Some background galaxies were identified via examination of the extracted spectra and excluded from further analysis.

The velocity uncertainties were estimated by combining in quadrature the statistical uncertainties from the cross-correlation with the systematic uncertainties from using different stellar templates. The uncertainties for the confirmed GCs ranged from 5 to 18 km s $^{-1}$, with their reliability supported by repeat observations of four GCs and five stars. The characteristics of the spectroscopically-confirmed GCs (20 of them), stars, and galaxies in the stream region are provided in Table 1. We also targeted five PN candidates from Feldmeier et al. (2003) but found no H α emission in their spectra (objects 7-14, 7-18, 7-51, 7-58, 7-65).

TABLE 1
SPECTROSCOPIC OBJECTS IN M87 OUTER STREAM REGION

ID	R.A. [J2000]	Decl. [J2000]	i_0	$(g-i)_0$	v [km s $^{-1}$]
<i>confirmed:</i>					
R8922	187.36271	12.84842	20.07	1.01	1460 \pm 6
R10106	187.35946	12.87679	19.52	0.99	1500 \pm 5
R10806	187.36816	12.89351	21.36	1.08	839 \pm 8
R10814	187.35690	12.89390	21.38	0.85	1386 \pm 10
R11987	187.36719	12.92166	22.24	0.78	1100 \pm 10
R13629	187.32990	12.96460	21.65	0.80	1112 \pm 7
R14045	187.35667	12.97587	21.72	0.80	852 \pm 8
R14100	187.29791	12.97751	21.77	0.97	1154 \pm 11
R15088	187.32974	13.00221	21.09	0.76	1395 \pm 10
R15675	187.27000	13.01773	21.98	0.84	1141 \pm 18
R16138	187.41290	13.02971	22.07	1.13	1063 \pm 12
R16501	187.36578	13.03980	22.33	0.71	1590 \pm 12
R16571	187.36916	13.04153	20.44	0.79	1577 \pm 9
R17084	187.33063	13.05539	21.18	0.83	1490 \pm 8
R17186	187.23102	13.05824	20.41	0.84	1291 \pm 6
R17522	187.34823	13.06668	20.89	0.78	1467 \pm 5
R18039	187.34714	13.08054	22.08	0.76	673 \pm 9
R18045	187.31874	13.08087	21.47	0.81	1462 \pm 11
R19909	187.33585	13.12520	21.79	0.83	1437 \pm 12
R21956 ²	187.23676	13.16944	19.90	0.87	1876 \pm 7
<i>marginal:</i>					
R12580	187.39820	12.93529	22.01	0.74	1085 \pm 16
R13657	187.39522	12.96553	22.14	0.78	1222 \pm 18
R15867	187.41155	13.02209	22.31	0.75	1244 \pm 14

² Probably bound to NGC 4461.

TABLE 1 — *Continued*

ID	R.A. [J2000]	Decl. [J2000]	i_0	$(g-i)_0$	v [km s $^{-1}$]
R16402	187.32270	13.03704	22.45	1.21	898 \pm 17
<i>stars</i> ³ :					
R7403	187.37441	12.81474	17.55	0.59	−3 \pm 48
R7754	187.37956	12.82188	19.87	1.91	14 \pm 74
R8193	187.38146	12.83134	19.29	0.69	−148 \pm 21
R8376	187.37963	12.83570	20.52	0.98	−134 \pm 23
R8798	187.39239	12.84514	18.86	0.72	65 \pm 21
R9363	187.34117	12.85885	19.34	0.88	40 \pm 7
R10146	187.34439	12.87770	20.45	0.65	58 \pm 20
R10837	187.36675	12.89449	17.67	2.65	42 \pm 14
R11062	187.40232	12.89997	15.38	1.74	−24 \pm 5
R11805	187.39709	12.91762	22.47	1.33	189 \pm 20
R11872	187.36193	12.91931	19.96	1.11	45 \pm 15
R12125	187.40527	12.92458	20.42	0.74	145 \pm 6
R12313	187.29011	12.92963	15.75	0.49	4 \pm 20
R12657	187.34624	12.93754	17.48	1.09	10 \pm 5
R12691	187.40031	12.93805	16.32	2.03	−20 \pm 5
R12891	187.34345	12.94330	20.44	0.84	177 \pm 51
R13164	187.30174	12.95084	20.11	0.69	−41 \pm 25
R13188	187.23932	12.95184	17.91	1.33	35 \pm 17
R13506	187.46370	12.95930	15.37	0.35	−6 \pm 8
R13992	187.33976	12.97469	19.83	1.80	4 \pm 36
R14054	187.45815	12.97566	19.07	0.74	98 \pm 5
R14166	187.33685	12.97877	20.88	1.03	198 \pm 7
R14317	187.34125	12.98226	15.49	0.92	30 \pm 5
R14391	187.35850	12.98435	19.70	0.69	−87 \pm 6
R14427	187.44737	12.98488	20.96	1.03	213 \pm 14
R14800	187.26911	12.99484	15.70	1.67	0 \pm 18
R15119	187.40424	13.00259	17.83	2.02	9 \pm 5
R15179	187.44657	13.00379	17.83	0.87	70 \pm 5
R15494	187.45031	13.01196	19.09	0.82	−3 \pm 5
R15721	187.30143	13.01873	16.86	0.59	58 \pm 18
R15838	187.42486	13.02142	21.09	0.72	−31 \pm 10
R15983	187.36178	13.02593	21.37	1.89	55 \pm 32
R16488	187.39562	13.03932	19.52	1.12	108 \pm 5
R17262	187.41103	13.05953	22.24	0.64	110 \pm 24
R17841	187.35704	13.07556	22.00	0.72	185 \pm 12
R18139	187.27810	13.08366	22.26	1.27	−84 \pm 26
R18154	187.34945	13.08374	18.48	1.54	−57 \pm 5
R18730	187.27131	13.09786	21.26	0.80	−214 \pm 15
R19052	187.27947	13.10543	15.40	0.97	−35 \pm 15
R19452	187.37246	13.11475	16.77	2.38	−1 \pm 5
R20070	187.26784	13.12938	17.82	0.67	127 \pm 14
R20445	187.30037	13.13758	20.15	0.76	103 \pm 6
R20496	187.38952	13.13803	21.20	0.78	32 \pm 16
R20765	187.24172	13.14418	20.54	0.72	222 \pm 18
R21009	187.23749	13.14917	15.18	1.85	5 \pm 17
R21082	187.29307	13.15058	17.69	1.30	−6 \pm 8
R22195	187.33737	13.17345	20.94	0.79	73 \pm 9
R22421	187.33604	13.17731	21.49	0.57	143 \pm 16
R22843	187.32868	13.18426	20.83	0.71	22 \pm 13
<i>galaxies:</i>					
R12858	187.23866	12.94289	22.24	0.71	...
R13471	187.25251	12.95961	21.89	1.05	...
R14229	187.22466	12.98077	22.03	0.94	...
R15594	187.25608	13.01557	22.41	0.98	...
R15685	187.23852	13.01819	22.40	1.37	...
R17134	187.23876	13.05692	22.59	0.77	...
R21550	187.21381	13.15999	22.97	0.69	...

NOTE. — Photometry is from Subaru-Suprime/Cam imaging using 4-pixel aperture magnitudes, bootstrapped to the Sloan Digital Sky Survey and then corrected for Galactic extinction following Peek & Graves (2010). The uncertainties in the stellar velocities are indicative only, and not as carefully characterized as for the GCs. The most likely objects belonging to the cold GC stream are R16501, R16571, R17084, R17522, R18045.

Our new spectroscopic data thus provides a total of 468 velocities of M87 GCs (we exclude one large-radius object

³ A simple velocity boundary of 250 km s $^{-1}$ has been used to separate stars and GCs, but some of the higher-velocity stars might in principle be low-velocity GCs.

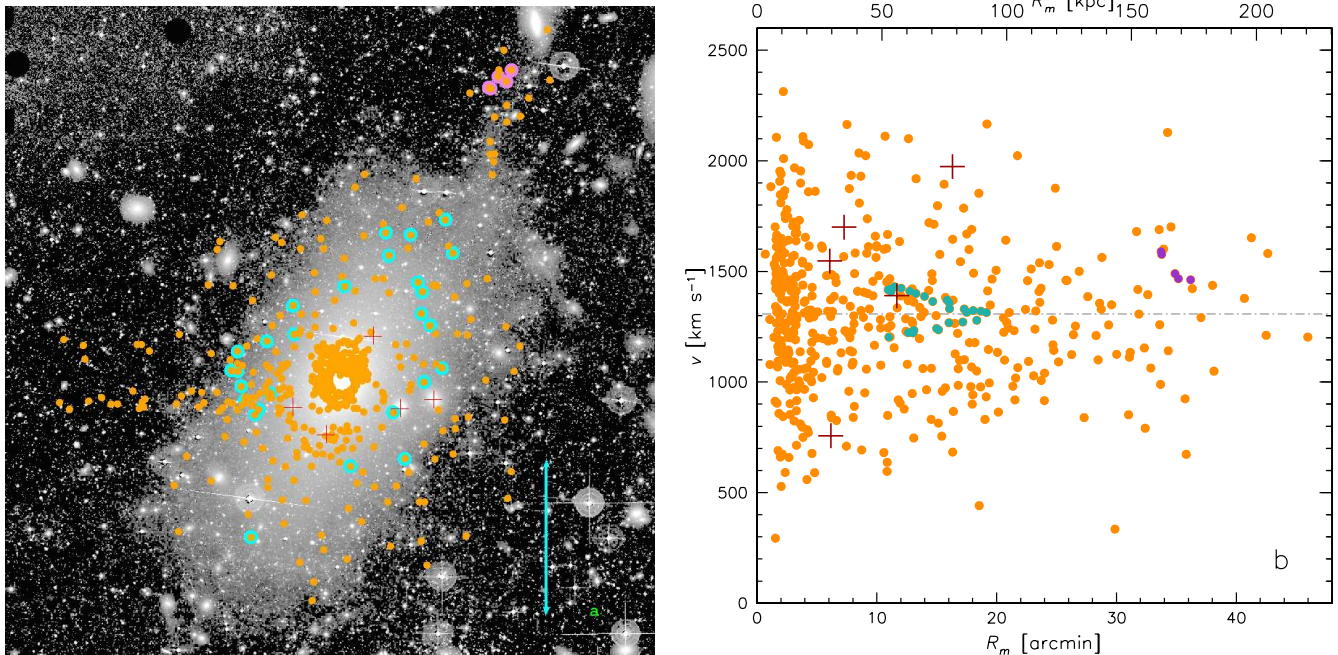


FIG. 1.— Overview of spectroscopic GC observations around M87. Orange circles show confirmed GCs, red crosses show five centrally-located low-luminosity elliptical galaxies, and candidate substructure members are highlighted with blue and purple. These are an inner shell (at radii of ~ 10 – 20 arcmin) and an outer stream (at ~ 35 arcmin), where the most likely members are identified by maximum-likelihood fitting to simple models (see Section 3.4). (a): Data locations in positional space, overplotted on a deep optical image (down to a V -band surface brightness of $\mu_V \sim 28.5$ mag arcsec⁻²; Janowiecki et al. 2010), with a 100 kpc (21 arcmin) scale illustrated by a bar with arrows. (b): The phase space of line-of-sight velocity vs. galactocentric radius, with the dot-dashed horizontal line representing the systemic velocity of M87 (1307 km s⁻¹). The radius plotted is the intermediate-axis radius (see Section 3.1). The velocity uncertainties are not shown, but are generally smaller than the point sizes in the plot. The satellite galaxy velocities are from Hypercat (Paturel et al. 2003), where we note that the value for NGC 4486A was recently dramatically revised by Prugniel et al. (2011).

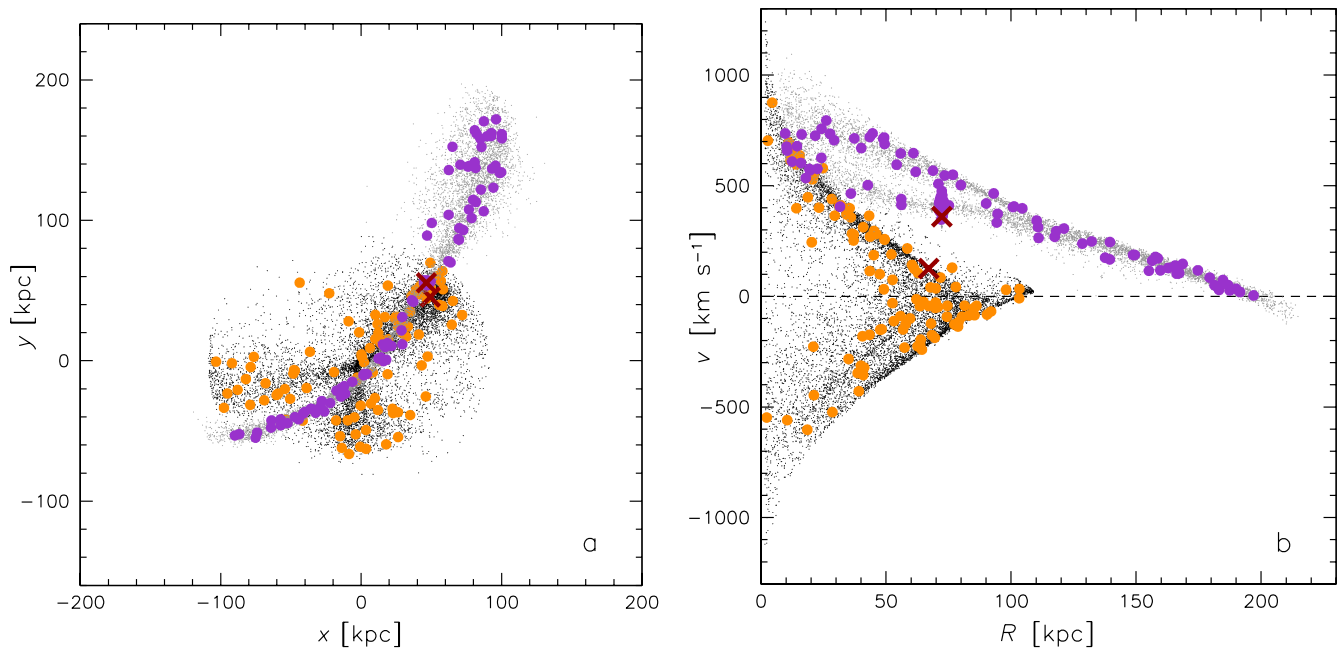


FIG. 2.— Simulations of galaxies falling into an idealized central cluster potential, As in Figure 1, both positional space (a) and phase space (b) are shown. In each simulation, subsamples of 100 and 10^4 particles are plotted as large and small dots, respectively. The red \times symbols show the locations of the progenitor nuclei. Two independent simulations are superimposed, representing initial apocentric distances of 90 and 200 kpc (using small black and large orange dots, and small gray and large purple dots, respectively). These two cases are intended to be qualitative analogues to the M87 shell and stream (Figure 1), with the 0.2% particle subsamples as “GCs” (with small measurement errors added). The snapshots shown correspond to 3.5 Gyr (~ 10 – 20 dynamical times) after the initial apocenters. In the first case, there are sharp features in phase space even when the tidal debris is well mixed in positional space (which happens more rapidly for a smaller initial apocenter). See Section 5 for further details.

probably associated with the Virgo galaxy NGC 4461, but retain another that may be bound to the small elliptical NGC 4478). Although a great deal of additional spectroscopic data of M87 GCs are available in the literature, we do *not* use most of the previous data, since the typically large measurement errors impede the study of cold substructures. Instead, we incorporate only 20 high resolution measurements from the literature (with median uncertainties of 4 km s^{-1} ; Hasegan et al. 2005; Hasegan 2007; Evstigneeva et al. 2007). Note that our treatment of previous data differs slightly from the convention of S+11, who incorporated all data published since 2003.

The combined literature and new data provide a total sample of 488 GC line-of-sight velocities around M87, extending from its central regions out to 200 kpc in its halo, where the median velocity uncertainties are 14 km s^{-1} . This contrasts with most previous work on GC kinematics beyond the Local Group, with typical velocity errors of $\sim 30\text{--}100 \text{ km s}^{-1}$. Our GC sample also has an extremely low rate of contamination from foreground stars and background galaxies.⁴ This is the largest GC dataset of this quality in any galaxy, providing an unprecedented opportunity for exploring phase space for formational relics.

We present a basic overview of the GC observations in Figure 1(a,b), with a plot of positions in real-space along with a phase-space plot of velocity vs. galactocentric radius. It is important to note that most of the *spatial* substructure apparent in the GC data is just a product of inhomogeneous spectroscopic sampling: e.g., the “gap” at a radius of ~ 7 arcmin, and elongated extensions to the far East and Northwest. Our analyses will be relatively insensitive to such inhomogeneities since we will focus on the distribution of velocities as a function of galactocentric radius. Furthermore, the sampling effects will be built in to our statistical tests for substructure.

Most of the GCs show a broad spread of velocities reflecting a dynamically relaxed system, but there are two sharper features that stand out in phase-space. The first is a small elongated “stream” of GCs at 150 kpc, associated with the known stellar filament, The second is a large chevron-shaped overdensity between 50 and 100 kpc, which we denote the “shell”. It is an enormous structure spread out over $\sim 10^4 \text{ kpc}^2$ on the sky, and is not identifiable with any previously known photometric feature (Figure 1(a)). The statistical significance of these two substructures will be demonstrated in Sections 3 and 4, where we also find independent support from their distinct GC metallicity distributions.

Both features are most naturally explained as the shredded remnants of infalling galaxies, which we will investigate in Section 5 using numerical simulations. To orient the discussion of the rest of the paper, we present illustrative results from these simulations in Figure 2,

⁴ Our sample of “GCs” includes some mysterious objects termed ultra-compact dwarfs, which have sizes of $\sim 10 \text{ pc}$ or more, in contrast to classical GCs with sizes of a few pc. Whether or not there are two or more classes of object, or a continuum of GCs with different properties, is a major scientific question that we cannot resolve here (see Brodie et al. 2011). Therefore although we know for a small subset of our spectroscopic sample that the sizes are unusually large, we retain these in any case as tracer particles in the halo (excluding only S923 which has a peculiar morphology).

which broadly reproduce some of the general features of the data.

3. INNER SHELL ANALYSIS

Here we characterize the properties of the large shell identified in Figure 1(b), and attempt to establish its statistical significance. We exclude the outer-stream data set from these analyses, thereby focusing on the main part of the data set which has relatively unbiased spatial sampling.

In Section 3.1 we compare the use of different conventions for radial distance. We carry out a group-finding analysis and quantify the entropy in the phase-space data in Sections 3.2 and 3.3, and perform maximum-likelihood fitting of simple shell models in Section 3.4. In Section 3.5 we analyze the shell GC color distributions, and in Section 3.6 consider the implications for the shell progenitor.

3.1. Radius convention

One of the greatest challenges in detecting and analyzing substructures in extragalactic systems is decoding the multi-dimensional information contained in observations. The dynamical definition of a substructure is that it occupies a distinct region in some phase-space of physical parameters that are linked to orbital trajectories. This could be a space defined by the integrals of motion, such as the energy and angular momentum in a spherical gravitational potential, or it could be the six-dimensional observational phase-space of position and velocity.

To pick out a substructure from a background of unrelated structures, it helps to link the observations to orbital solutions. This can be tricky enough with 6-D data as available for some objects within the Milky Way, but in distant galaxies, only three dimensions are normally observable (two of position, one of velocity). This “projection” of phase space typically smears out the orbital tracks and can make substructure inferences degenerate.

If one already knew a priori the orbital characteristics of a substructure, one could apply an optimal coordinate transformation to the observations that would maximize the contrast in a “reduced” phase-space plot. One of the most basic reductions to try is converting the two spatial positions to a galactocentric radius, since in the limit of a spherical potential and either a radial or a circular orbit, the particles will outline a characteristic chevron-shaped track in the phase-space of radius and line-of-sight-velocity (cf. Figure 1 of Rix et al. 1997).

Real galaxies are not perfectly spherical, and in dynamical modeling there is a standard modification to the above transformation that corrects for flattening to first-order. This is to use an ellipse-based circular-equivalent or “intermediate-axis” radius. If x and y are projected coordinates along a galaxy’s major and minor axes, respectively, then the simple projected radius is:

$$R_p = \sqrt{x^2 + y^2}. \quad (1)$$

The equivalent radius, given an axis ratio q , is:

$$R_m = \sqrt{qx^2 + \frac{y^2}{q}}. \quad (2)$$

This convention allows one to conserve the area (and approximately the mass) enclosed within an elliptical isophote when transforming to a circularized one-dimensional model. It is also equivalent to recovering

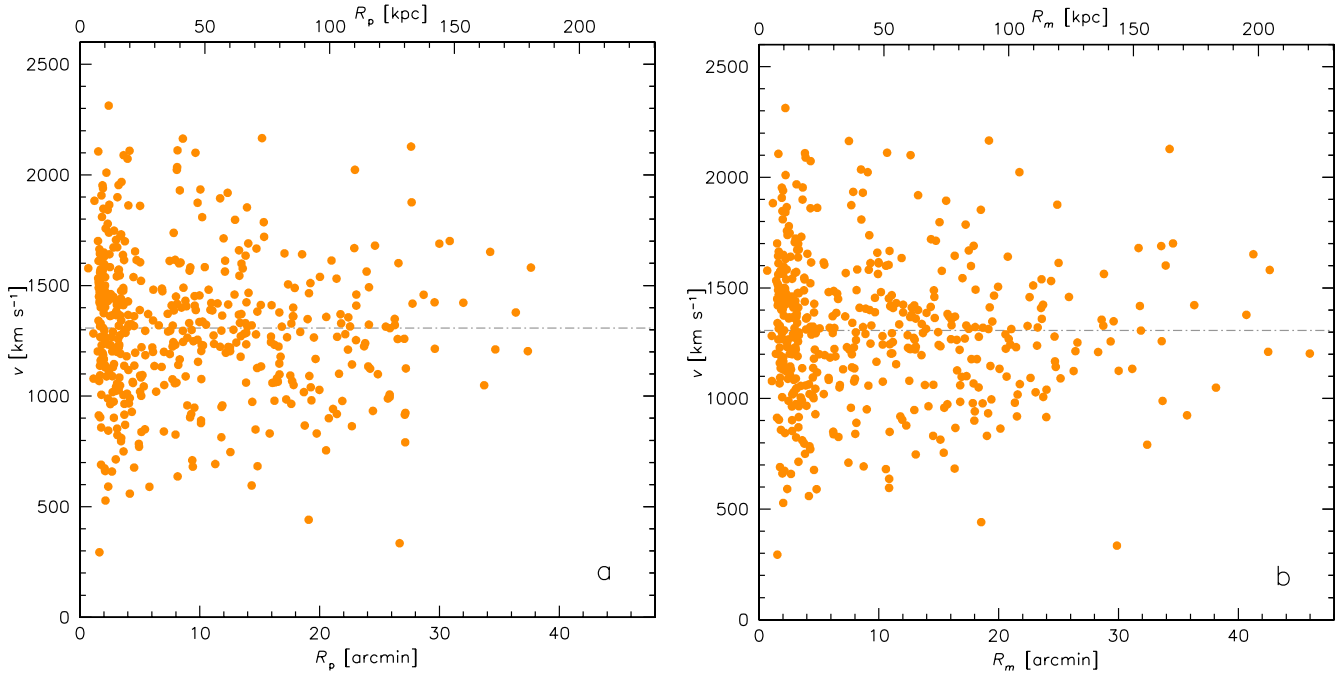


FIG. 3.— Radius-velocity phase-space of GCs in M87, omitting the objects in the outer stream region, where different conventions for the galactocentric radius are used. (a): simple radius. (b): ellipse-based radius (see Figure 1(b), and the main text for details). The ellipse-based radius causes the shell-like feature to appear more distinct.

a constant radius r in three-dimensions for an inclined thin disk.

The next question is what value for q to use, as both the flattening of the observable objects and of the unobserved gravitational potential could be important. Unfortunately, in the outskirts of M87, neither of the flattenings is well constrained (i.e., for the GC system or for the potential which is dominated by dark matter). It was found in S+11 (figure 7) that the GC system has a typical $q \sim 0.75$ at $R_m \sim 2' - 10'$ ($\sim 5 - 50$ kpc), while possibly decreasing with radius. At larger radii, the measurement is more difficult, but we have used a maximum-likelihood technique to estimate a possible range of $q \sim 0.55 - 0.75$, at $R_m \sim 15' - 20'$ ($\sim 70 - 100$ kpc).

Our constraints on $q(R_m)$ for the GCs are consistent with the profile for the *stars* derived by Kormendy et al. (2009), where q declines from ~ 0.9 at $R_m \sim 1'$ to ~ 0.55 outside $R_m \sim 10'$. We therefore adopt these stellar results for our default model for the GCs, for the sake of having smooth, plausible profiles of q and position angle with radius.⁵

Figure 3 then compares radius-velocity phase-space plots for the M87 GCs, using both the simple and the elliptical radius. The cold shell at ~ 50 kpc appears considerably sharper when using the elliptical radius, and we suspect that it may be easier to find substructures in other data sets if the R_m convention is used.

⁵ A more recent study of M87 with deeper surface photometry found that the stellar-light flattening becomes even stronger at large radii, reaching $q \sim 0.4$ at $R_m \sim 20'$ (Janowiecki et al. 2010). This is clearly inconsistent with the flattening of the GC system, and it would be inappropriate to use this profile for our analyses. Both the Kormendy and the Janowiecki profiles agree on a position angle of $\sim 150^\circ$ at large radii, while our GC analysis is more suggestive of $\sim 105^\circ - 135^\circ$. We do not ascribe much credence to this inconsistency, given the difficulties with background contamination and spatial incompleteness at large radii, and given the much better consistency between stars and GCs at small radii.

We will adopt this R_m transformation as our default for the analyses used in the rest of this paper, while issuing some caveats. One is that it is not entirely clear from a theoretical standpoint why the transformation should work: an accretion event generally defines its own orbital plane that will not necessarily align with the apparent shape of the rest of the galaxy. It could be that we are seeing an effect related to the disrupted accretor being highly spread out in the host potential.

The other concern from an observational standpoint is that the $q(R_m)$ profile for the GCs is not well determined, and fairly small changes in the radius-transformation (of $\sim 1'$) would noticeably affect the inferred morphology of the substructure, causing it to lose some of its apparent sharpness in phase-space. Such “blurring” would be expected if there is a genuine cold feature, and if one deviates from an optimal coordinate transformation as discussed above (we have verified this effect using mock data simulations that we will discuss later). However, we consider it more difficult to artificially *sharpen* phase-space features through a transformation error.

In summary, the choice of the radius in the phase-space diagram is a source of systematic uncertainty that is difficult to quantify. Where relevant in our analyses, we will also consider the possibility that the substructure is more amorphous than in our default model (e.g., as in Figure 3(a)).

3.2. Group finding

To ascertain the veracity of the shell, rather than rely only on the notoriously misled human eye which is good at creating patterns out of random noise, we examine several different types of models and statistical tests. This is an aspect that has been underdeveloped in previous work on GC kinematics around early-type galaxies.

Our first step is to use a group-finding algorithm, based on a standard friends-of-friends approach (e.g., Perrett

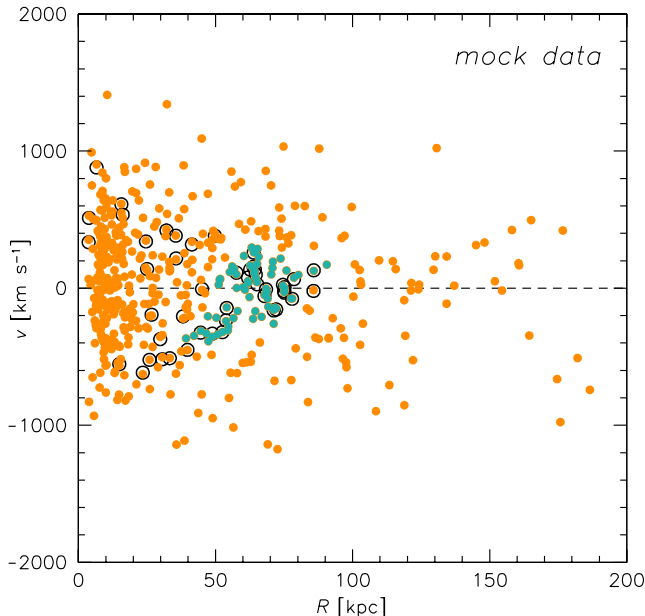


FIG. 4.— Phase-space group finding in a mock data set constructed from a simulated accretion event (see Figure 2(b)) superimposed on a randomized population of GCs. The genuine shell objects are shown as black circles, with velocities that differ slightly from the mock data set because of simulated observational errors. The general morphology of the substructure is recovered by the group-finding algorithm (blue dots). Compare application to the real data in Figure 1(b).

et al. 2003; Rudick et al. 2009). We define a distance between objects of:

$$\Delta s = \sqrt{\left(\frac{\Delta \log_{10} R_m}{w_R}\right)^2 + \left(\frac{\Delta v}{w_v}\right)^2}, \quad (3)$$

where w_R and w_v are radius and velocity scale factors that act inversely as weights. Note that our adopted two-dimensional phase-space metric differs from the three-dimensional (x, y, v) metric commonly used, which is suited for very localized substructures that have had little mixing, but we find that it does not work well for structures like shells and long streams that have elongated “diagonal” morphologies in phase-space. Using the 3-D metric may have caused large-scale substructures to be missed in the past.

A group is defined as a set of objects separated by less than a linking length Λ in phase space, which is in turn defined relative to the mean interparticle spacing $\langle \Delta s \rangle$ by a dimensionless parameter λ . We then have the criterion:

$$|\Delta s| < \Lambda = \lambda \langle \Delta s \rangle. \quad (4)$$

The next step is to choose the free parameters (w_R, w_v, λ) in the algorithm, where the objective is to maximize the sensitivity to real features in the data while minimizing the incidence of false groups and linkages. As a starting point, we construct mock data sets based on simulations of an accretion event (which we will discuss in detail later). To represent the shell, we select 47 particles, a number that is chosen to mimic the real data set, in the sense that the simulation has 27 particles in the same radial region where we find a shell in the real data (which has an estimated 27 GCs as we will see later).

We then fill out the rest of the mock data set by adding 422 GCs drawn from a Gaussian velocity distribution

with $\sigma = 450 \text{ km s}^{-1}$, and with positions corresponding to those in the real data set, but randomized by 20% in order to reduce any lingering spatial substructures. Throughout this paper, we will construct similar, smooth “background” GC populations, which would be unrealistic at some level if the halo were rich in substructures of various masses and stages of dissolution. In the future, one could consider constructing background distributions based on a range of theoretical models for halo accretion histories, but for the purposes of this paper, we focus primarily on the null hypothesis of a halo with *no* substructure. A caveat to then keep in mind is that the large “shell” which we recover could in principle consist of two or more distinct substructures that overlap in the observable phase-space and conspire to masquerade as a single structure.

Note that the value of $\sigma = 450 \text{ km s}^{-1}$ is larger than the $\sim 300 \text{ km s}^{-1}$ of the real data, which is done to be consistent with the simulations’ circular velocity and larger shell velocity width. We will later rescale the resulting group-finding parameters to suit the real data. The exact velocities of the mock data set are also convolved with small errors corresponding to the observational uncertainties in the real data.

We find optimum parameters for the simulated data set of $w_R = 0.035 \text{ dex}$, $w_v = 50 \text{ km s}^{-1}$, $\lambda = 0.07$, with acceptable variations around these values at the $\sim 20\%$ level. The group-finding results are shown in Figure 4: a group of 70 objects is identified, which reproduces the broad morphology of the shell’s limb (cf. Figure 2(b)) and recovers many of the genuine shell members along with many false associations. This exercise provides some confidence in the simple group-finding approach for recovering cold phase-space substructures that comprise only $\sim 10\%$ of a sample. However, the individual objects assigned to the substructure can include a high degree of contamination. This fact, combined with the potential sensitivity of the group-finding parameters to the details of the data sampling and of the substructure properties, motivates exploring alternative algorithms (which we do below) as well as the future development of more efficient phase-space group-finders.

Now after rescaling the foregoing simulation-based parameters, we adopt the following for use with the real data: $w_R = 0.035 \text{ dex}$, $w_v = 30 \text{ km s}^{-1}$, $\lambda = 0.07$. The group-finding algorithm then recovers a shell-like substructure with 68 members, around half of which may be false associations, which we illustrate with Figure 5(a). Given the uncertainty in the radius convention discussed in Section 3.1, we also carry out the same procedure while using the simple radius R_p . We find in this case a group with 80 members, demonstrating that our detection of a large phase-space substructure in M87 is not strongly sensitive to the radius convention.

To further evaluate the statistical significance of this shell, we carry out Monte Carlo simulations of underlying smooth data sets. We generate 100 mock GC data sets, using in each case the same radial locations as in the real data, but substituting a random velocity drawn from a Gaussian distribution with $\sigma = 324 \text{ km s}^{-1}$ (which is the dispersion found in the real data).

We then run the group-finding algorithm with the same parameters as for the real data. The median largest group size found (outside the crowded central regions

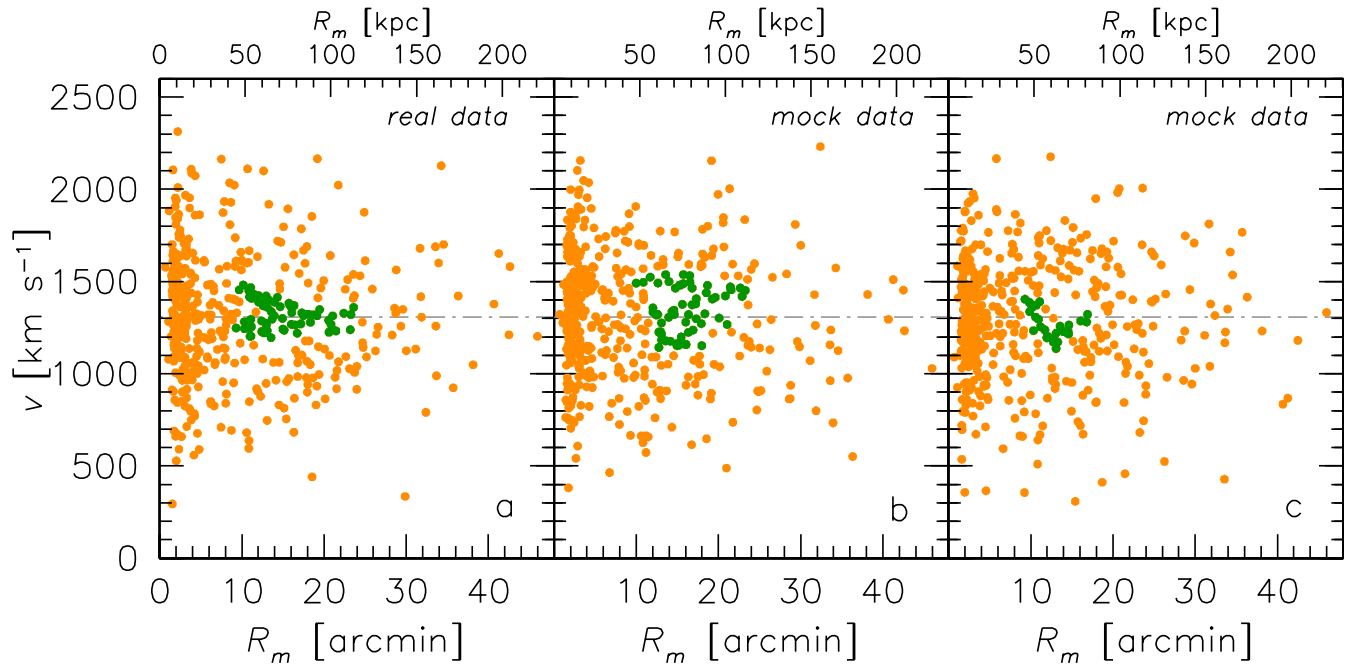


FIG. 5.— Group-finding of GCs in phase space. Orange dots show the parent GC population, while green dots show the largest identified groups in each data set. (a): the real M87 data (where the outer stream region is again omitted). (b): the mock data set generated from an unstructured model, with the largest “group” marked. (c): a typical mock data set. The false group detections typically have many fewer objects than in the M87 data, and lack the clear, fairly symmetric shell-like morphology.

where the group-finding parameters are not optimized) has 30 members, and the largest group of all has 61 members. Examples of these groups are shown in panels (b) and (c) of Figure 5, alongside the real data in panel (a). We thus exclude finding a 68-member group by chance at the 99% level. This test is somewhat conservative in using the radial locations of the real GCs in the mock data sets, which may already have some clumpiness.

If we were to include the data from the outer stream region, a stream-like phase-space feature would indeed be picked up by the group-finding algorithm, but so would be 6 other small “substructures” that (based on the Monte Carlo simulations above) are probably not real. The outer stream is analyzed separately in a later section, using a slightly different algorithm because of the much smaller number counts and the importance of two-dimensional spatial clumping.

3.3. Entropy

The next test uses a very general entropy metric S that measures the clumpiness of data in a set of partitions:

$$S = - \sum_i N_i \ln N_i, \quad (5)$$

where N_i is the number of objects in each partition (Helmi et al. 1999). We consider the 4–20 arcmin region of interest and adopt a gridded partition of (radius by velocity) with size (2 arcmin \times 80 km s⁻¹). We measure S and compare it to 1000 mock data realizations using Gaussian velocity distributions. We find that this region is significantly substructured at the 1 σ level. This is a conservative test because again we have used radii from the real data, and because the rectangular partitioning is not optimized to pick up extended diagonal features as the data appear to show.

3.4. Maximum likelihood modeling

We next carry out a set of parametric model fits to the data in the shell region, which both allows us to evaluate the significance of the substructure and to quantify its properties. We will in general focus on the $R_m = 10.5$ –20 arcmin (50–95 kpc) region where the shell is most apparent by eye.

The basic idea is that given a model for the line-of-sight velocity distribution (LOSVD) dL/dv at a given measurement location R_i , we quantify the likelihood \mathcal{L} of a velocity measurement $v_i \pm \Delta v_i$:

$$\mathcal{L}(v_i, R_i) = \int_{-\infty}^{\infty} \frac{dL}{dv}(v, R_i) e^{-\frac{(v-v_i)^2}{2(\Delta v_i)^2}} dv \quad (6)$$

(Romanowsky & Kochanek 2001). The likelihood can be considered as equivalent to a χ^2 statistic after the operation $-2 \ln \mathcal{L}$. For a Gaussian model dL/dv with an intrinsic dispersion σ centered on a systemic velocity v_{sys} , the maximum likelihood model fitting involves minimizing the simple function:

$$-2 \ln \mathcal{L} = \frac{(v_i - v_{\text{sys}})^2}{\sigma^2 + (\Delta v_i)^2} + \ln [\sigma^2 + (\Delta v_i)^2] \quad (7)$$

(Nolthenius & Ford 1986; Bergond et al. 2006).

Before constructing detailed models of the system in phase-space, we consider the simplest possible models, lumping all of the shell-region velocity data together, with no spatial information. Using the likelihood formalism above, we fit a single Gaussian to these data and find a dispersion of 315 km s⁻¹. The implied LOSVD for this model is shown along with the data in Figure 6(a).

It is apparent that a single Gaussian is not a good representation of the data, so we next try a double-Gaussian model. We find a best fit where the hot component has a dispersion of 361 ± 34 km s⁻¹, and the cold component comprises a fraction $f_s = 0.25 \pm 0.12$ of the GCs, with a

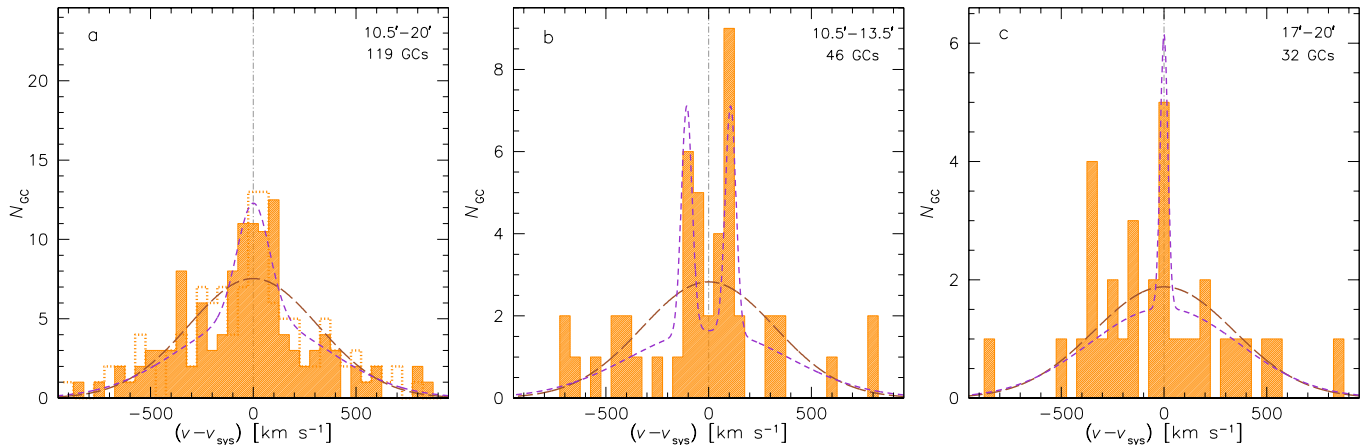


FIG. 6.— Line-of-sight velocity distribution of GCs in the shell region around M87 ($R_m=10.5\text{--}20$ arcmin). The systemic velocity of 1307 km s^{-1} has been subtracted from the data. The filled histograms show the data, while the long- and short-dashed curves illustrate single and double Gaussian model fits, respectively (with additional smoothing to account for measurement errors). The panels show different radial regions. (a): entire region. A mock data set is also shown as a dotted histogram. (b) and (c): finer radial bins as labeled. The shell-like substructure is clearly visible as an extra, low-dispersion component in the overall velocity distribution. At smaller radii, it appears as a symmetric double peak, and at larger radii as a narrow single peak.

dispersion of $86 \pm 34 \text{ km s}^{-1}$ (where Monte Carlo simulated data sets were used to estimate these uncertainties and to correct for slight fitting biases). We show a mock data set of this solution in Figure 6(a), to illustrate the level at which noise can influence the LOSVD.

By eye, the second Gaussian appears required for adequately fitting the data, and to quantify this statement we carry out a Monte Carlo analysis using a series of single-Gaussian mock data sets. We find that f_s values as high as 0.24 are fitted by chance in only 15 out of 1000 simulations, while most of these false second components are hot, with only 1 out of 1000 having a dispersion as low as $\sim 80 \text{ km s}^{-1}$. We conclude that there is definitely a secondary cold component, with a dispersion of 120 km s^{-1} at the most, comprising 13%–37% of the GC data. It is also important to note that this conclusion does not depend on the detailed morphology of the substructure, and is insensitive to the adopted radius convention (Section 3.1), since we have not used radius information except to define the overall radial bin, and the results are also very similar if we define this bin using the circular radius R_p .

Next, given the radial dependence of the shell that is visible by eye in Figure 3(b), we examine the LOSVD in two radial bins: one at the “mouth” of the substructure and one at the “apex” (Figure 6(a,b)). We again fit double-Gaussian models, allowing for a split around v_{sys} for the cold component. In the first bin, we find a dispersion of $23^{+15}_{-14} \text{ km s}^{-1}$ with $f_s = 0.30^{+0.13}_{-0.12}$ and a peak separation of $214 \pm 22 \text{ km s}^{-1}$. In the second, we find $f_s = 0.12^{+0.10}_{-0.07}$, and a dispersion consistent with zero with a 68% upper limit of 20 km s^{-1} .

These binned results together suggest a cold substructure with $f_s \sim 0.2$ and a dispersion of $\sim 15 \text{ km s}^{-1}$. The latter result is similar to our rms velocity measurement errors, which can be challenging to determine accurately, and consequently a dispersion anywhere in the range $0\text{--}35 \text{ km s}^{-1}$ is plausible.

We now model all of the shell-region data jointly in phase space. Each model consists of a fraction f_s of substructure, and a Gaussian component with fraction $(1 - f_s)$ and dispersion σ_1 . The substructure LOSVD is

parametrized in one of three ways: as a single Gaussian, a nested double Gaussian, or a step function. These models are all combined with a linear trend of LOSVD width with radius, producing a tapered Gaussian, a chevron, or a filled wedge, respectively. The characteristic width vs. radius is:

$$v_w = v_{\text{sys}} \pm v' \times (R - R_x), \quad (8)$$

where v' is the slope and R_x is the apex radius. The systemic velocity is set as a fixed parameter $v_{\text{sys}} = 1307 \text{ km s}^{-1}$.

We fit the various model alternatives to the shell region and find $f_s \sim 0.22, 0.23,$ and 0.26 for the tapered-Gaussian, chevron, and wedge models, respectively. Examples of mock data generated from the best model fits are shown in Figure 7. By eye, the real data suggest a feature that is intermediate between the different models, but most closely related to the chevron, owing to the strong “edge” seen in the substructure. More quantitatively, Monte Carlo modeling of likelihood fits is unfortunately not very informative about which model is the best representation of the substructure. We find that any of the alternative models can readily fit mock data based on the other models.

Instead we turn to a somewhat less parametric representation of the data, using simply a diagonal model (with a characteristic slope $v' = 17.3 \text{ km s}^{-1} \text{ arcmin}^{-1}$) to project each data point to a velocity at a radius of $R_m = 10$ arcmin. This exercise allows us to collapse all of the position-velocity phase-space data into single one-dimensional LOSVDs analogous to Figure 6, comparing real data to simple models.

The results are shown in Figure 8, where a 30 km s^{-1} Gaussian smoothing kernel has been applied in order to capture the shape of the distribution while reducing Poisson noise. Given an apex in all cases of $R_x \simeq 19$ arcmin, the model projects to characteristic velocities of $v_{\text{mod}} \sim 160 \text{ km s}^{-1}$ (relative to v_{sys}) at 10 arcmin. Applying the projection to mock data, two peaks are always generated but other properties are more model dependent: the peak widths, locations relative to v_{mod} , and dips in between. In particular, a chevron model when added to a Gaussian produces the most distinct, narrow

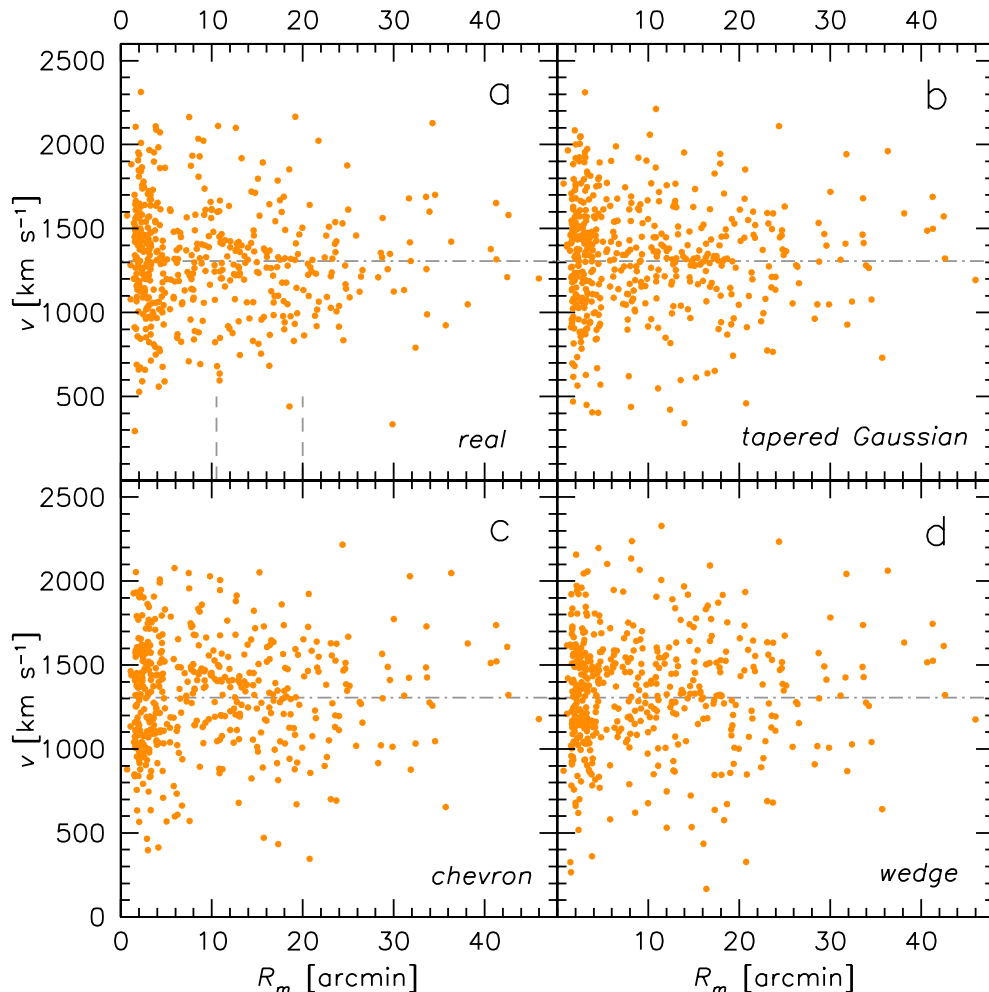


FIG. 7.— Simple models for GC substructure in phase-space. (a): the real data. Vertical dashed lines show the radial range where the models are fitted. (b): mock data set using a tapered double-Gaussian model. (c): mock data set using a Gaussian+chevron model. (d): mock data set using a Gaussian+wedge model. Some single-Gaussian models can also be seen in Figure 5(b,c) for comparison. The real data appear to have a phase-space morphology intermediate to these various two-component models, but closest to the chevron-based model.

peaks close to v_{mod} .

We find by inspection of Figure 8 that the real data most closely resemble the chevron-based model, with narrow, well-defined peaks near v_{mod} . This plot also indicates a two-sided rather than one-sided chevron (see also Figure 6). There is furthermore an additional narrow feature near -400 km s $^{-1}$ that appears stronger than a random fluctuation and suggests the presence of another sharp edge in phase-space terminating at $R_m \sim 30$ arcmin (see also Figures 3(b) and 6), i.e., perhaps tracing a second, fainter shell.

Although our overall conclusion from LOSVD analyses is that a chevron is the best representation for the shell, it is difficult to be certain given the available data and the uncertainties in the coordinate transformations to R_m . The real shell probably has a morphology somewhat intermediate between the idealized models studied here, and also shows hints of being asymmetric with respect to v_{sys} . For now, we report the best-fit parameters for the favored chevron model, with uncertainties based on Monte Carlo simulations: $f_s = 0.23 \pm 0.06$, $\sigma_1 = 19 \pm 10$ km s $^{-1}$, $v' = 15.2 \pm 1.5$ km s $^{-1}$ arcmin $^{-1}$, $\sigma_2 = 358 \pm 27$ km s $^{-1}$. Of the 119 confirmed GCs in the $R_m = 50$ –95 kpc region, we thus estimate that 21–35 of them are in

the shell. We highlight the 27 most likely shell members based on this chevron model in Figure 1(b).

Note that the quoted error bars on these fit parameters are the statistical uncertainties for an assumed simple chevron model. The systematic uncertainties from considering alternative models, and from allowing for different radius conventions (Section 3.1), are difficult to quantify. Above we reported also a maximal-ignorance model that disregards any spatial tapering of the substructure by fitting a simple double-Gaussian, and returns a very conservative upper limit of 120 km s $^{-1}$ on the dispersion.

3.5. Color and metallicity distributions

One great advantage of using GCs as phase-space tracers is that they provide additional measurable properties beyond position and velocity. Because each GC is to a good approximation comprised of a homogeneous stellar population with a single age and metallicity, the principles of stellar-subpopulation tagging used in the Milky Way (Helmi 2008) can be extended to more distant systems. In particular, GCs are now known to be generally very old objects (ages of ~ 10 Gyr), both in M87 (Cohen et al. 1998) and in other galaxies (Brodie & Strader 2006). Therefore their optical colors are dominated by metallicity variations rather than by ages, and we can

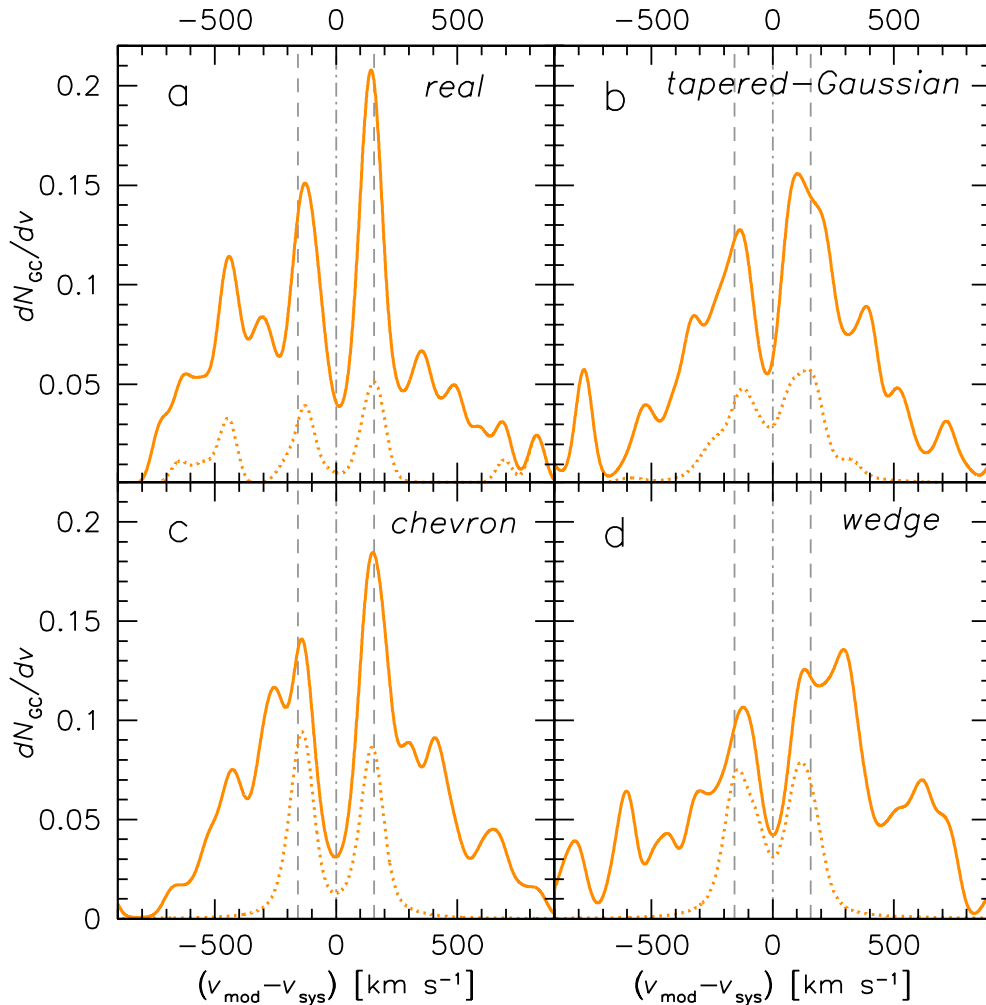


FIG. 8.— GC line-of-sight velocity distributions, after projection with a diagonal velocity model (see main text), smoothed by 30 km s^{-1} . The solid curves show the overall distribution in each panel, with sample subpopulations shown as dotted curves. The vertical dashed lines show $\pm 160 \text{ km s}^{-1}$ model reference points. (a): real data around M87 from the $R_m = 10.5\text{--}20$ arcmin region, with the intermediate-color subpopulation also shown as a dotted curve. (b): mock data set comprised of a wide Gaussian and a second narrow Gaussian with a tapered radial dependence (which is shown as the dotted curve). (c): Gaussian+chevron mock data set, with the chevron subsample also shown. (d): Gaussian+wedge mock data set, with the wedge subsample also shown. Only the chevron-based data set has a sharp double-peaked velocity distribution as in the real data, after projecting with the diagonal model.

use *color* as a good *metallicity proxy*.

Rather than solely relying on literature findings on this point, we consider the color-metallicity link in our own data set. From the DEIMOS spectra, there are 47 objects with high enough S/N to estimate iron-based metallicities $[\text{Fe}/\text{H}]$ via the CaT line strengths, using techniques that we have developed earlier with the same instrumental set-up (Foster et al. 2010, 2011). Approximate line-strength uncertainties are estimated from the spectroscopic signal-to-noise ratio, after calibration from Monte Carlo simulated observations of model spectra.

We provide these metallicity estimates in Table 2, and in Figure 9(a) plot them vs. dereddened colors for the same GCs where $(g - i)_0$ data are available. We find a strong correlation between metallicity and color that agrees roughly with model predictions (Vazdekis et al. 2003). Understanding the scatter in the data will require more detailed investigation.

TABLE 2
CAT MEASUREMENTS OF M87 GLOBULAR CLUSTERS

ID	R.A. [J2000]	Decl. [J2000]	i_0	$(g - i)_0$	CaT [Å]
S731	187.72452	12.28682	20.37	0.858 ± 0.004	7.05 ± 0.31
S878	187.70708	12.28149	20.62	0.816 ± 0.004	7.89 ± 0.53
S952	187.69952	12.27727	20.58	0.779 ± 0.004	4.78 ± 0.48
S1007	187.69344	12.28971	19.41	1.023 ± 0.002	6.94 ± 0.13
S1074	187.68856	12.27776	20.29	1.120 ± 0.004	5.89 ± 0.30
S1265	187.67009	12.28303	19.82	0.772 ± 0.003	5.23 ± 0.20
H20493	187.87314	12.15391	20.13	0.785 ± 0.005	7.24 ± 0.42
H21863	187.87253	12.17069	20.54	0.977 ± 0.006	8.25 ± 0.42
H25785	187.86159	12.21268	19.88	0.914 ± 0.002	1.95 ± 0.22
H26690	187.72956	12.22270	19.70	0.990 ± 0.002	7.56 ± 0.16
H27496	187.80753	12.23123	19.56	0.801 ± 0.002	5.31 ± 0.13
H27916	187.71521	12.23610	20.45	0.756 ± 0.004	5.46 ± 0.37
H28411	187.70221	12.24179	20.10	0.799 ± 0.002	5.64 ± 0.26
H28415	187.78343	12.24165	19.71	0.925 ± 0.002	7.80 ± 0.16
H28866	187.75563	12.24666	19.96	0.994 ± 0.004	6.13 ± 0.20
H30757	187.71996	12.26691	20.20	0.809 ± 0.002	6.04 ± 0.28
H30772	187.74191	12.26728	19.84	0.906 ± 0.033	3.61 ± 0.31
H31134	187.72735	12.27091	20.04	0.821 ± 0.003	8.22 ± 0.23
T13456	187.92093	12.46766	21.14	0.757 ± 0.008	5.06 ± 0.15
T13500	187.93052	12.42406	20.55	0.767 ± 0.004	3.49 ± 0.26
T13559	187.93331	12.37800	21.87	0.904 ± 0.012	6.47 ± 0.33
T13569	187.98853	12.36469	21.93	0.695 ± 0.015	3.77 ± 0.25

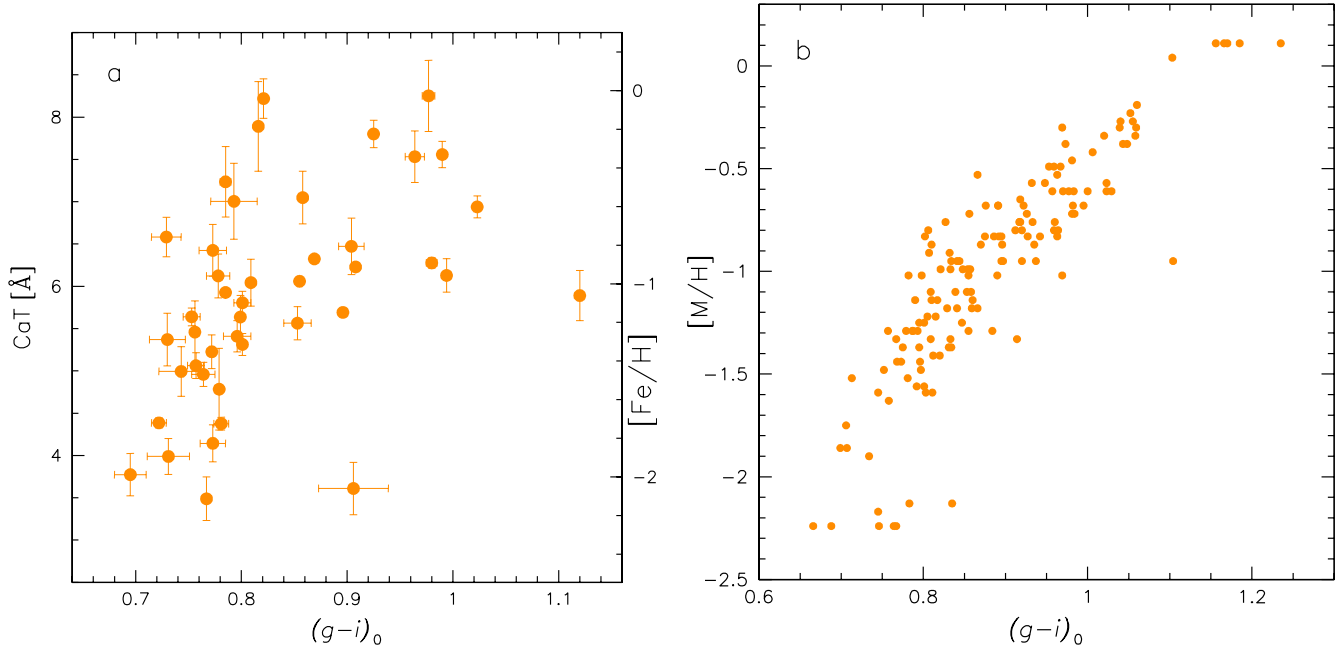


FIG. 9.— Color vs. metallicity for M87 GCs. (a): results from CaT analysis of the subset of our DEIMOS spectra with good enough signal-to-noise ($S/N \gtrsim 12$) and with $(g-i)_0$ data available (44 objects). The left axis shows the direct CaT line strengths, where the error bars indicate 68% uncertainties. The right axis shows the equivalent iron metallicity. The color uncertainties in some cases are smaller than the point sizes. One additional outlier is off the scale at $(g-i)_0 = 0.91$, $\text{CaT} = 1.9$ Å. (b): color versus metallicity for 148 GCs from earlier spectroscopic analysis (Cohen et al. 1998). Note that while in this case the line-index metallicity conversions below $[\text{M}/\text{H}] \sim -1.8$ may well be non-linear, and above $[\text{M}/\text{H}] \sim 0$ the metallicities are not well calibrated, the important issue here is not the exact metallicities but rather the monotonicity of the color-metallicity relation, which is demonstrated by both data sets.

TABLE 2 — *Continued*

ID	R.A. [J2000]	Decl. [J2000]	i_0	$(g-i)_0$	CaT [Å]
T13571	187.89063	12.36288	21.42	0.801 ± 0.008	5.81 ± 0.14
T13589	187.92350	12.35406	21.71	0.773 ± 0.012	4.14 ± 0.22
T13593	187.90345	12.35247	21.81	0.778 ± 0.011	6.12 ± 0.26
T13609	187.96307	12.34319	21.95	0.729 ± 0.014	6.58 ± 0.23
T13611	187.92010	12.34146	22.44	0.793 ± 0.022	7.00 ± 0.45
T13623	187.90570	12.33556	21.49	0.764 ± 0.011	4.96 ± 0.14
T13642	187.94181	12.32521	20.39	0.869 ± 0.004	6.32 ± 0.02
T13648	187.98298	12.32301	21.79	0.731 ± 0.020	3.99 ± 0.21
T13899	187.84033	12.42620	22.38	0.964 ± 0.009	7.53 ± 0.31
T13901	187.87673	12.42616	21.83	0.853 ± 0.013	5.56 ± 0.20
T14060	187.87089	12.38884	20.83	0.722 ± 0.007	4.39 ± 0.06
T14108	187.83846	12.37504	19.82	0.908 ± 0.002	6.23 ± 0.01
T14133	187.84645	12.37052	20.69	0.980 ± 0.005	6.28 ± 0.06
T14149	187.87374	12.36463	21.84	0.773 ± 0.013	6.42 ± 0.31
T14228	187.84434	12.35020	20.44	0.785 ± 0.004	5.93 ± 0.03
T15685	188.04605	12.36726	22.08	0.730 ± 0.017	5.37 ± 0.31
T15777	188.14226	12.45638	21.93	0.796 ± 0.013	5.41 ± 0.19
T15863	188.17885	12.36688	21.36	0.753 ± 0.008	5.64 ± 0.11
T15886	188.15205	12.34920	22.33	0.743 ± 0.021	4.99 ± 0.29
T15900	188.21484	12.33844	20.6	...	4.20 ± 0.06
T15908	188.15419	12.33126	21.19	0.781 ± 0.007	4.38 ± 0.08
T16080	188.27954	12.34479	21.0	...	6.21 ± 0.07
T17211	188.33727	12.48077	21.0	...	5.08 ± 0.08
VUCD6	187.86816	12.41766	18.63	0.896 ± 0.001	5.69 ± 0.01
VUCD8	188.01813	12.34176	18.96	0.855 ± 0.001	6.06 ± 0.01

NOTE. — Note that the $(g-i)_0$ color uncertainties are based on shot-noise only, and are useful for relative comparisons of colors in this dataset. The absolute uncertainties from calibration, reddening correction, background estimation, etc., will be larger. The equivalent iron metallicities shown on the right-hand axis of Figure 9(a) are derived using the expression: $[\text{Fe}/\text{H}] \simeq 0.438 \times \text{CaT} - 3.641$.

This test does not prove unequivocally that these colors are a perfect proxy for metallicity, given various unresolved issues about CaT-based metallicities, and the possibility of some residual age effects on the colors. How-

ever, it does provide assurance that the current conventional wisdom about GC color as a reliable metallicity proxy is probably sound in the halo of M87 (i.e., at radii of ~ 45 –220 kpc).

Previous spectroscopic work using bluer wavelengths at smaller radii (~ 3 –40 kpc) also found M87 GC metallicity indices to correlate strongly with $U-R$ color, and for the ages to be almost all larger than 10 Gyr (Cohen et al. 1998). We revisit these data by comparing our $(g-i)_0$ colors to these authors’ metallicity estimates in Figure 9(b), finding a tight correlation between the two quantities. Again, this supports the color-metallicity link.

Despite these arguments that color is a good proxy for metallicity in our data set, it is important to note that our analysis below is independent of this link. Whatever the root cause of variations in color, we can still use it as an empirical tagging factor. Then for our current purposes the issue is more a matter of semantics: whether we are analyzing chemo-dynamics or chromo-dynamics.

Our first basic goal is to use color as a completely independent dimension in the data, to see if it supports the differences among GCs that emerged from the position-velocity phase-space analyses. We plot velocity versus color in the shell region in Figure 10(a). In M87, as in galaxies in general, the population of metal-poor GCs has a more extended distribution from their host galaxy’s center than the more metal-rich GCs. Given that all of these objects reside in the same gravitational potential, and assuming that they have similar orbital anisotropies, their spatial differences are expected to be related to their velocity dispersions. The metal-rich GCs should generally have lower dispersions, and Figure 10(a) is expected to show a systematic decrease in dispersion with color, with perhaps a strong transition between the two main

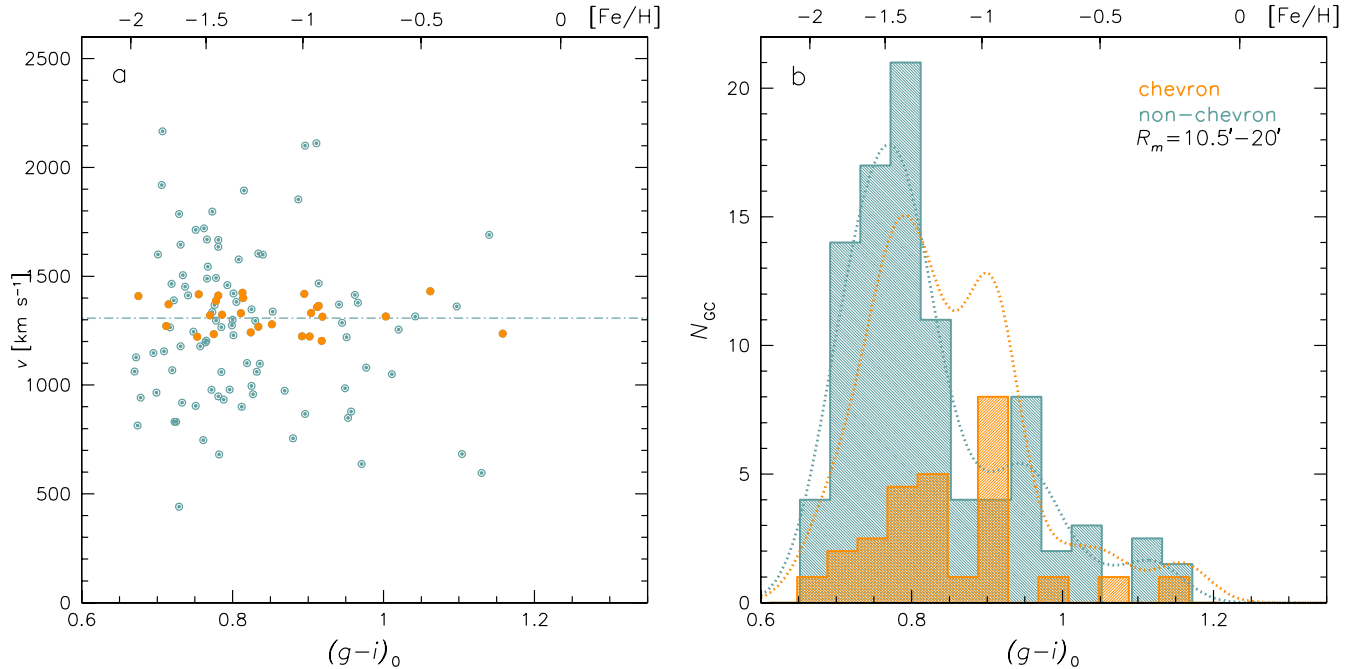


FIG. 10.— Correlations between phase space and color properties of M87 GCs in the $R_m = 10.5\text{--}20$ arcmin shell region. (a): line-of-sight velocity versus color. A “cold” velocity component appears at colors redder than $(g-i)_0 \sim 0.77$. GCs assigned to the chevron are marked as filled orange circles. (b): the chevron and non-chevron subsamples (with 27 and 92 objects, respectively). Histograms show the raw counts in color bins of 0.04-mag width. Alternative, unbinned color distributions are shown by the dotted curves, which are produced by smoothing the discrete data with a 0.036-mag optimum Gaussian kernel (a standard technique in studies of GC color distributions; Peng et al. 2006). The amplitude of the smoothed chevron distribution has been rescaled to the same integrated number as the non-chevron. The chevron GCs appear to have a slightly redder “blue peak” than the non-chevron GCs, as well as a strong intermediate-color peak.

subpopulations, at $(g-i)_0 \sim 0.9$.

Figure 10(a) does show a kinematic transition with color, but not in the way just described. There is an overall pattern of a cold component near v_{sys} embedded in a hotter component (cf. Figure 6), but the cold component does not appear bluewards of $(g-i)_0 \sim 0.77$. This color is in the middle of the main blue peak for M87’s GC system, and implies that there is kinematic substructure within this peak.⁶ We have looked at the same information using the CaT-based metallicities, with consistent results (colder material at CaT $\gtrsim 5.3$ Å or $[\text{Fe}/\text{H}] \gtrsim -1.3$ dex), but the statistics are too poor to be conclusive (17 GCs in the shell region).

We next take a different approach, of separating GCs into probable shell and non-shell objects, based on the phase-space maximum likelihood models constructed previously. We then examine the color distributions of the two subsamples. For each of the models (tapered Gaussian, chevron, wedge), the two color distributions are different, with the chevron case shown in Figure 10(b) as an example.⁷ Here the shell appears to contain an excess population of intermediate-color GCs, peaking at $(g-i)_0 \sim 0.90$.

Motivated by this result, we also show the velocity distribution of all the intermediate color objects in the shell region, with $(g-i)_0 = 0.85\text{--}0.95$, in Figure 8(a). These objects do show a double-peaked profile as expected in the chevron model, except for an additional low-velocity peak that accounts for much of the candidate outer shell. We have also fitted the chevron model to the phase-space

data for the blue, intermediate-color, and red GCs separately. The resulting parameters for each of these fits are mutually consistent, and color does not discriminate sharply between shell and non-shell objects, but we do find that the shell fraction is highest in the intermediate-color population, with $f_s \sim 0.5$.

We evaluate the statistical significance of the differences between the chevron and non-chevron color distributions using a Kolmogorov-Smirnov test. We find a D value of 0.25, with a 13% probability of occurrence by chance. According to the test, the largest difference between the distributions comes at the far blue end, supporting the transition seen in Figure 10(a). The same is true for all three shell models, with the far-blue difference being strongest for the tapered-Gaussian case, and the intermediate-color peak for the chevron case. The similarity of the three models also suggests that these conclusions are insensitive to the choice for radius R_m , as is also explicitly the case for the test in Figure 10(a).

We have found that metallicity information (primarily using color as a proxy) provides independent support for the presence of the M87 shell. The colors do not yet differentiate clearly between the alternative phase-space models for the shell, but even our unprecedented data set only scratches the surface of what can now be accomplished. It is technically feasible to increase the number of measured GC velocities by an order of magnitude, e.g., to ~ 1500 objects in the shell region alone.

3.6. Progenitor inferences from GCs

Having established the existence of the shell, and some of its properties, we now attempt to identify the nature of its progenitor, assuming that the accretion and disruption of a single galaxy was responsible. Unfortunately,

⁶ This is again a test that is insensitive to the radius transformation R_m .

⁷ Among our probable shell sample, there are two ultra-compact dwarf candidates: VUCD1 and H59823.

we will see that it is difficult to derive a self-consistent solution from the basic shell parameters, so we will carry out an inventory of different types of constraints to see if an overall solution emerges (with an estimate of the progenitor’s V -band stellar luminosity, L_V , as a basic goal).

Since in the previous Section we have just discussed the color distribution of the shell GCs, it is natural to try using these colors to constrain the progenitor L_V . Empirically, GC colors correlate with host galaxy luminosity (e.g., Larsen et al. 2001; Strader et al. 2004; Lotz et al. 2004), which is conceptually related to the correlations between substructure metallicities and their progenitor masses (e.g., Johnston et al. 2008). This framework was used to estimate the relative masses of accreted galaxies in the halo of a nearby S0 in Arnold et al. (2011).

In the case of M87, we can make use of the correlations found from the “ACSVCS” large survey of elliptical and lenticular galaxies, both giant and dwarf, in the Virgo cluster (Peng et al. 2006). Although the GC color distributions in these galaxies are in general complex, they show a general tendency for *bimodality*, with distinct blue and red peaks. The color-luminosity relation is therefore reported separately for the blue and red GCs. The underlying basis for these correlations is thought to be a mass-metallicity relation, but again, our analysis does not rely on this conclusion.

We have modeled the color distributions of the chevron and non-chevron GCs (Figure 10(b)) using Kaye’s Mixture Models based on heteroscedastic Gaussian color subpopulations (Ashman et al. 1994). We find marginal significance ($p = 0.325$) for bimodality among the chevron GCs, and high significance ($p < 0.001$) for the non-chevron GCs. Beginning with the *non-chevron* GCs, we find that they have a primary peak at $(g - i)_0 \sim 0.77$ and a possible weak secondary peak at $(g - i)_0 \sim 0.94$, which correspond to $(g - z)_0 \sim 0.92$ and ~ 1.17 , or $[\text{Fe}/\text{H}] \sim -1.5$ and -0.8 , respectively (where we have made empirical color conversions using a large set of M87 GCs that overlap between ACS and CFHT imaging).

We next assume for simplicity that the GC color peaks in the surviving Virgo early-type galaxies are representative of the disrupted progenitors that built up the M87 halo.⁸ Considering first the peak locations of the non-chevron GCs and comparing them to the non-parametric peaks determined for the ACSVCS galaxies (Peng et al. 2006), we find the former to be fairly atypical when considered jointly (a puzzle that would be worsened if the chevron GCs were included). This makes the progenitor inference unclear, perhaps owing to the superposition of color peaks from multiple progenitors, but our best guess would be a typical progenitor magnitude of $M_V \sim -18$ [$\log(L_V/L_{V,\odot}) \sim 9.5$].

Approximating the V -band stellar mass-to-light ratios as roughly constant, the implication would be that the accretion events which built up the bulk of the M87 halo had characteristic stellar-mass merger ratios of $\sim 1:30$. This may be consistent with current ideas of massive galaxies’ stellar envelopes being assembled through mi-

nor mergers (e.g., Oser et al. 2012).

Turning now to the *chevron* GCs, they have a primary peak at $(g - i)_0 \sim 0.79$ and a secondary peak at $(g - i)_0 \sim 0.90$, corresponding to $(g - z)_0 \sim 0.95$ and ~ 1.11 , $[\text{Fe}/\text{H}] \sim -1.4$ and -1.0 . This red peak location is very atypical for the ACSVCS sample, and may have been inaccurately estimated through our procedure of statistically disentangling the chevron and non-chevron GCs. We therefore consider the color constraint on the shell progenitor luminosity to be indeterminate.

The other two major clues about the shell origin are its *number* of GCs, N_{GC} , and their mutual *velocity dispersion*, σ_{GC} . For both of these properties, we use the results of maximum likelihood models from Section 3.4. While our default constraint comes from the “chevron” model, we will also account for the systematic uncertainty in the shell morphology (e.g., owing to the radius conventions discussed in Section 3.1) by considering an alternative scenario of maximal ignorance of the morphology. For this case we adopt the double-Gaussian analysis of Section 3.4, which leads to a much larger value of σ_{GC} (50–120 km s⁻¹ rather than 10–30 km s⁻¹).

To make use of the N_{GC} and σ_{GC} constraints, we must correct both observational measurements to the relevant quantities for the progenitor galaxies. In the case of N_{GC} , we extrapolate the fraction of shell GCs in our spectroscopic sample to the much larger sample of unobserved GCs in the same region. We have constructed a smooth model surface density profile of the M87 GC system, based on both the CFHT photometric data as well as spectroscopic data to confirm the non-GC contamination rate (see S+11). This model is initially based on our photometric limit of $i = 22.5$ ($z \simeq 22.4$), but to get total GC numbers we need to extrapolate to fainter luminosities, using an evolved Schechter function fitted to the central GCs of M87 (Jordán et al. 2007). This provides a scaling factor of 2.76.⁹

Now integrating the revised surface density between 10 and 20 arcmin where the shell signal is clear, we find a total of 3500 ± 400 GCs. Multiplying by the inferred f_s values for both the chevron and double-Gaussian models (see Section 3.4), we estimate $N_{\text{GC}} = 800^{+320}_{-270}$ and 870^{+560}_{-460} total GCs in the shell, respectively (integrating over all magnitudes). These numbers could be lower if we have detected a disproportionate fraction of the shell objects by spatial bias in our spectroscopic selection that coincides with a spatial clumping of the shell; or higher if the shell extends farther in radius and velocity than in our simple model (see, e.g., Figure 2(b)). It is difficult to quantify such uncertainties, but we suspect that they could involve an additional factor of ~ 2 , which would accommodate a range of up to ~ 200 –2900 GCs. If $N_{\text{GC}} \sim 800$, then the shell accounts for $\sim 20\%$ of the GCs around M87 within the 50–100 kpc range, and $\sim 5\%$ of the total GC system.¹⁰

⁹ With a Gaussian luminosity function, this factor would be 2.50, but for direct comparison with N_{GC} values from the ACSVCS, we adopt 2.76.

¹⁰ To derive the latter value, we have integrated the GC spatial density profile out to a radius of 45 arcmin (220 kpc), which is where the planetary nebula (PN) kinematics suggest a transition between objects bound and not bound to M87 (Doherty et al. 2009; the kinematics data for the GCs themselves are less extensive at large radii and do not yet show any sign of such a transition). The

⁸ There is evidence that galaxies accreted during earlier epochs had systematically redder GC colors at a fixed mass (Brodie & Strader 2006), which would mean that our luminosities for the typical M87 halo progenitors will be overestimated.

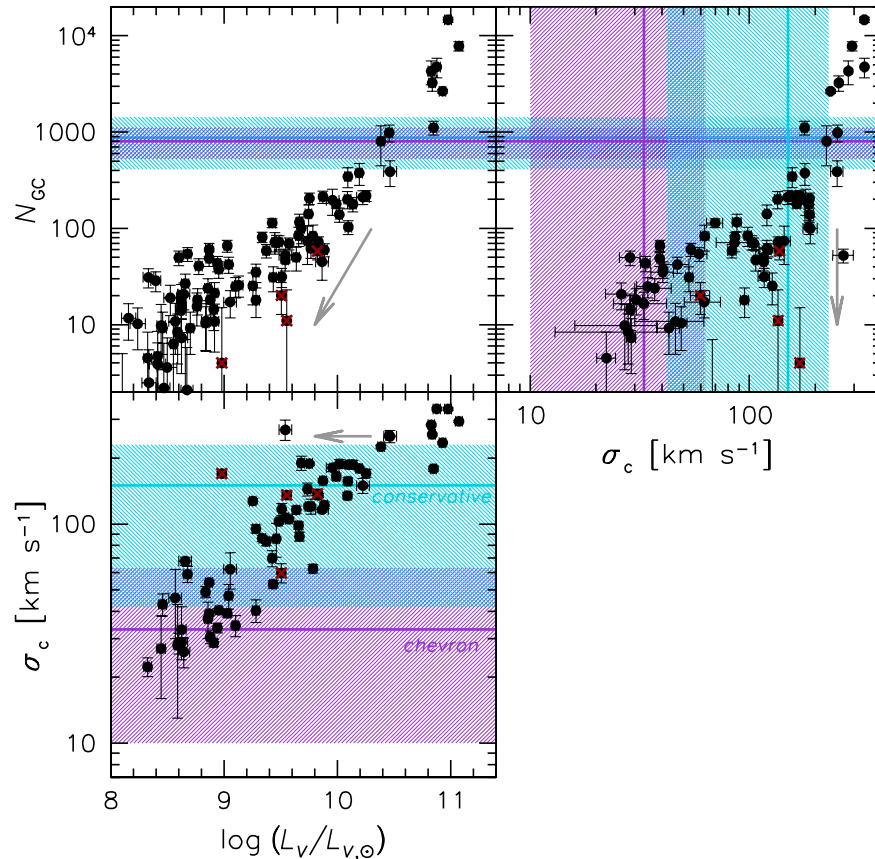


FIG. 11.— Parameter-space of candidate progenitor galaxies for the M87 shell, plotting V -band luminosity, central stellar velocity dispersion, and GC numbers. The bands show constraints from modeling the shell GCs, with the narrower purple bands stemming from our default chevron-based analysis, and the wider blue bands showing a model that does not incorporate spatial information (yielding a conservative upper limit on the dispersion). The points with error bars show early-type galaxies in Virgo from the ACSVCS survey, with N_{GC} and L_V from Peng et al. (2008). The dispersions are mostly from HyperCat with some additions from Chilingarian (2009) and Toloba et al. (2011). Points with red \times symbols superimposed show four low-luminosity ellipticals near to M87, whose positions in these diagrams are suggestive of histories of stripping—as illustrated schematically by the gray arrows. The constraints from the chevron model do not match up well with any realistic candidate progenitor galaxies, while the conservative model is more viable (see text for details).

What kinds of galaxies are observed so many GCs? To provide a visual overview of this constraint, we plot the number of GCs versus host luminosity for the ACSVCS sample in the upper left panel of Figure 11, finding that $\sim L^*$ luminosities of $\log(L_V/L_{V,\odot}) \sim 10.1$ – 10.8 are implied.

Next we consider the shell’s internal velocity dispersion, which as a first approximation, we assume to be similar to the internal velocity dispersion of its progenitor, as might be expected under the simplest tidal stripping models. Here the comparison to the ACSVCS galaxies is less straightforward, since very few of these have direct measurements available of their GC velocity dispersions. Instead, we will adopt a conversion between σ_{GC} and the widely-available central stellar velocity dispersion σ_c . Based on the forthcoming kinematical analysis of a handful of low-luminosity E/SOs (Pota et al., in preparation), we find that the ratio σ_c/σ_{GC} varies from galaxy to galaxy over a range ~ 1.3 – 2.3 , with a typical value of ~ 1.8 . We therefore infer $\sigma_c \sim 35 \pm 25 \text{ km s}^{-1}$ and $\sim 150 \pm 100 \text{ km s}^{-1}$ based on the chevron and double-Gaussian models, respectively.

We plot this constraint again versus the ACSVCS sample in the bottom left panel of Figure 11. Here we see that the chevron-based velocity dispersion suggests a dwarf total GC population is then ~ 16200 .

E/S0 with $\log(L_V/L_{V,\odot}) \lesssim 9.5$,¹¹ while the conservative upper-limit dispersion allows for luminosities of up to $\log(L_V/L_{V,\odot}) \sim 10.6$.

For the chevron model, the dispersion constraints on luminosity are thus inconsistent with the constraints from GC numbers. To make this comparison more directly, we show dispersion versus GC numbers in the upper right panel of Figure 11. The intersections of the vertical and horizontal bands mark out possible solutions for the progenitor based on the shell analyses—but these do not overlap with the properties of known Virgo galaxies. *It does not seem plausible that either a dwarf galaxy hosted hundreds of GCs, or that an $\sim L^*$ galaxy left extensive debris with a velocity dispersion of $\lesssim 30 \text{ km s}^{-1}$.*

The conservative model fares much better in this respect, as several ACSVCS galaxies are consistent

¹¹ An alternative mechanism for producing a low velocity dispersion is through tidal tails stripped out from the cold disk of an infalling spiral galaxy (e.g., Hernquist & Spergel 1992; Hibbard & Mihos 1995). However, we do not know of any galaxy with hundreds of GCs contained in a cold disk. Alternatively, some GCs could have been *formed* from cold gas in such a merger, and then deposited on closely associated orbits. Because of the age-metallicity degeneracy, the shell GCs might in principle be young and metal-rich rather than old and metal-poor. Full analysis of the GC ages is beyond the scope of this paper, but our initial inspection of the Hectospec data indicates there are no objects as young as $\sim 1 \text{ Gyr}$.

with both its N_{GC} and σ_{GC} constraints. Some examples include NGC 4435 and NGC 4473, with $\log(L_V/L_{V,\odot}) \sim 10.1$ – 10.2 . This model seems promising, but one should remember that is intended to representing a bracketing case of maximal ignorance about the shell morphology, while there does seem to be some degree of substructure tapering with radius in phase-space, independently of the radius convention. Therefore it is worthwhile reviewing any additional lines of evidence about the accretion progenitor.

If the progenitor were very massive, then it should have left other clear signatures of its passing, besides the phase-space shell. One might expect to see obvious disturbances and asymmetries in the light distribution of M87, as well as strong merger-induced halo rotation, which is not observed (S+11). If we assume that this rules out a mass ratio of $\sim 1:3$ or higher, it implies $\log(L_V/L_{V,\odot}) \lesssim 10.4$ for the progenitor, or perhaps somewhat higher if dark matter is taken into account.

Besides the impact of the accretion event on M87, the incoming galaxy should have deposited not only GCs but field stars, which would leave a large-scale surface brightness fluctuation across the face of M87. In the shell region where the typical surface brightness is $\mu_V \sim 27$ mag arcsec $^{-2}$, we can rule out obvious fluctuations at the ~ 0.5 mag arcsec $^{-2}$ level (see Figure 1(a) and Janowiecki et al. 2010). We can therefore rule out $\log(L_V/L_{V,\odot}) \gtrsim 9.8$ of accreted stars that are distributed uniformly over the shell region.¹²

This luminosity limit is lower if the stars are confined to only one side of M87, as Figure 1(a) suggests; and higher if the stars have become spatially decoupled from the GCs and reside at smaller radii where they are either hard to detect, or are still intact as one of the nearby low-luminosity elliptical galaxies. Such spatial segregation is plausible at some level since the GCs would be expected to inhabit preferentially the outer parts of the incoming galaxy, and thus be stripped off before the stars. Note that a fluctuation in the surface density of the GCs themselves would be challenging to detect at the $\sim 50\%$ level.

As mentioned previously, there are no major signatures of interactions previously known for M87. Some candidates for large-scale, low-surface brightness stellar features have been identified (Arp & Bertola 1971; Weil, Bland-Hawthorn, & Malin 1997; Rudick et al. 2010), but these are at spatially disparate locations from the GC shell, and in some cases are likely to be manifestations of foreground cirrus.

More intriguingly, as mentioned above, there are five low-luminosity ellipticals within a 30–80 kpc projected radius of M87: NGC 4476, NGC 4478, NGC 4486A, NGC 4486B, and IC 3443 (see Figures 1 and 12). Some of these have previously been proposed as the stripped remnants of larger galaxies, based on disturbances in their isophotes or unusual stellar colors for their luminosities. If any of these galaxies is being actively disrupted, some stars and GCs could have already been stripped out and

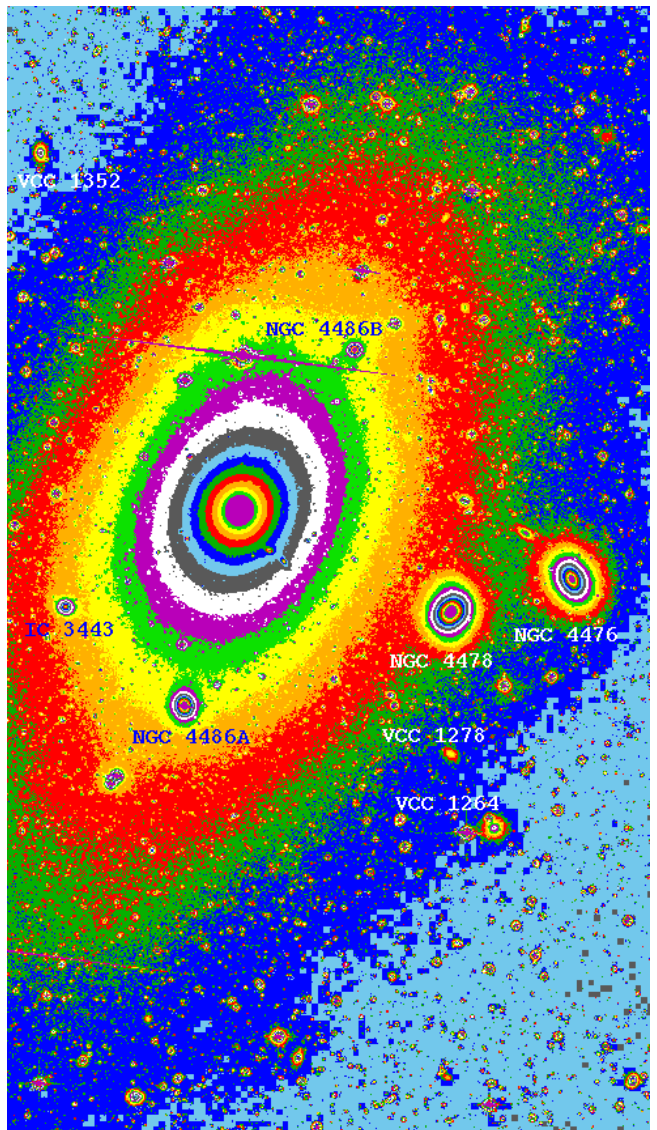


FIG. 12.— Closer view of the M87 V-band image from Figure 1(a), showing a $23.5' \times 40'$ (110×190 kpc) region. Some small galaxies in the field are labeled. The shading is logarithmically spaced by surface brightness, and arbitrarily colored in order to enhance any isophote twisting (e.g., in the case of NGC 4478). The most probable shell GCs have positions spread along the outermost, dark-green and dark-blue isophotes, and preferentially in the northern half of the galaxy.

¹² This constraint is relevant not only to our default single-progenitor scenario, but also to a scenario involving multiple small galaxies that together deposited a large number of GCs with cold kinematics: e.g., from ~ 5 dwarf E/S0s with $\log(L_V/L_{V,\odot}) \sim 9.3$ each. Besides the low probability of accreting such galaxies on near-identical trajectories, the associated stellar debris could violate the surface brightnesses constraint.

deposited within the halo of M87.

The first four of these galaxies are in the ACSVCS sample, so we consider this scenario in more concrete terms by marking them in Figure 11 with red \times symbols. Here we see from the top two panels that all four galaxies appear depleted in GCs relative to the average trend, which suggests stripping of their outer regions. The offsets are strongest for NGC 4486A and NGC 4486B, which are statistically consistent with hosting *zero* GCs (see further discussion in Peng et al. 2008). NGC 4486B is also a very unusual outlier in the σ_c - L_V panel, and possibly in supermassive black hole correlations (Gültekin et al. 2009), implying that not only its GCs but also $\sim 90\%$ of its stars have been stripped away.

The σ_c values of NGC 4486A and NGC 4486B suggest that they originally hosted ~ 70 – 200 and ~ 100 – 500 GCs, respectively. Their phase-space positions in Figure 1(b), where their velocities are ~ 750 km s $^{-1}$ and ~ 1550 km s $^{-1}$, respectively, indicate that NGC 4486B could be associated with the shell. NGC 4478 (at ~ 1400 km s $^{-1}$) is also consistent with the shell in phase-space; it does not appear to be as severely stripped, but still could have lost up to ~ 250 GCs.

The colors of the NGC 4478 GCs also provide one of the closer matches to the shell GC colors (this test is not possible for NGC 4486A and NGC 4486B since they have virtually no GCs remaining). For both NGC 4478 and NGC 4486B, the dynamical friction timescales at their projected radii are ~ 1 – 3 Gyr or shorter, reinforcing the likelihood that these are objects in the final stages of orbital decay toward the center of M87. For both galaxies, there are also *outer* stellar velocity dispersion measurements available, making the extrapolation to σ_{GC} less uncertain. For NGC 4478 this is ~ 50 – 100 km s $^{-1}$ (Halliday et al. 2001), and for NGC 4486B, it is ~ 100 – 120 km s $^{-1}$ (Kormendy et al. 1997; Spolaor et al. 2010).

The present-day luminosity of NGC 4478, $\log(L_V/L_{V,\odot}) = 9.8$, suggests that it may have experienced very little stellar stripping (Figure 11, lower-left), which would explain the lack of surface brightness variations around M87. For NGC 4486B, the implied luminosity at infall of $\log(L_V/L_{V,\odot}) \sim 10.1$ would require that much of the stellar debris is hidden at small galactocentric radii, which is plausible given that this stripped galaxy is currently at a radius of ~ 30 kpc (note that the missing debris is an issue even without considering the GC shell).

Both of these galaxies appear to be possible shell progenitors, as their properties are consistent with all of the constraints discussed above, within the uncertainties, except for the low velocity dispersion in the chevron model (this dispersion could then be considered either as an artifact of the adopted model, or as a product of stripping dynamics that are not yet understood). In fact, the problem could be turned around: given that there are stripped galaxies around M87 which must have lost hundreds of accompanying GCs, should we not expect to see some evidence for them in phase-space?

The multiplicity of candidate shell progenitors is also a reminder that our initial single-progenitor assumption may be oversimplified. It is indeed possible that the phase-space of GCs in the M87 halo contains multiple,

overlapping, prominent shells and streams.¹³ More GC spectra are clearly needed to better determine the substructure properties, and to make clearer progenitor inferences.

As a final plausibility check, we examine whether or not our preferred solution, with an accreted luminosity of $\log(L_V/L_{V,\odot}) \sim 10$, (i.e., $\sim 0.5 L^*$, or a $\sim 1:10$ merger), represents a likely event in the context of other observational constraints on merger rates in BCGs. As discussed in Section 1, the details of BCG assembly are not well known, which motivates our phase-space study, but there are still some plausible upper limits on merger rates. For example, M87 cannot have accreted a galaxy with $\log(L_V/L_{V,\odot}) \sim 10$ more often than once every ~ 1.5 Gyr, averaged over a Hubble time, or else the total luminosity would be higher than is observed today.

The calculation is more complicated than this because the merger history will be divided over a spectrum of mass ratios, and because the merger rate may change with time. We therefore turn to the low- z BCG survey carried out by Liu et al. (2009), who found that major mergers (down to a $\sim 1:4$ mass ratio) were visible in 1 case out of every 30. If we assume for simplicity that mergers are detectable in phase-space for roughly twice as long as in real-space (which is the only place that merger timescales will enter into our calculations), then recent major merger signatures could be found in $\sim 7\%$ of BCGs.

Next, we should like to extrapolate to lower-mass ratios. The simplest assumption we can make is that the accreted objects follow a standard Schechter luminosity function, where 1:4 events correspond to $\sim L^*$ in the case of M87. We then calculate that events down to 1:10 should be present in $\sim 25\%$ of BCGs. Thus it does not seem improbable that the shell in M87 traces a $\sim 1:10$ merger event, while more massive progenitors would begin to stretch the limits of plausibility.

4. OUTER STREAM ANALYSIS

We next analyze the GCs in the northwest area, around “stream A”. Figure 13 summarizes the positional space and phase space properties of this area. The known stellar stream has a V -band luminosity of $(2.4 \pm 0.3) \times 10^8 L_{V,\odot}$ over a $\sim 15 \times 100$ kpc region (Janowiecki et al. 2010).

It is important to keep in mind that the spectroscopic observations were tiled closely around the stellar stream, and much of the apparent narrowness in real space of the overall GC distribution is an artifact of this bias. The fractional return of bona fide GCs from the spectroscopic observations was indeed higher “on-stream” than “off-stream”, but the statistics here are relatively poor and a more in-depth analysis will be required to consider this question further.

We focus instead on a possible cold phase-space substructure within the spectroscopic sample, where the hotter background may be the stream or the general diffuse outer GC system of M87. This tentative substructure consists of 6 GCs (out of 19 in the sample apart from one associated with a nearby galaxy) that are clustered in real-space and follow a cold diagonal path in phase space

¹³ There may be another, related feature in M87: S+11 identified a peculiar velocity offset in the metal-rich GCs inside ~ 10 kpc.

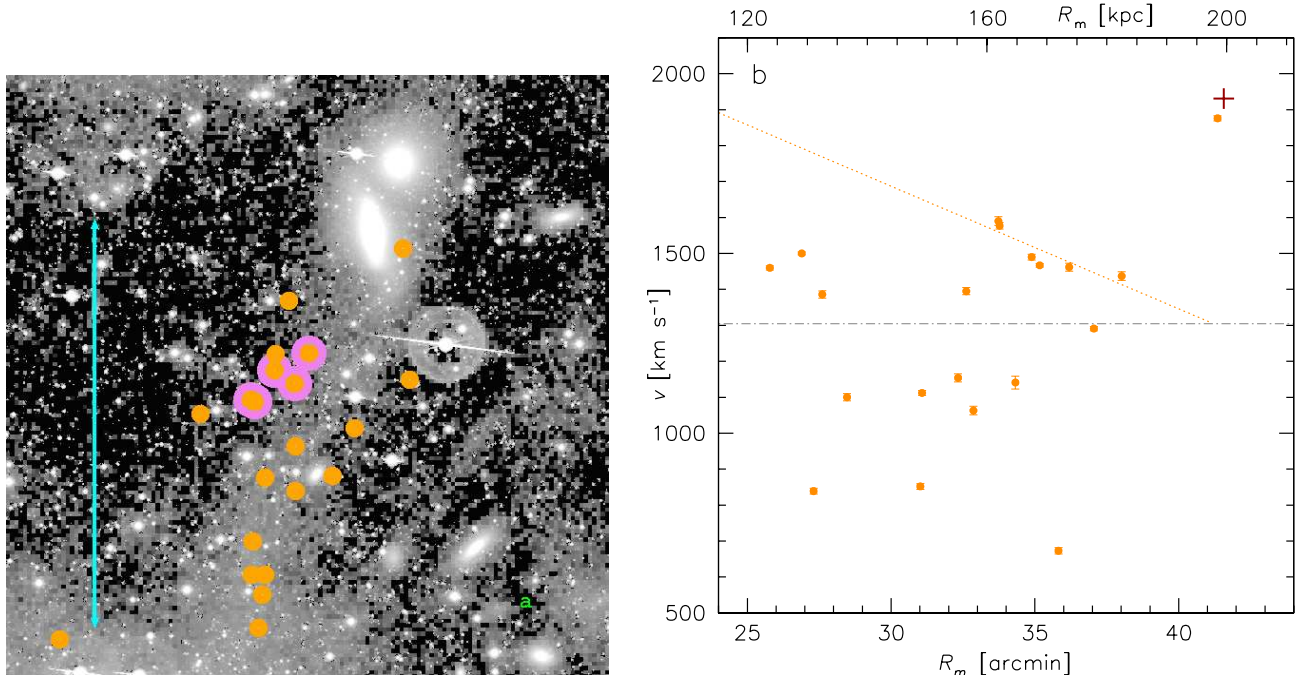


FIG. 13.— Globular clusters near outer “stream A”. (a): positional space (a zoom-in of Figure 1(a)). The five candidate stream GCs are outlined in purple (the two easternmost ones are almost overlapping). The bar with arrows again shows a 100 kpc scale. (b): phase-space (using distance from the center of M87). Velocity uncertainties are indicated by error bars. One GC at upper right is probably bound to the low-luminosity S0 NGC 4461 (red cross). The systemic velocity is shown by a horizontal line, and a diagonal line illustrates our best-fit stream model.

(drawn schematically in Figure 13(b)). Two of these objects are a very close pair, separated spatially by only 2.6 arcsec (0.2 kpc) and in velocity by only 13 km s^{-1} , which is consistent with zero within the uncertainties.

To estimate the chances of this substructure being a chance clumping, we pursue friends-of-friends group finding as previously carried out for the shell (Section 3.2), but reverting to a traditional three-dimensional (x, y, v) phase-space search. In order to pick up the apparent group in the real data, we adopt $w_x = w_y = 50 \text{ arcsec}$ (4.0 kpc), $w_v = 30 \text{ km s}^{-1}$, $\lambda = 0.29$. We then simulate mock data sets using the same positions while drawing velocities from a Gaussian LOSVD with dispersion 271 km s^{-1} , and find groups with 6 or more members by chance only 9% of the time. Again, this analysis is conservative in that the mock data sets start from spatial positions that may not be random, but not conservative in that the group-finding parameters are optimized a posteriori.

We next carry out maximum-likelihood model fits to the data, using a Gaussian plus one-sided chevron model. We estimate that 4_{-2}^{+3} of the GCs in this region belong to the stream, which has a dispersion of $33_{-25}^{+11} \text{ km s}^{-1}$. This model is intended as a characterization of the stream properties rather than as a robust test of its reality, since the fits are somewhat unstable to the starting conditions. The model does not incorporate the full spatial information about the region, and given that the stream objects are also clumped in the azimuthal direction, we consider it likely that the 5 most closely associated objects seen in Figure 13 comprise the stream. Extrapolating to fainter magnitudes from our spectroscopic limit of $i_0 \sim 22.5$, we estimate a total of ~ 15 GCs in the stream clump. However, our spectroscopic survey is incomplete, and there might easily be ~ 20 – 30 stream GCs.

As with the shell analysis, we now consider the independent dimension of metallicity (using color as a proxy). Figure 14 shows that the stream GCs may have a different color distribution from the rest of the GCs. The former are narrowly confined to a blue color range of $(g - i)_0 = 0.71$ – 0.83 (a range in $[\text{Fe}/\text{H}]$ of ~ 0.5 dex), while the latter include a similar blue peak but also a second, much redder peak, with $(g - i)_0 = 0.97$ – 1.13 . From the K-S test, this difference has a 22% chance of occurring randomly. As with the shell, the color information of the stream provides independent confirmation of its distinctiveness.

As discussed for the shell region, we could in principle connect the peak color of the stream GCs to a possible progenitor, but the statistics are currently too poor for strong constraints. Even so, we can still mention one example of a potential analogue to the stream progenitor: the Virgo dwarf elliptical IC 3328, with a stellar dispersion of $\sim 35 \text{ km s}^{-1}$, hosting ~ 40 GCs with a color peak near $(g - z)_0 \sim 0.92$, i.e., $(g - i)_0 \sim 0.77$.

Could this apparent GC stream from a dwarf galaxy be associated with the previously identified stellar stream? The latter has a luminosity of $\log(L_V/L_{V,\odot}) \sim 8.4$ that is consistent with this hypothesis (compare the L_V - σ_c trends for ACSVCS galaxies in the lower-left panel of Figure 11). Its color of $(B - V) \sim 0.8$ also suggests a dwarf progenitor (Rudick et al. 2010), although more massive progenitors are also possible within the uncertainties.

A puzzle is presented by the spatial offset of $\sim 10 \text{ kpc}$ between the stellar and GC substructures (Figure 13(b)). One possibility that will require further modeling is that the GCs and stars followed different trajectories owing to their different initial binding energies. The nucleus of the dwarf could also very well still be visible around M87,

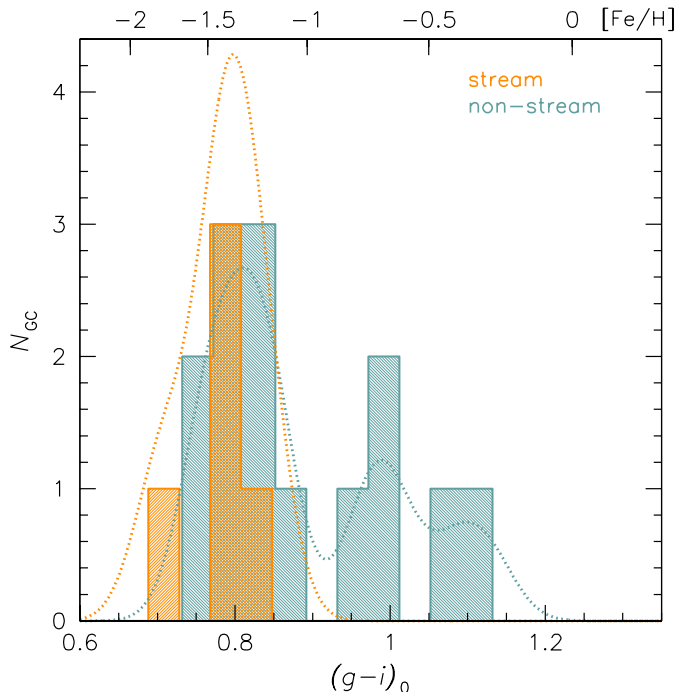


FIG. 14.— Color distribution of GCs in the stream A region. The two colored histograms show the stream and non-stream objects, per the legend, with alternative smoothed distributions also shown (see Figure 10(b)). The stream GCs do not include any red objects, but the difference with the non-stream GCs is not statistically significant.

although we have not identified an obvious candidate.

Another interesting possibility is that both the stream and the shell are part of the same accretion event, since their peak GC colors and velocity dispersions are similar. Exploring this scenario will require more extensive simulations than we can attempt here.

5. THEORETICAL ANALYSIS

We now attempt to model the dynamics of the observed substructures, based mostly on numerical simulations but also making use of analytic representations of orbit kinematics.

The narrow diagonal tracks of the stream and shell in phase space can be understood in simple terms as the near-radial infall of objects with similar initial potential energies. Analogous features are found in Local Group accretion events (Gilbert et al. 2007) and in simulations of minor mergers (e.g., Quinn 1984; Dupraz & Combes 1986; Fardal et al. 2007).

The phase space structure of tidally stripped material can be influenced by many factors (e.g., Hernquist & Quinn 1988, 1989; Johnston 1998; Helmi et al. 1999; Johnston et al. 2002; Helmi 2004; Rudick et al. 2009), which we summarize in broad terms as follows. More massive satellites produce more diffuse streams owing to the higher internal velocity dispersions and larger sizes of these systems. In cuspy potentials, low angular momentum orbits can bring the satellites close to the potential center and lead to broader shells or fan-like features, while in orbits farther out, the weaker tidal shear produces narrower loops and streams. Finally, any dynamically cold substructure will tend to diffuse over time due either to nonaxisymmetry in the host potential or to perturbations from other satellites.

As a proof of principle, we carry out a basic set of simulations inspired by M87 and its substructures. These are not intended to explore the (very large) orbital and progenitor parameter space for the infalling satellite galaxy, or to provide a unique, robust match to the data, but to illustrate qualitatively how comparable features can emerge in phase-space from the tidal stripping of infalling galaxies.

We conduct N -body simulations of self-gravitating low mass galaxies orbiting in a fixed spherical gravitational potential. For this cluster-mass potential, we use a Navarro-Frenk-White model for the dark matter halo (Navarro et al. 1996; McLaughlin 1999), and embed a Hernquist (1990) profile to represent the stellar mass of the central galaxy. The relevant parameters are reported in Table 3.

For the inner shell, the main features that we wish to reproduce are the apparent chevron morphology in phase space including a low velocity dispersion, with a high degree of azimuthal mixing in real-space (see Figure 1). For the outer stream, the goal is to find a thin structure in both real and phase-space, which is not closely connected to the progenitor galaxy or nucleus.

For both features, we adopt the same low mass galaxy model for the infalling satellite, and consider a modest number of orbital configurations. The infalling satellite galaxy follows a single-component Hernquist model, with characteristic parameters summarized in Table 3. A real galaxy will consist of multiple components (stars, GCs, gas, and dark matter), but this introduces additional degrees of freedom to the problem which we are for now keeping as conceptually simple as possible.

We place the satellite on elongated orbits around the potential center,¹⁴ and run the simulations using an N -body treecode (Hernquist 1987), which simulates the fully self-gravitating response of the infalling satellite. The simulations were evolved for several Gyr using a fixed timestep of 0.25 Myr. We create real-space and phase-space plots of all the satellite particles for each time-step, using a small selection of viewing angles. We then select by eye the best combination of timestep and viewing angles that qualitatively resembles the data.

Next, we sample a subset of the particles to represent the GC observations, plotting 10^4 particles to obtain a general sense of the substructure morphology, and an additional subsample of 100 particles for more direct comparison with the data. Our default selection consists of an unbiased, random sample, which can be considered as representing the limiting case where most of the dark halo has been stripped away, with the remaining self-gravitating material traced well by the stars and GCs. In almost every real galaxy, the metal-poor GCs occupy a more extended distribution than the field stars, so we have tried the alternative limiting case where the least bound particles are selected as “GCs”. The results from the two sampling schemes turn out to be qualitatively similar.

Clearly, our procedures are only the initial steps toward modeling the M87 halo kinematics. Ideally, one

¹⁴ Our adopted apocentric distances of ~ 100 – 200 kpc may not seem consistent with satellites that fall in from the large-scale environment, but our goal is to set up an idealized model of accretion dynamics once an object has migrated inwards by scattering or dynamical friction (e.g., Faltenbacher & Mathews 2005).

TABLE 3
PARAMETERS OF ACCRETION SIMULATIONS

	Cold shell	Cold stream	Hot shell
satellite effective radius, R_e [kpc]	1	1	4
satellite velocity dispersion, $\sigma_p(R_e)$ [km s $^{-1}$]	35	35	200
satellite mass, M_{sat} [M_\odot]	1.8×10^9	1.8×10^9	3.2×10^{11}
particle number, N_p	65,536	65,536	65,536
particle mass, M_p [M_\odot]	2.75×10^4	2.75×10^4	4.9×10^6
gravitational softening length, r_1 [pc]	20	20	22
initial transverse velocity, v_t/v_c	0.05	0.1	0.1
initial apocentric radius, r_{apo} [kpc]	90	200	90
initial pericentric radius, r_{peri} [kpc]	2	12	4.7
host dark halo virial mass, M_{200} [M_\odot]	4.2×10^{14}	4.2×10^{14}	4.2×10^{14}
host dark halo virial radius, r_{200} [Mpc]	1.55	1.55	1.55
host dark halo scale radius, r_s [Mpc]	0.564	0.564	0.564
host stellar effective radius, R_e [kpc]	7	7	7
host circular velocity at R_e , v_c [km s $^{-1}$]	475	475	475
timestep, t_s [Myr]	0.23	0.23	0.14

would like to: use a live, triaxial potential that includes the effects of dynamical friction and other substructures; explore a wide range of satellite and orbital parameters; and use an objective, quantitative metric for optimizing the model fits. However, our current approach is adequate for providing a broad sense of some of the types of substructure signatures that are physically plausible, which one can see in related analyses of other systems (Hernquist & Quinn 1988; Merrifield & Kuijken 1998; Harding et al. 2001; Bullock & Johnston 2005; Gilbert et al. 2007; Fardal et al. 2007; Peñarrubia et al. 2010).

The best qualitative matches that we identified for the shell and the stream (separately) were shown in Figure 2. The shell progenitor has made a close passage to the center of M87 and was largely disrupted, leaving a classic chevron signature in phase space, while also being spread out in positional space. The stream progenitor has a larger pericenter and is disrupted more gradually, maintaining integrity as a narrow stream in both phase space and positional space for many orbits.

In a real system, any triaxiality of the potential would cause the orbits to phase-mix more rapidly, and the time-evolution of the mass distribution would presumably smear out the cold substructures even further (as well as inhibit any orbital resonances that might in principle be an alternative mechanism for producing cold kinematical features). Simulations of cluster-scale tidal streams in a cosmological context (Rudick et al. 2009) indicate that streams are disrupted over timescales of ~ 2 – 4 times the local dynamical timescale, $t_{\text{dyn}} \sim r/v_c$. For the shell and stream, $t_{\text{dyn}} \sim 0.2$ and 0.5 Gyr, respectively, so their most likely lifetimes are ~ 0.5 Gyr and ~ 1.5 Gyr.

One important feature of coherent substructures is that they trace out a close family of orbits over large scales in galaxy halos, and can thus be used to provide unique constraints on the gravitational potential, including the radial distribution and shape of the dark matter halo (e.g., Law et al. 2009; Kozlov et al. 2010; Varghese et al. 2011). The case of a spherical system is conceptually simple: the potential energy lost by particles as they fall in towards the center of the host galaxy is reflected in a monotonic trend of increasing velocities with decreasing radius, modulo projection effects (Merrifield & Kuijken

1998).

We derive a new formulation of this method, assuming a spherical gravitational field of a power-law form, where the total density, circular velocity, and potential are:

$$\rho_{\text{tot}} \propto r^{-\alpha}, \quad (9)$$

$$v_c = v_0 \left(\frac{r}{r_0} \right)^{1-\frac{\alpha}{2}}, \quad (10)$$

$$\Phi(r) = \frac{v_0^2}{2-\alpha} \left(\frac{r}{r_0} \right)^{2-\frac{\alpha}{2}}, \quad (11)$$

where $\alpha < 2$, as is probably appropriate on ~ 10 – 100 kpc scales in M87 (cf. also section 2.2(f) of Binney & Tremaine 2008). Following equation (3) of Merrifield & Kuijken (1998), we consider a thin shell of radius r_{apo} where particles have zero velocity (i.e., they are on radial orbits at apocenter). By conservation of energy and by geometry, their line-of-sight velocities at 3-D radius r and 2-D radius R are then given by

$$v_{\text{LOS}}^2 = 2 \left(1 - \frac{R^2}{r^2} \right) [\Phi(r_{\text{apo}}) - \Phi(r)]. \quad (12)$$

The velocity “edge” of the shell is then determined by solving for the maximum of v_{LOS} at a given radius R . By fitting this simple model to a cold phase-space feature, we can then estimate the value of v_c near r_{apo} . An even more simplified way to understand this constraint (Merrifield & Kuijken 1998) is that the slope of the shell velocity edge with radius in phase-space is approximately equal to v_c/r_{apo} . In practice, the dominant effect is the change of potential energy, so the determination of v_c is fairly insensitive to the form adopted for $\Phi(r)$.

In Figure 15 we show this model applied to the stream and to two possible shells in M87, where we have taken the maximum-likelihood linear-slope fits from Sections 3.4 and 4 as starting points for approximate fits in phase-space. The model reproduces nicely the observed radial trends, and suggests some possible connections in phase-space between the shells and nearby low-luminosity ellipticals. Also shown in the figure are halo PNe, which show hints of tracing some of the same substructures seen in the GCs. More precise orbital fits to

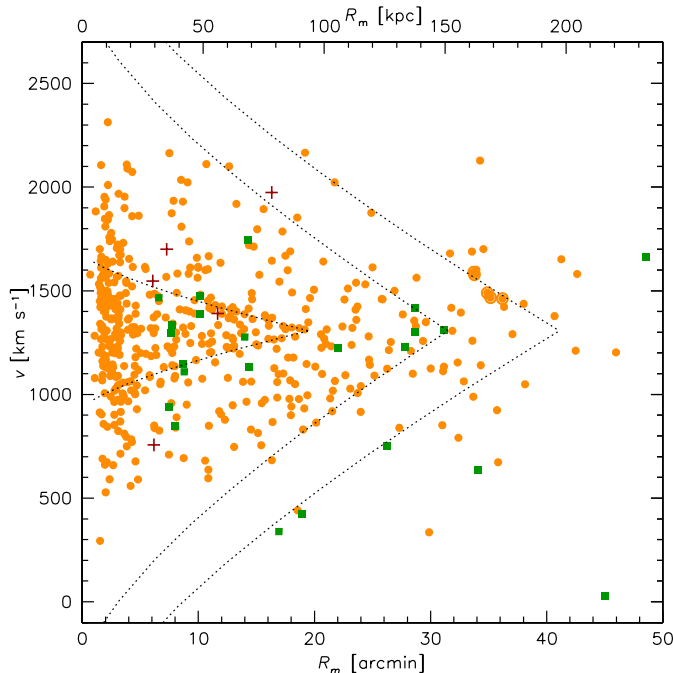


FIG. 15.— Phase-space diagram of M87 as in Figure 1(b), with three monoenergetic model curves over-plotted (see text for details). GC and satellite galaxy data are shown by orange dots and red crosses as before, with planetary nebulae (Doherty et al. 2009) also now included as green squares. The outer stream subgroup of GCs (at $R_m \sim 35$ arcmin) is highlighted with larger circles. The inner shell and outer stream GCs can be represented well by model curves as shown, and there is a hint of an intermediate-radius shell as marked, whose apex could explain the low velocity dispersion found in a subgroup of the PNe.

the substructures and the potential progenitors will require dedicated dynamical modeling (e.g., Romanowsky & Kochanek 2001; Murphy et al. 2011).

There is a hitch with these model curves: the implied circular velocities differ radically from typical estimates for the M87 potential. At $r \sim 20, 32, 41$ arcmin ($\sim 90, 150, 200$ kpc), we infer $v_c \sim 270, 1200, 1400$ km s $^{-1}$, albeit with substantial uncertainties. Previous estimates from dynamical and X-ray analyses yielded $v_c \sim 650$ – 900 km s $^{-1}$ over this entire radial range (Das et al. 2010; Murphy et al. 2011), while our own equilibrium-based dynamical analysis indicates $v_c \sim 400$ – 550 km s $^{-1}$ (S+11).¹⁵ These discrepancies should not be a major concern at this point because there are various complications to consider including the radius convention of Section 3.1, as well as non-spherical effects (Jílková et al. 2010). In particular, a planar orbit viewed near face-on will show depressed line-of-sight velocities, and a reduced opening angle of the chevron.

An illustration of the latter effect is provided in Figure 16, which shows an alternative orbit for the shell that has higher angular momentum than our fiducial case, and maintains better planar integrity. Here the “measured” v_c would be ~ 250 km s $^{-1}$, despite the true value in the

¹⁵ The local escape velocity is at least $v_e = 2^{1/2} v_c$. We regard the $v_c \sim 550$ km s $^{-1}$ model as plausibly describing a massive group-sized dark matter halo around M87, in which case $v_e \gtrsim 800$ km s $^{-1}$. This would indicate a bound-velocity range of ~ 500 – 2100 km s $^{-1}$, and probably wider, suggesting that most or all of the objects in Figure 15 are bound to M87 (modulo the unknown proper-motion velocities).

model being 635 km s $^{-1}$. Note that the simulation shown is also representative of a large family of orbits that are not a good match to the shell observations because of the high degree of spatial coherence.

As discussed at length in Section 3.6, there is an apparent conflict between the shell’s inferred kinematical coldness and the large number of GCs, since these imply very different progenitor masses. We consider this issue more explicitly by changing the simulated shell progenitor to correspond to a more massive galaxy, with parameters summarized in Table 3.

We show an example post-disruption snapshot in Figure 17, finding as expected that the resulting shell kinematics are hotter than in the dwarf-galaxy simulation, and do not compare as favorably to the observations (compare Figures 2(b) and 3(b)). However, as previously discussed, this tension is alleviated if we modify our default radius convention and chevron-based model (compare Figure 3(a)).

These simulations bracket the simple cases of very low- and high-mass progenitor galaxies, but a worthwhile endeavor for the future would be simulating more detailed intermediate-mass cases, including bulge, disk, stellar halo, and dark matter halo subcomponents. An additional aspect that could be pursued is the modeling of velocity gradients with azimuthal angle, which should be generically found in tidal features (e.g., Helmi et al. 2003). Our initial look at the M87 shell data shows no clear sign of such effects.

6. SUMMARY

We have used an unprecedentedly wide-field data set of high-precision globular cluster velocities to search for phase-space substructure around the central cluster galaxy M87. The large majority of the data are from S+11, with a few additional velocities obtained from the literature, and from a new sample of Keck/DEIMOS spectroscopy presented here that targets a known filament of stellar light in the outer halo. Analysis of $(g-i)$ colors and spectroscopic metallicities for a subset of our GC sample confirms that the colors provide a good proxy for metallicity, allowing for chemical tagging of substructures.

We identify two candidate features: one a small stream near to the outer-halo stellar filament, and the other a previously unknown colossal “shell” in the inner halo. We have carried out extensive statistical tests and characterizations of these substructures.

The outer GC stream appears to be a collection of 15 ± 10 objects (after extrapolating to fainter magnitudes) residing in a $\sim 5 \times 20$ kpc clump with an internal velocity dispersion of $\sim 30 \pm 20$ km s $^{-1}$. We have found the presence of this stream to be significant both in a group-finding analysis ($p = 0.09$), from a maximum likelihood model ($p = 0.025$), and from its distinctive color distribution compared to the surrounding GCs ($p = 0.22$).

The stream dispersion, its GC colors and numbers counts, the color of the stellar filament, and the filament’s narrowness all suggest the accretion of a dwarf galaxy. Low-mass kinematical substructures in elliptical galaxies have been inferred in other studies (Côté et al. 2003; Woodley & Harris 2011), but in this case the association with a visible counterpart should allow for a

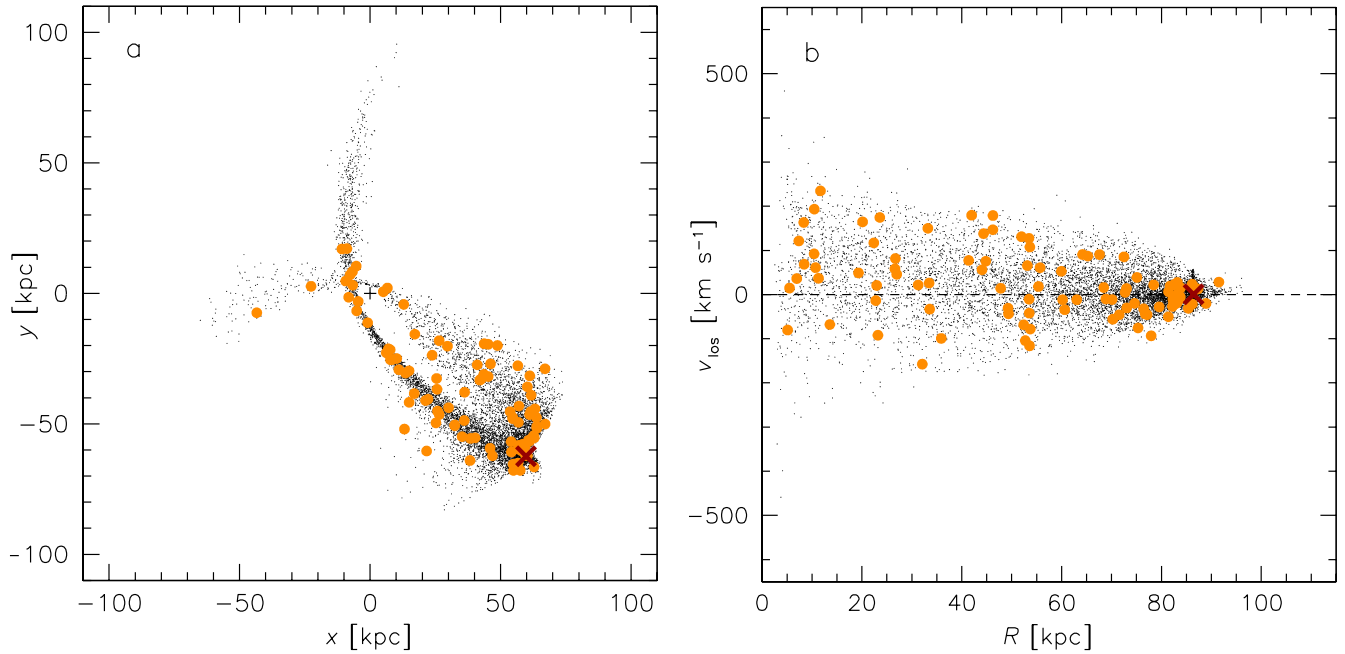


FIG. 16.— Cold accretion model with higher initial angular momentum, viewed near face-on (compare Figure 2; note that both the vertical and horizontal scales have been shrunk in tandem for a fair comparison of angles). The snapshot corresponds to 2 Gyr after the initial apocenter. The opening angle of the chevron is smaller than in Figure 2(b), and in position-space the stream stays highly coherent for many orbits (in the absence of perturbations in the potential).

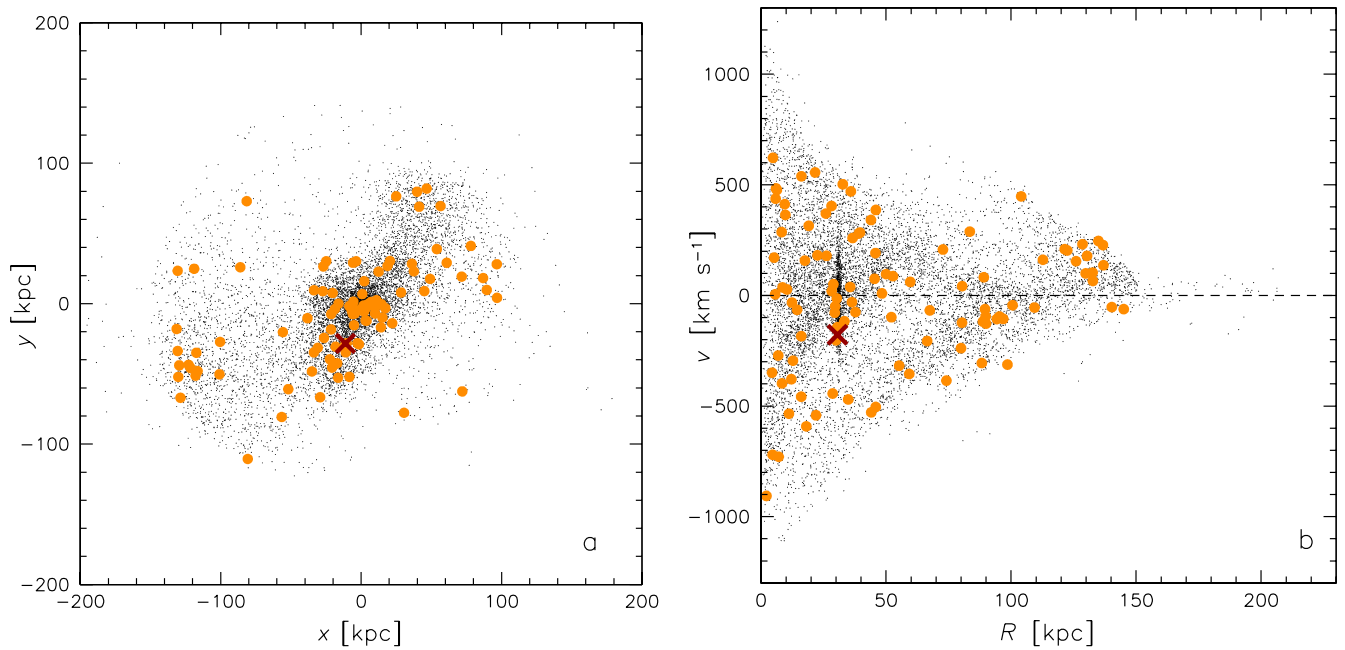


FIG. 17.— Hot accretion model, similar to the shell simulation in Figure 2 but with a $100\times$ more massive progenitor. Here the snapshot corresponds to 1.5 Gyr after the initial apocenter. Similar features are present as with the low-mass galaxy but are less distinct.

much clearer determination of the accretion dynamics.

The shell of GCs has a chevron-like shape in phase-space that resembles classic expectations for a disrupted infalling system (Hernquist & Quinn 1988), although the interpretation in detail is more challenging. The appearance of the shell is sharpened by a change of coordinates from simple radius to elliptical, circular-equivalent radius. The significance of the shell in phase-space is established using a group-finding algorithm ($p < 0.01$), a crude entropy metric ($p = 0.31$), and a maximum-likelihood chevron-based model ($p < 0.01$ compared to a pure Gaussian model). The color distribution of the shell and non-shell GCs from the same region is different ($p = 0.13$), providing independent evidence for the existence of the shell. The phase-space morphology resembles a simple chevron model more than a wedge or tapered Gaussian, but may very well have a complex, intermediate morphology; however, such uncertainties do not compromise our basic finding of a relatively massive and cold substructure.

We find from maximum-likelihood fitting that the shell contains 500–1100 GCs, which is ~ 5 times the entire Milky Way system, and comprises around 20% of M87’s GCs in the 50–95 kpc region. This number suggests a stellar debris field of $(2\text{--}6)\times 10^{10}L_{\odot}$, brought in by either a large group of dwarf galaxies, or by a single giant elliptical or lenticular galaxy.

The dramatic appearance of the shell in phase-space is due to its relatively cold kinematics, with an estimated velocity dispersion of 10–30 km s⁻¹ (or up to ~ 120 km s⁻¹ if we make generous allowances for uncertainties concerning the shell morphology). The lower velocity dispersion estimates are difficult to reconcile with the number of inferred GCs, as they most naturally imply a dwarf galaxy hosting only a handful of GCs. However, after allowing for systematic uncertainties in our analyses, we suggest a solution involving an E/S0 progenitor with a luminosity of $\sim 0.5 L^*$, which could very well also be the parent galaxy for one of the tidally-stripped galaxies now visible close in to M87.

There is a critical need for additional data from the shell region, including new velocities of both GCs and PNe, in order to confirm the presence of the substructure and to refine our estimates of its characteristics. Along these lines, we have recently obtained another cycle of GC spectroscopy from MMT/Hectospec that includes ~ 35 velocity measurements of independent objects in the shell region. A preliminary analysis yields no obvious sign of substructure, but the statistics from the new data are poor, and at least another ~ 100 velocities are needed.

We have carried out simplified N -body simulations of satellite galaxy accretion in a static cluster+BCG potential, finding that these readily produce streams and chevrons in phase space. In one simulation, a dwarf galaxy has recently fallen in and is partially disrupted, forming a classic, narrow tidal stream in both positional and phase space. In a second case, the initial infall orbit had much lower angular momentum, so that the satellite galaxy passed close to the center of M87 and was quickly disrupted. Its remnants are strewn more haphazardly across positional space and could be difficult to discern against the main body of M87, while a distinct chevron persists in phase space, with the apex corresponding to

a shell turning point.

These simulations compare favorably to the M87 observations because the low internal velocity dispersions of the dwarf progenitors result in cold kinematics for the tidal debris. Simulations of a more massive progenitor produce hotter kinematics that do not as strongly resemble the data for the “shell”, reiterating the tension between the different constraints on the shell progenitor mass, which remains unresolved pending further observations and modeling. It would be worth also investigating alternative explanations for the substructure, such as a shell-like boundary between well-mixed GC subpopulations formed or accreted in different epochs.

We have explored the use of the velocity-radius slopes of the substructures in phase-space estimate the underlying gravitational potential and dark matter distribution around M87. However, the interpretation of the data appears to be complicated by non-spherical effects.

Taken at face value, the shell GCs imply a substantial, recent accretion event in the halo of M87. This is the first large substructure identified around a central cluster galaxy, the first large stellar substructure with a clear kinematical detection in *any* type of galaxy beyond the Local Group, and by far the largest shell or stream discovered in the Local Universe.

M87 was a favored target for our survey as well as previous ones because of its proximity, rich GC system, and *general lack of obvious dynamical disturbance*. The large shell we have discovered is an example of the lurking accretion signatures that could be found from detailed phase-space studies of apparently placid galaxies.

There are however more indirect lines of evidence for a recent minor merger in M87, such as an off-center supermassive black hole (Batcheldor et al. 2010), a lopsided central GC velocity distribution (S+11), an accretion powered jet, and several surrounding peculiar low-luminosity satellites that could be the nuclei of since-shredded disk galaxies. Further theoretical work is needed to see if these features could all be explained by a unified scenario involving a recent gas-rich minor merger.

The shell and stream in M87 have probable lifetimes of ~ 0.5 Gyr and ~ 1.5 Gyr, respectively. Given our best guesses for the progenitors of these features, the total luminosity of M87 would be built up by ~ 10 or ~ 1000 events corresponding to the shell or the stream, respectively. If these recent events are representative of the long-term evolution of M87, and by extension of the class of brightest cluster galaxies in general, then they support a picture of late-epoch growth by hierarchical assembly (De Lucia & Blaizot 2007).

More generally, the M87 results are another demonstration of the potency of GCs for providing unique information about the stellar halos of galaxies. We note the concluding prediction of Naab et al. (2009) for their landmark two-phase galaxy formation scenario: “...the outer parts of massive giant ellipticals will tend to be old, blue, metal-poor, and relatively uniform from galaxy to galaxy since they are all composed essentially of the debris from tidally destroyed accreted small systems.” Globular clusters have in fact long provided evidence for exactly this scenario.

We thank Nelson Caldwell for assistance with observations; Jason X. Prochaska and Kate Rubin for software help; Magda Arnaboldi for providing results in electronic form; Lars Hernquist, Bill Mathews, and Mike Merrifield for helpful discussions; Vincenzo Pota for sharing his analyses in preparation; and Eric Emsellem for a constructive review.

J.B. and A.J.R. acknowledge support from the NSF through grants AST-0808099, AST-0909237, AST-1101733, and AST-1109878, and by the UCSC University Affiliated Research Center's Aligned Research Program. J.S. was supported by NASA through a Hubble Fellowship, administered by the Space Telescope Science Institute, which is operated by the Association of Universities for Research in Astronomy, Incorporated, under NASA contract NAS5-26555. J.C.M. has been supported by the NSF through grants AST-0607526 and AST-0707793. We acknowledge financial support from the *Access to Major Research Facilities Programme*, a component of the *International Science Linkages Programme* established under the Australian Government's innovation statement, *Backing Australia's Ability*. Much of the data presented herein were obtained at the W. M. Keck Observatory, which is operated as a scientific partnership among the California Institute of Technol-

ogy, the University of California and the National Aeronautics and Space Administration. The Observatory was made possible by the generous financial support of the W. M. Keck Foundation. Observations reported here were obtained at the MMT Observatory, a joint facility of the Smithsonian Institution and the University of Arizona. Based in part on data collected at Subaru Telescope (which is operated by the National Astronomical Observatory of Japan), via a Gemini Observatory time exchange (GN-2009A-C-204). This research used the facilities of the Canadian Astronomy Data Centre operated by the National Research Council of Canada with the support of the Canadian Space Agency. We acknowledge the usage of the HyperLeda database (<http://leda.univ-lyon1.fr>). This research has made use of the NASA/IPAC Extragalactic Database (NED) which is operated by the Jet Propulsion Laboratory, California Institute of Technology, under contract with the National Aeronautics and Space Administration. Based on observations made with the NASA/ESA Hubble Space Telescope, and obtained from the Hubble Legacy Archive, which is a collaboration between the Space Telescope Science Institute (STScI/NASA), the Space Telescope European Coordinating Facility (ST-ECF/ESA) and the Canadian Astronomy Data Centre (CADC/NRC/CSA).

REFERENCES

- Arnold, J. A., Romanowsky, A. J., Brodie, J. P., Chomiuk, L., Spitler, L. R., Strader, J., Benson, A. J., & Forbes, D. A. 2011, *ApJ*, 736, L26
- Arp, H., & Bertola, F. 1971, *ApJ*, 163, 195
- Ascaso, B., Aguerrri, J. A. L., Varela, J., Cava, A., Bettoni, D., Moles, M., & D'Onofrio, M. 2011, *ApJ*, 726, 69
- Ashman, K. M., Bird, C. M., & Zepf, S. E. 1994, *AJ*, 108, 2348
- Batcheldor, D., Robinson, A., Axon, D. J., Perlman, E. S., & Merritt, D. 2010, *ApJ*, 717, L6
- Bellazzini, M., Ferraro, F. R., & Ibata, R. 2003, *AJ*, 125, 188
- Belokurov, V., et al. 2006, *ApJ*, 642, L137
- Bergond, G., Zepf, S. E., Romanowsky, A. J., Sharples, R. M., & Rhode, K. L. 2006, *A&A*, 448, 155
- Bernardi, M. 2009, *MNRAS*, 395, 1491
- Binney, J., & Tremaine, S. 2008, *Galactic Dynamics: Second Edition*, Princeton University Press
- Brodie, J. P., & Strader, J. 2006, *ARA&A*, 44, 193
- Brodie, J. P., Romanowsky, A. J., Strader, J., & Forbes, D. A. 2011, *AJ*, 142, 199
- Brough, S., Tran, K.-V., Sharp, R. G., von der Linden, A., & Couch, W. J. 2011, *MNRAS*, 414, L80
- Buitrago, F., Trujillo, I., Conselice, C. J., Bouwens, R. J., Dickinson, M., & Yan, H. 2008, *ApJ*, 687, L61
- Bullock, J. S., & Johnston, K. V. 2005, *ApJ*, 635, 931
- Carollo, D., et al. 2007, *Nature*, 450, 1020
- Cassata, P., Giavalisco, M., Guo, Y., et al. 2011, *ApJ*, 743, 96
- Chilingarian, I. V. 2009, *MNRAS*, 394, 1229
- Cocato, L., et al. 2009, *MNRAS*, 394, 1249
- Cocato, L., Gerhard, O., & Arnaboldi, M. 2010, *MNRAS*, 407, L26
- Cohen, J. G., Blakeslee, J. P., & Ryzhov, A. 1998, *ApJ*, 496, 808
- Cohen, J. G., & Ryzhov, A. 1997, *ApJ*, 486, 230
- Collins, C. A., et al. 2009a, *Nature*, 458, 603
- Collins, M. L. M., et al. 2009b, *MNRAS*, 396, 1619
- Cooper, A. P., Martínez-Delgado, D., Helly, J., et al. 2011, *ApJ*, 743, L21
- Cortesi, A., Merrifield, M. R., Arnaboldi, M., et al. 2011, *MNRAS*, 414, 642
- Côté, P., Marzke, R. O., & West, M. J. 1998, *ApJ*, 501, 554
- Côté, P., McLaughlin, D. E., Cohen, J. G., & Blakeslee, J. P. 2003, *ApJ*, 591, 850
- Damjanov, I., et al. 2009, *ApJ*, 695, 101
- Das, P., Gerhard, O., Churazov, E., & Zhuravleva, I. 2010, *MNRAS*, 409, 1362
- De Lucia, G., & Blaizot, J. 2007, *MNRAS*, 375, 2
- Doherty, M., et al. 2009, *A&A*, 502, 771
- Dupraz, C., & Combes, F. 1986, *A&A*, 166, 53
- Durrell, P. R., Mihos, J. C., Feldmeier, J. J., Jacoby, G. H., & Ciardullo, R. 2003, *ApJ*, 582, 170
- Evstigneeva, E. A., Gregg, M. D., Drinkwater, M. J., & Hilker, M. 2007, *AJ*, 133, 1722
- Fardal, M. A., Guhathakurta, P., Babul, A., & McConnachie, A. W. 2007, *MNRAS*, 380, 15
- Feldmeier, J. J., Ciardullo, R., Jacoby, G. H., & Durrell, P. R. 2003, *ApJS*, 145, 65
- Forbes, D. A., & Bridges, T. 2010, *MNRAS*, 404, 1203
- Forbes, D. A., Spitler, L. R., Strader, J., Romanowsky, A. J., Brodie, J. P., & Foster, C. 2011, *MNRAS*, 413, 2943
- Forte, J. C., Martinez, R. E., & Muzzio, J. C. 1982, *AJ*, 87, 1465
- Foster, C., Forbes, D. A., Proctor, R. N., Strader, J., Brodie, J. P., & Spitler, L. R. 2010, *AJ*, 139, 1566
- Foster, C., Spitler, L. R., Romanowsky, A. J., et al. 2011, *MNRAS*, 415, 3393
- Gao, S., Jiang, B.-W., & Zhao, Y.-H. 2007, *CJAA*, 7, 111
- Geisler, D., Wallerstein, G., Smith, V. V., & Casetti-Dinescu, D. I. 2007, *PASP*, 119, 939
- Gilbert, K. M., et al. 2007, *ApJ*, 668, 245
- Gilbert, K. M., et al. 2009, *ApJ*, 705, 1275
- Gültekin, K., Richstone, D. O., Gebhardt, K., et al. 2009, *ApJ*, 698, 198
- Halliday, C., Davies, R. L., Kuntschner, H., et al. 2001, *MNRAS*, 326, 473
- Hanes, D. A., Côté, P., Bridges, T. J., McLaughlin, D. E., Geisler, D., Harris, G. L. H., Hesser, J. E., & Lee, M. G. 2001, *ApJ*, 559, 812
- Harding, P., Morrison, H. L., Olszewski, E. W., Arabadjis, J., Mateo, M., Dohm-Palmer, R. C., Freeman, K. C., & Norris, J. E. 2001, *AJ*, 122, 1397
- Harris, W. E. 2009, *ApJ*, 703, 939
- Hasegan, M., et al. 2005, *ApJ*, 627, 203
- Hasegan, I. M. 2007, Ph.D. Thesis, Rutgers Univ.
- Helmi, A., White, S. D. M., de Zeeuw, P. T., & Zhao, H. 1999, *Nature*, 402, 53
- Helmi, A., Navarro, J. F., Meza, A., Steinmetz, M., & Eke, V. R. 2003, *ApJ*, 592, L25
- Helmi, A. 2004, *ApJ*, 610, L97
- Helmi, A. 2008, *A&A Rev.*, 15, 145
- Hernquist, L. 1987, *ApJS*, 64, 715
- Hernquist, L. 1990, *ApJ*, 356, 359
- Hernquist, L., & Quinn, P. J. 1988, *ApJ*, 331, 682

- Hernquist, L., & Quinn, P. J. 1989, *ApJ*, 342, 1
- Hernquist, L., & Spiegel, D. N. 1992, *ApJ*, 399, L117
- Hibbard, J. E., & Mihos, J. C. 1995, *AJ*, 110, 140
- Hopkins, P. F., Bundy, K., Hernquist, L., Wuyts, S., & Cox, T. J. 2010, *MNRAS*, 401, 1099
- Huchra, J., & Brodie, J. 1987, *AJ*, 93, 779
- Ibata, R., Irwin, M., Lewis, G., Ferguson, A. M. N., & Tanvir, N. 2001, *Nature*, 412, 49
- Janowiecki, S., Mihos, J. C., Harding, P., Feldmeier, J. J., Rudick, C., & Morrison, H. 2010, *ApJ*, 715, 972
- Jílková, L., Jungwiert, B., Krížek, M., Ebrova, I., Stoklasova, I., Bartakova, T., & Bartoskova, K. 2010, *Galaxy Wars: Stellar Populations and Star Formation in Interacting Galaxies*, 423, 243
- Johnston, K. V. 1998, *ApJ*, 495, 297
- Johnston, K. V., Spiegel, D. N., & Haydn, C. 2002, *ApJ*, 570, 656
- Johnston, K. V., Bullock, J. S., Sharma, S., Font, A., Robertson, B. E., & Leitner, S. N. 2008, *ApJ*, 689, 936
- Jordan, A., et al. 2007, *ApJS*, 171, 101
- Jordan, A., et al. 2009, *ApJS*, 180, 54
- Khochfar, S., & Silk, J. 2006, *ApJ*, 648, L21
- Kissler-Patig, M., & Gebhardt, K. 1998, *AJ*, 116, 2237
- Koch, A., et al. 2008, *ApJ*, 689, 958
- Koposov, S. E., Rix, H.-W., & Hogg, D. W. 2010, *ApJ*, 712, 260
- Kormendy, J., Bender, R., Magorrian, J., et al. 1997, *ApJ*, 482, L139
- Kormendy, J., Fisher, D. B., Cornell, M. E., & Bender, R. 2009, *ApJS*, 182, 216
- Krick, J. E., Bridge, C., Desai, V., Mihos, J. C., Murphy, E., Rudick, C., Surace, J., & Neill, J. 2011, *ApJ*, 735, 76
- Larsen, S. S., Brodie, J. P., Huchra, J. P., Forbes, D. A., & Grillmair, C. J. 2001, *AJ*, 121, 2974
- Law, D. R., Majewski, S. R., & Johnston, K. V. 2009, *ApJ*, 703, L67
- Lee, Y.-W., Gim, H. B., & Casetti-Dinescu, D. I. 2007, *ApJ*, 661, L49
- Liu, F. S., Mao, S., Deng, Z. G., Xia, X. Y., & Wen, Z. L. 2009, *MNRAS*, 396, 2003
- Lotz, J. M., Miller, B. W., & Ferguson, H. C. 2004, *ApJ*, 613, 262
- Mackey, A. D., et al. 2010, *ApJ*, 717, L11
- Martinez-Delgado, D., et al. 2010, *AJ*, 140, 962
- Faltenbacher, A., & Mathews, W. G. 2005, *MNRAS*, 362, 498
- McIntosh, D. H., Guo, Y., Hertzberg, J., Katz, N., Mo, H. J., van den Bosch, F. C., & Yang, X. 2008, *MNRAS*, 388, 1537
- McLaughlin, D. E. 1999, *ApJ*, 512, L9
- McNeil, E. K., Arnaboldi, M., Freeman, K. C., Gerhard, O. E., Coccato, L., & Das, P. 2010, *A&A*, 518, A44
- Merrett, H. R., et al. 2003, *MNRAS*, 346, L62
- Merrifield, M. R., & Kuijken, K. 1998, *MNRAS*, 297, 1292
- Mihos, J. C., Harding, P., Feldmeier, J., & Morrison, H. 2005, *ApJ*, 631, L41
- Miyazaki, S., et al. 2002, *PASJ*, 54, 833
- Mouhcine, M., Ibata, R., & Rejkuba, M. 2011, *MNRAS*, 415, 993
- Murphy, J. D., Gebhardt, K., & Adams, J. J. 2011, *ApJ*, 729, 129
- Naab, T., Johansson, P. H., & Ostriker, J. P. 2009, *ApJ*, 699, L178
- Navarro, J. F., Frenk, C. S., & White, S. D. M. 1996, *ApJ*, 462, 563
- Nolthenius, R., & Ford, H. 1986, *ApJ*, 305, 600
- Oser, L., Ostriker, J. P., Naab, T., Johansson, P. H., & Burkert, A. 2010, *ApJ*, 725, 2312
- Oser, L., Naab, T., Ostriker, J. P., & Johansson, P. H. 2012, *ApJ*, 744, 63
- Paturel, G., Petit, C., Prugniel, P., et al. 2003, *A&A*, 412, 45
- Peek, J. E. G., & Graves, G. J. 2010, *ApJ*, 719, 415
- Penarrubia, J., Belokurov, V., Evans, N. W., Martinez-Delgado, D., Gilmore, G., Irwin, M., Niederste-Ostholt, M., & Zucker, D. B. 2010, *MNRAS*, 408, L26
- Peng, E. W., et al. 2006, *ApJ*, 639, 95
- Peng, E. W., et al. 2008, *ApJ*, 681, 197
- Perrett, K. M., Stiff, D. A., Hanes, D. A., & Bridges, T. J. 2003, *ApJ*, 589, 790
- Proctor, R. N., Forbes, D. A., Romanowsky, A. J., Brodie, J. P., Strader, J., Spolaor, M., Mendel, J. T., & Spitler, L. 2009, *MNRAS*, 398, 91
- Prugniel, P., Zeilinger, W., Koleva, M., & de Rijcke, S. 2011, *A&A*, 528, A128
- Quinn, P. J. 1984, *ApJ*, 279, 596
- Richtler, T., Salinas, R., Misgeld, I., Hilker, M., Hau, G. K. T., Romanowsky, A. J., Schuberth, Y., & Spolaor, M. 2011, *A&A*, 531, A119
- Rix, H.-W., de Zeeuw, P. T., Cretton, N., van der Marel, R. P., & Carollo, C. M. 1997, *ApJ*, 488, 702
- Romanowsky, A. J., & Kochanek, C. S. 2001, *ApJ*, 553, 722
- Romanowsky, A. J., Strader, J., Spitler, L. R., Johnson, R., Brodie, J. P., Forbes, D. A., & Ponman, T. 2009, *AJ*, 137, 4956
- Rudick, C. S., Mihos, J. C., Frey, L. H., & McBride, C. K. 2009, *ApJ*, 699, 1518
- Rudick, C. S., Mihos, J. C., Harding, P., Feldmeier, J. J., Janowiecki, S., & Morrison, H. L. 2010, *ApJ*, 720, 569
- Ruszkowski, M., & Springel, V. 2009, *ApJ*, 696, 1094
- Schuberth, Y., Richtler, T., Hilker, M., Dirsch, B., Bassino, L. P., Romanowsky, A. J., & Infante, L. 2010, *A&A*, 513, A52
- Searle, L., & Zinn, R. 1978, *ApJ*, 225, 357
- Shih, H.-Y., & Mendez, R. H. 2010, *ApJ*, 725, L97
- Spolaor, M., Hau, G. K. T., Forbes, D. A., & Couch, W. J. 2010, *MNRAS*, 408, 254
- Starkenburger, E., et al. 2009, *ApJ*, 698, 567
- Stott, J. P., Collins, C. A., Burke, C., Hamilton-Morris, V., & Smith, G. P. 2011, *MNRAS*, 414, 445
- Strader, J., Brodie, J. P., & Forbes, D. A. 2004, *AJ*, 127, 3431
- Strader, J., Romanowsky, A. J., Brodie, J. P., et al. 2011, *ApJS*, 197, 33 (S+11)
- Tal, T., van Dokkum, P. G., Nelan, J., & Bezanson, R. 2009, *AJ*, 138, 1417
- Toloba, E., Boselli, A., Cenarro, A. J., et al. 2011, *A&A*, 526, A114
- Trujillo, I., et al. 2006, *ApJ*, 650, 18
- Valentinuzzi, T., et al. 2010, *ApJ*, 721, L19
- van der Wel, A., Holden, B. P., Zirm, A. W., Franx, M., Rettura, A., Illingworth, G. D., & Ford, H. C. 2008, *ApJ*, 688, 48
- van Dokkum, P. G., Kriek, M., & Franx, M. 2009, *Nature*, 460, 717
- van Dokkum, P. G., et al. 2010, *ApJ*, 709, 1018
- Varghese, A., Ibata, R., & Lewis, G. F. 2011, *MNRAS*, 417, 198
- Vazdekis, A., Cenarro, A. J., Gorgas, J., Cardiel, N., & Peletier, R. F. 2003, *MNRAS*, 340, 1317
- Vitvitska, M., Klypin, A. A., Kravtsov, A. V., Wechsler, R. H., Primack, J. R., & Bullock, J. S. 2002, *ApJ*, 581, 799
- Weil, M. L., Bland-Hawthorn, J., & Malin, D. F. 1997, *ApJ*, 490, 664
- Woodley, K. A., Gomez, M., Harris, W. E., Geisler, D., & Harris, G. L. H. 2010, *AJ*, 139, 1871
- Woodley, K. A., & Harris, W. E. 2011, *AJ*, 141, 27
- Whiley, I. M., et al. 2008, *MNRAS*, 387, 1253
- Xue, X.-X., Rix, H.-W., Yanny, B., et al. 2011, *ApJ*, 738, 79
- Zemp, M., Diemand, J., Kuhlen, M., Madau, P., Moore, B., Potter, D., Stadel, J., & Widrow, L. 2009, *MNRAS*, 394, 641