

# *The Interstellar Medium*

<http://apod.nasa.gov/apod/astropix.html>

# THE INTERSTELLAR MEDIUM

- Total mass  $\sim 5$  to  $10 \times 10^9$  solar masses of about 5 – 10% of the mass of the Milky Way Galaxy interior to the sun's orbit
- Average density overall about  $0.5 \text{ atoms/cm}^3$  or  $\sim 10^{-24} \text{ g cm}^{-3}$ , but large variations are seen
- Composition - essentially the same as the surfaces of Population I stars, but the gas may be ionized, neutral, or in molecules (or dust)

H I – neutral atomic hydrogen

H<sub>2</sub> - molecular hydrogen

H II – ionized hydrogen

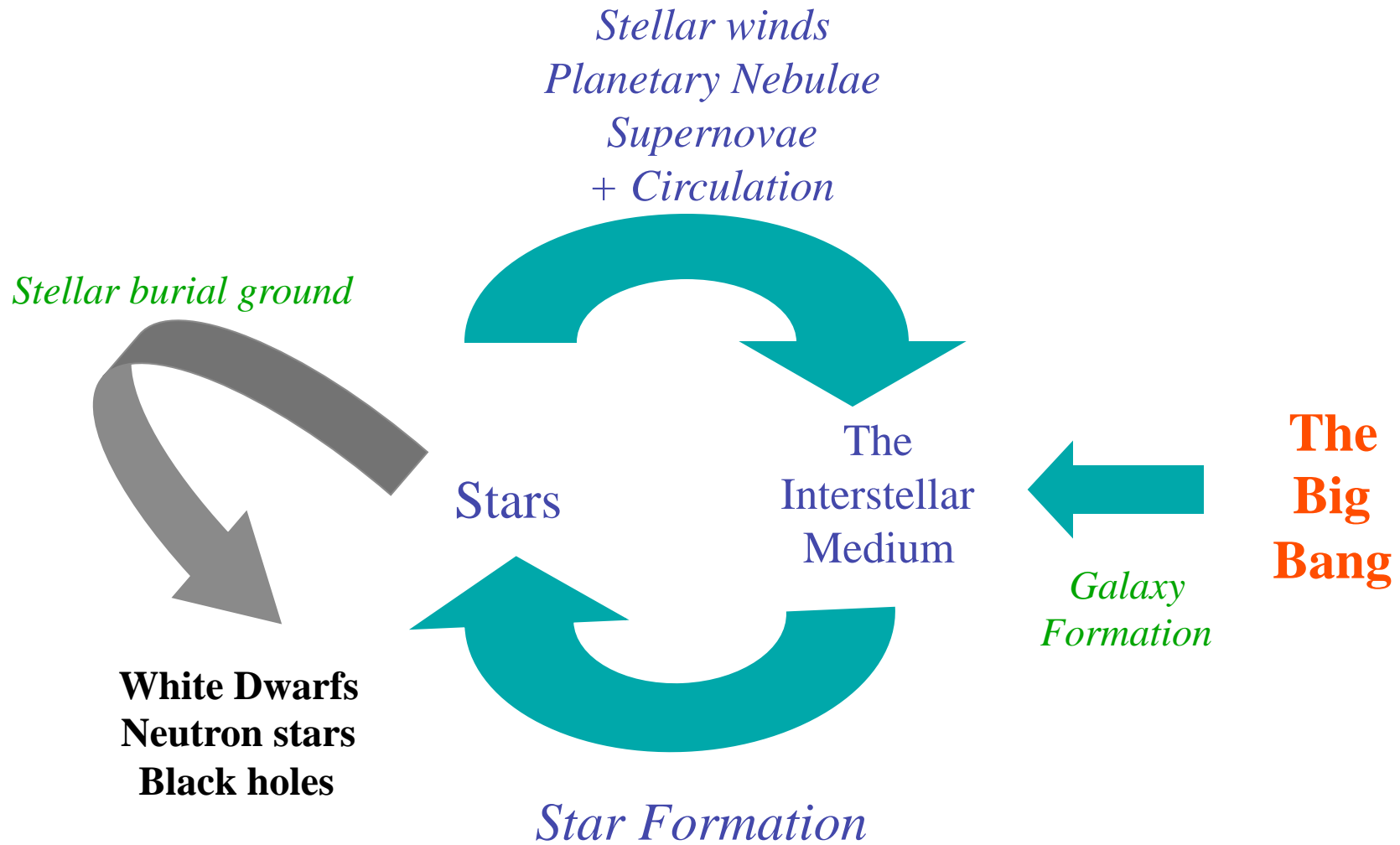
He I – neutral helium

Carbon, nitrogen, oxygen, dust, molecules, etc.

# THE INTERSTELLAR MEDIUM

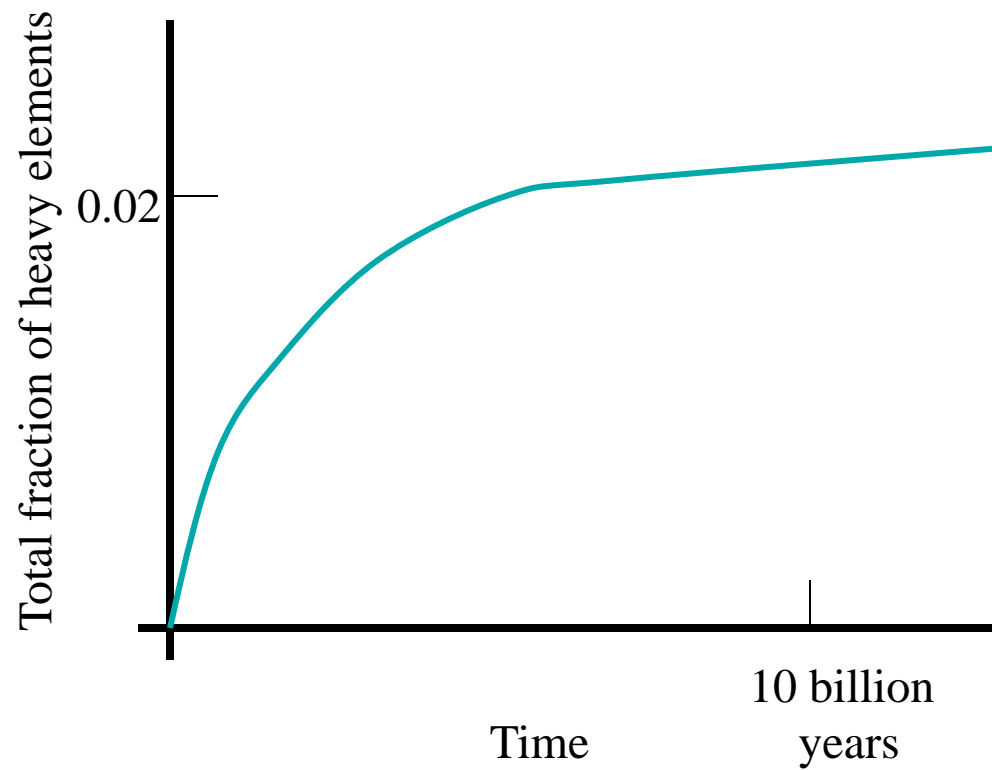
- Energy input – starlight (especially O and B), supernovae, cosmic rays
- Cooling – line radiation and infrared radiation from dust
- Largely concentrated (in our Galaxy) in the disk

# Evolution in the ISM of the Galaxy



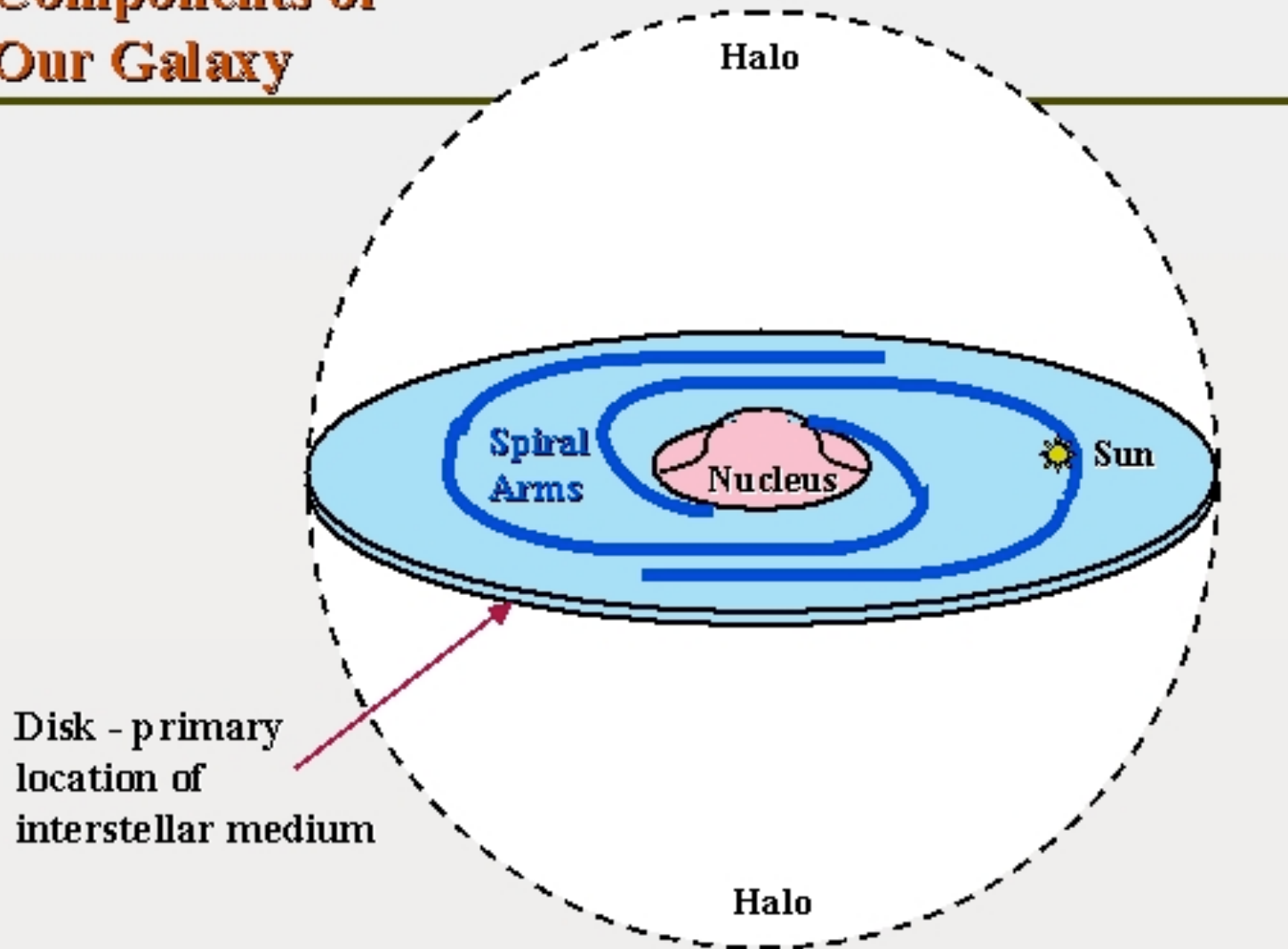
As a result the ISM is continually stirred, heated, and cooled – a dynamic environment

And its composition evolves:



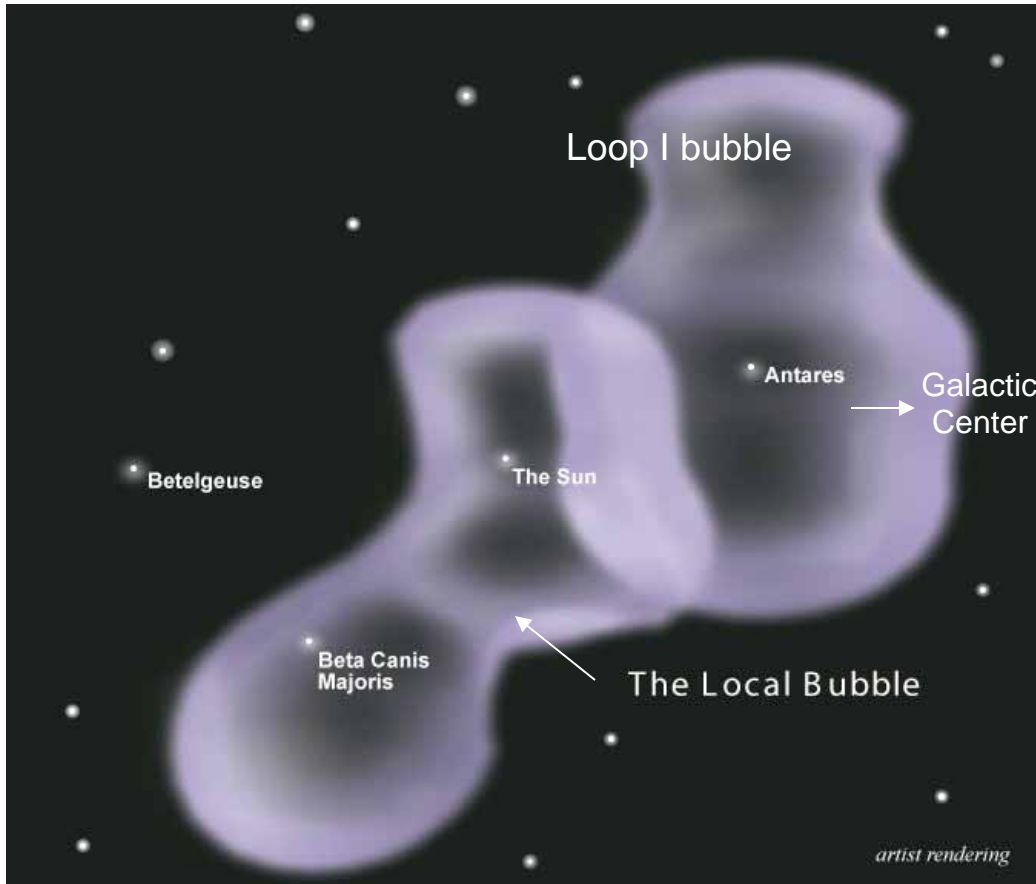
# Structure and Components of Our Galaxy

---



# THE LOCAL BUBBLE

[http://www.daviddarling.info/encyclopedia/L/Local\\_Bubble.html](http://www.daviddarling.info/encyclopedia/L/Local_Bubble.html)



*The “Local Bubble” is a region of low density ( $\sim 0.05 \text{ cm}^{-3}$  and high temperature ( $\sim 10^6 \text{ K}$ ) has been inflated by numerous supernova explosions. It is about 300 light years long and peanut-shaped. Its smallest dimension is in the plane of the Milky Way Galaxy. It is actually open ended, so more like a tube through the galaxy than a bubble.*

The local bubble abuts another bubble - **the Loop I bubble - also known as the Scorpius-Centaurus Association.**

Simulations suggest 14 - 19 supernovae in Sco-Cen during the last 15 My. Such bubbles are common throughout the Galaxy.

## Scorpius-Centaurus Association (the Loop 1 Bubble)

- Nearest *OB association* to sun. Distance 400 to 500 ly  
Contains many of the bright blue stars in the constellations Scorpius, Antares, and Lupus, including as its brightest member, Antares - a 15 solar mass red supergiant. Sometime in the next ~100,000 years Antares will be a supernova.
- Total ~ 1000 - 2000 stars, including most of the brightest stars in the Southern Cross.
- Many supernovae have happened here in the last 15 My
- Has blown an evacuated cavity - the “Loop I bubble” in the interstellar medium next to the Local Bubble.



<http://www.aao.gov.au/images/captions/uks004.html>

Rho Ophiuchi  
(B-star, binary)

Sigma  
Scorpi  
Spectroscopic binary  
B1 – III and B1-V

Antares  
(~500 ly)

Distant globular cluster

© Australian Astronomical Observatory

# ANTARES

- Aka Alpha-Scorpius, a magnitude 1.06 star, about 15 times the mass of the sun
- Luminosity 10,000 times that of the sun; Spectral Class M I,  $T = 3100$  K, not a main sequence star  
(B-V) = 1.83
- Radius about 4 AU
- In a binary with a 7 solar mass main sequence star (Type B4) with a period of 878 years. Separation 4 arc sec
- Name means “Rival to Mars”, sometimes called the “Heart of the Serpent”.



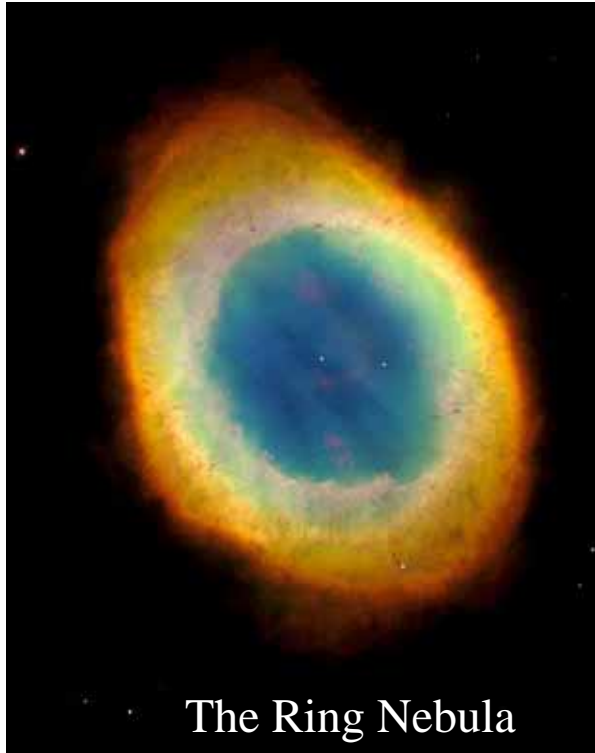
## REFLECTION NEBULAE

Reflection nebulae are clouds of dust which are simply reflecting the light of a nearby star or stars. The energy from the nearby star, or stars, is insufficient to ionize the gas of the nebula to create an emission nebula, but is enough to give sufficient scattering to make the dust visible. Thus, the spectrum shown by reflection nebulae is similar to that of the illuminating stars.

*The “Witchhead Nebula” - about 1000 ly away. situated at Orion’s feet, glows primarily by light reflected from Rigel, just out this field.*

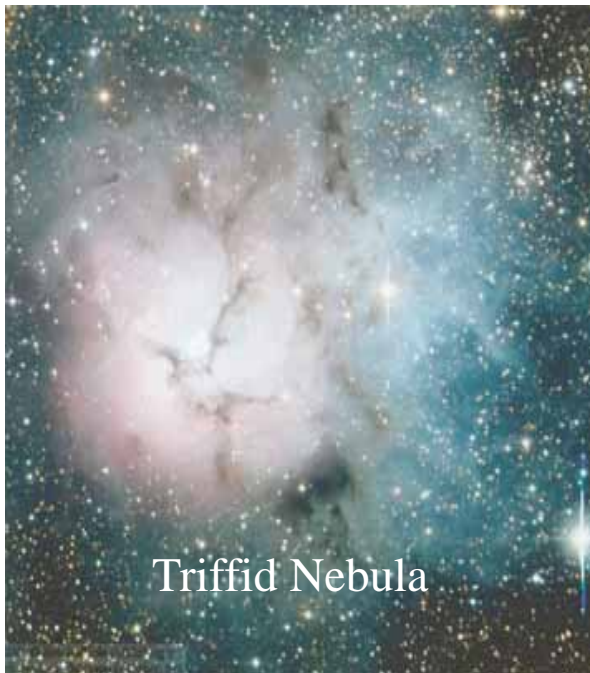


## EMISSION NEBULAE



The Ring Nebula

Emission nebulae are clouds of ionized gas emitting light of various colors. The most common source for ionization are high-energy photons emitted from an embedded hot star.



Trifid Nebula

Examples are planetary nebulae (left – top) and emission nebulae (left – bottom).

## THE LOCAL CLOUD

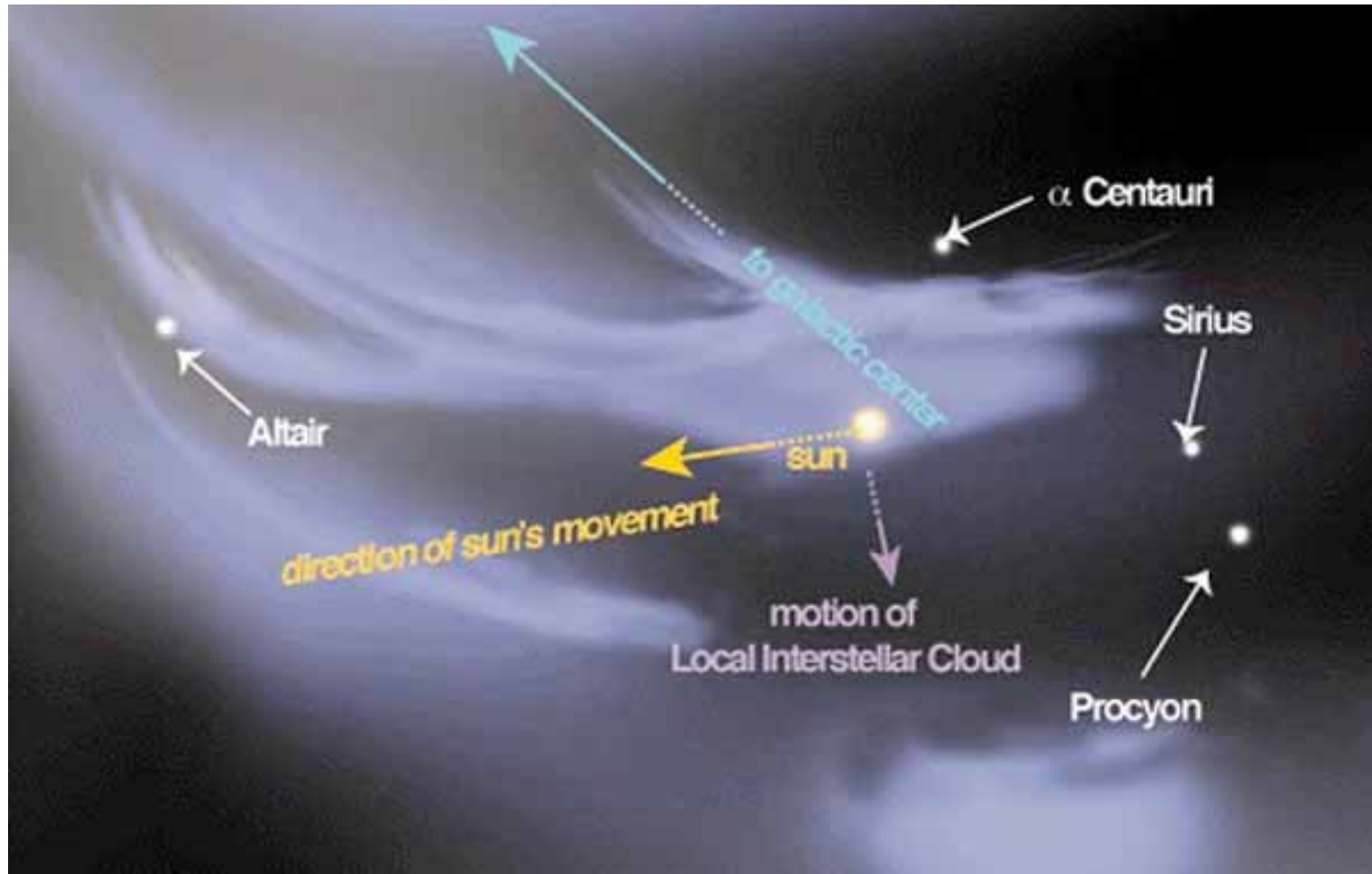
The Local Cloud, sometimes called the Local Fluff, is an interstellar cloud (roughly 30 light years across) through which our solar system is currently moving. The sun entered the Local Cloud at some time between 44,000 and 150,000 years ago and is expected to remain within it for another 10,000 to 20,000 years. The cloud, which is inside the Local Bubble, has a temperature of 7000° K. It's density is about 0.25 atoms per cubic centimeter, much greater than the Local Bubble.

The cloud is flowing outwards from the Scorpius-Centaurus Association. This cloud and many others were probably formed where the Local Bubble and the Loop I Bubble collided.

# Sun and the local cloud

(few tenths solar mass)

← about 10 pc →



distance to Sirius is 2.7 pc

Local Cloud -  $\sim 10$  pc

$\sim 0.25/\text{cm}^3$  7000 K

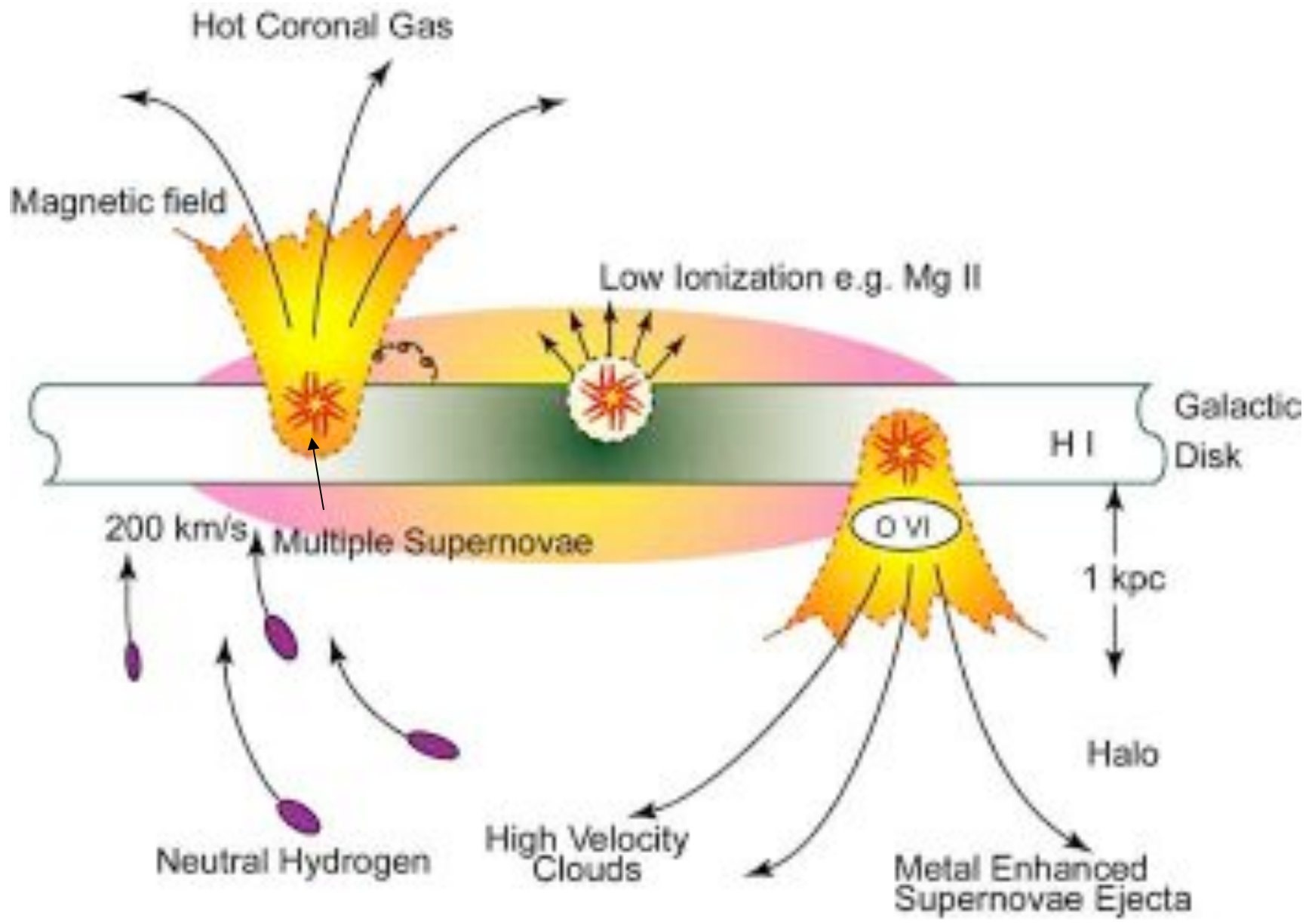
Local Bubble -  $\sim 100$  pc

$\sim 0.01 - 0.05/\text{cm}^3$   $\sim 10^6$  K

Very heterogeneous, the boundaries are not sharp  
and neither is a sphere

*From all this we may correctly infer that the interstellar medium is a clumpy, heterogeneous place with wide variations in temperature and density. The galaxy has inflows and outflows.*





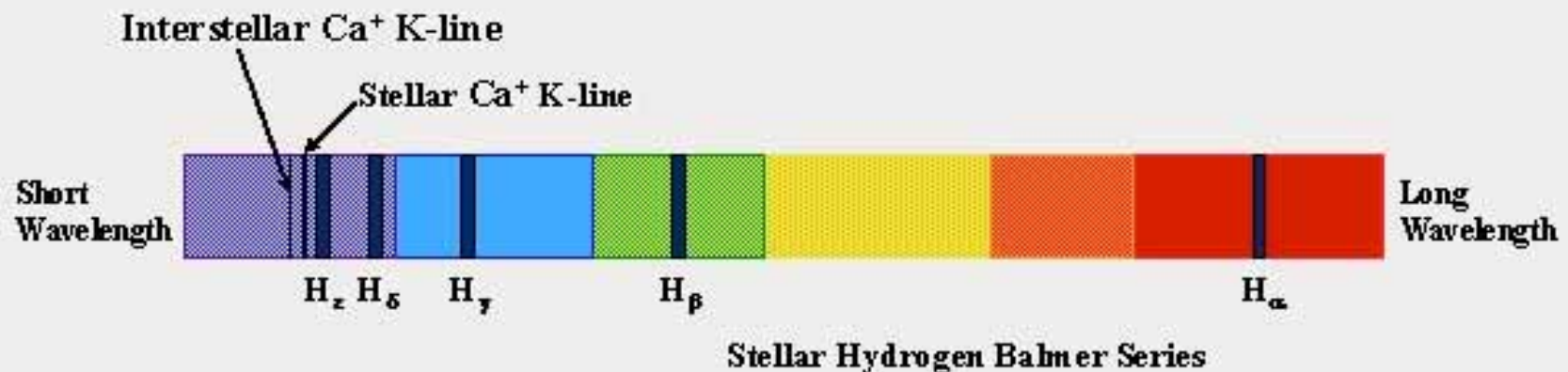
## THE MANY PHASES OF THE INTERSTELLAR MEDIUM

Component	Fractional volume	Scale Height (pc)	Temperature	Density	State of Hydrogen	Observational Technique
<b>Molecular Clouds</b>	< 1% but ~40% of mass	70	10 - 20	$10^2 - 10^6$	H <sub>2</sub>	Radio and infrared (molecules)
<b>Cold Neutral Medium (CNM)</b>	1 - 5%	100 - 300	50 - 100	20 - 50	H I	21 cm
<b>Warm Neutral Medium (WNM)</b>	10 - 20%	300 - 400 (Local cloud)	5000-8000	0.2 - 0.5	H I	21 cm
<b>Warm Ionized Medium (WIM)</b>	20 - 50%	1000	6000 - 12000	0.2 - 0.5	H I, H II	H <sub>α</sub>
<b>H II Regions</b>	<1%	70	8000	$10^2 - 10^4$	H II	H <sub>α</sub>
<b>Coronal Gas (Hot Ionized Medium (HIM))</b>	30 - 70% but <5% of mass	1000 - 3000 (Local Bubble)	$10^6 - 10^7$	$10^{-4} - 10^{-2}$	H II metals also ionized	x-ray ultraviolet

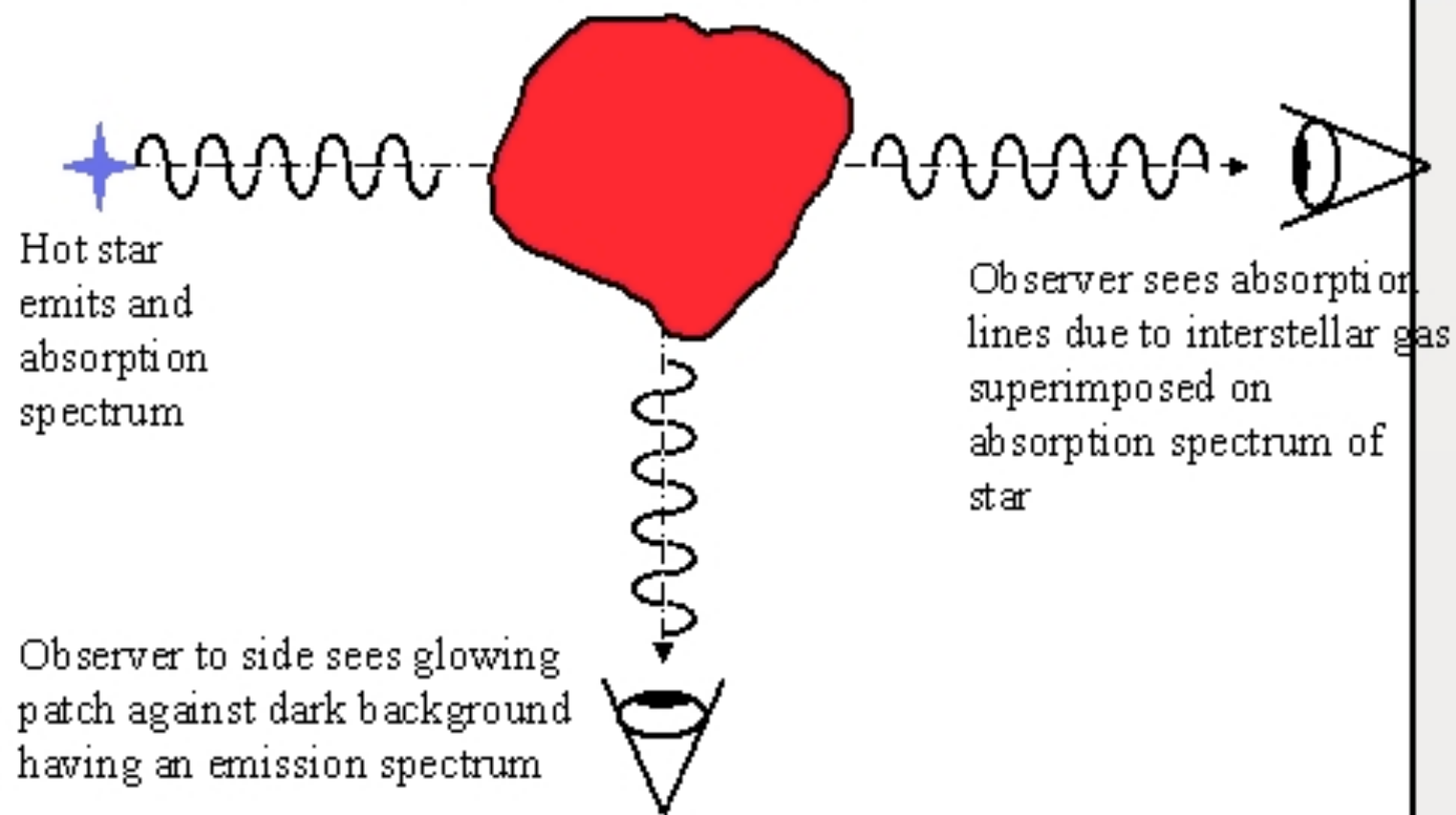
The interstellar medium (hereafter ISM) was first discovered in 1904, with the observation of stationary calcium absorption lines superimposed on the Doppler shifting spectrum of a spectroscopic binary. Since the calcium lines were not changing in wavelength, they could not originate in the stellar atmospheres of the binary star, and so had to be between the telescope and the star. Since no terrestrial source was identified, the calcium had to be *interstellar*.

# Interstellar Lines

- ◆ **Interstellar lines** - absorption lines superimposed on stellar spectrum due to absorption by interstellar gas
  - Typically only a few lines
  - **Example:** Ca II K-line superimposed on spectrum of B star



Interstellar gas absorbs and re-emits or scatters certain wavelengths



Hot star emits and absorption spectrum

Observer sees absorption lines due to interstellar gas superimposed on absorption spectrum of star

Observer to side sees glowing patch against dark background having an emission spectrum

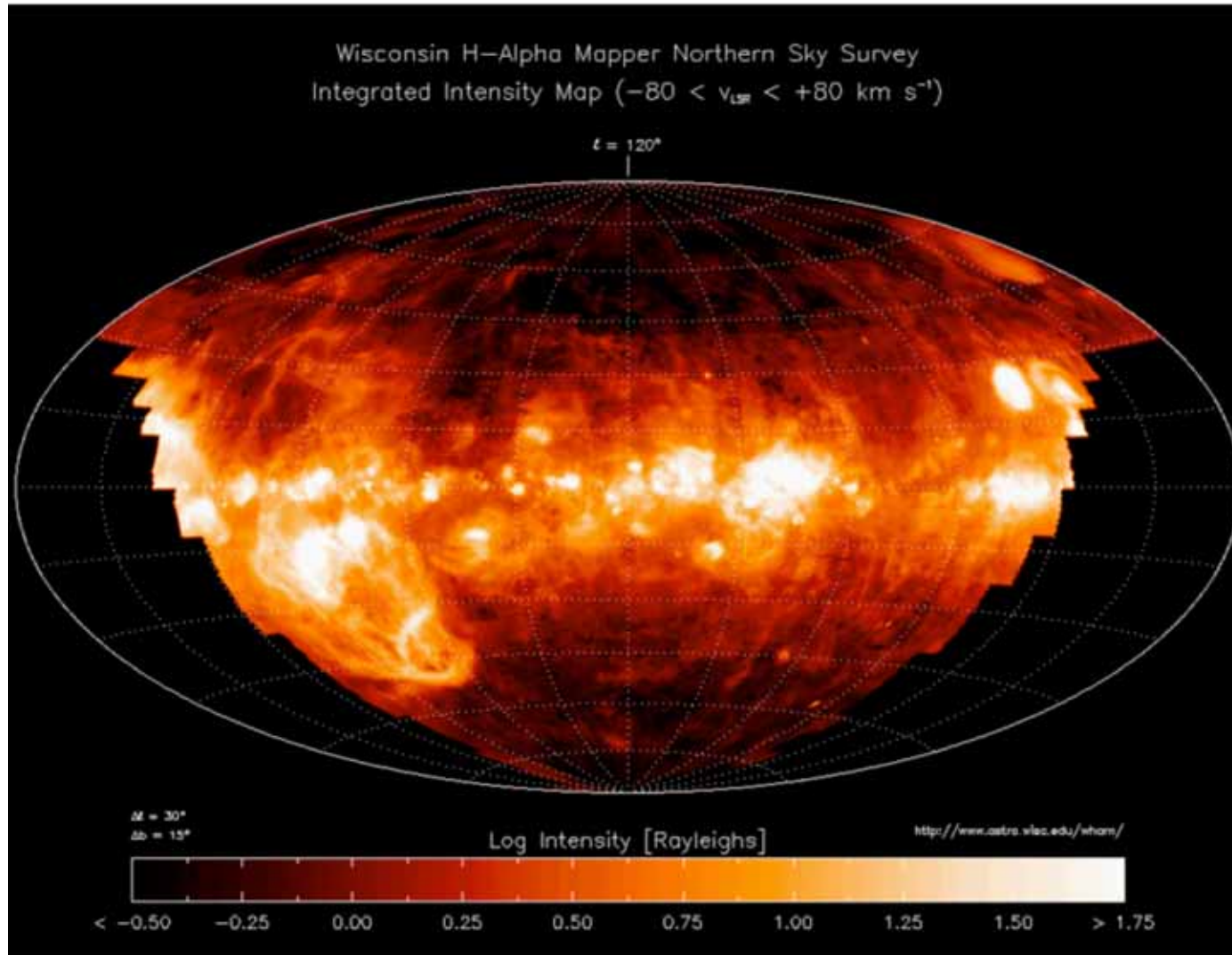
## THE NEUTRAL AND WEAKLY IONIZED MEDIUM (e.g., local cloud)

Component	Fractional volume	Rough Scale Height (pc)	Temperature	Density	State of Hydrogen	Observational Technique
<b>Molecular Clouds</b>	<b>&lt; 1% but ~40% of mass</b>	<b>70</b>	<b>10 - 20</b>	<b><math>10^2 - 10^6</math></b>	<b>H<sub>2</sub></b>	<b>Radio and infrared (molecules)</b>
<b>Cold Neutral Medium (CNM)</b>	<b>1 - 5%</b>	<b>100 - 300</b>	<b>50 - 100</b>	<b>20 - 50</b>	<b>H I</b>	<b>21 cm</b>
<b>Warm Neutral Medium (WNM)</b>	<b>10 - 20%</b>	<b>300 - 400</b>	<b>5000-8000</b>	<b>0.2 - 0.5</b>	<b>H I</b>	<b>21 cm</b>
<b>Warm Ionized Medium (WIM)</b>	<b>20 - 50%</b>	<b>1000</b>	<b>6000 - 12000</b>	<b>0.2 - 0.5</b>	<b>H I, H II</b>	<b>H<sub>α</sub></b>
<b>H II Regions</b>	<b>&lt;1%</b>	<b>70 around stars</b>	<b>8000</b>	<b><math>10^2 - 10^4</math></b>	<b>H II</b>	<b>H<sub>α</sub></b>
<b>Coronal Gas (Hot Ionized Medium (HIM))</b>	<b>30 - 70% but &lt; 5% of mass</b>	<b>1000 - 3000</b>	<b><math>10^6 - 10^7</math></b>	<b><math>10^{-4} - 10^{-2}</math></b>	<b>H II metals also ionized</b>	<b>x-ray ultraviolet</b>

## **THE NEUTRAL AND WEAKLY IONIZED MEDIA (about one-half the mass and volume of the ISM)**

- Neutral (H I) and partially ionized hydrogen
- Study with 21 cm (H I) and emission lines (H I + H II)
- Scale height greater for hotter gas – 100 – 1000 pc
- Cooler gas often found in clouds. Not actively forming stars. Rough pressure equilibrium.
- Peaks 8 – 13 kpc from galactic center, i.e. outside the sun's orbit

## WARM IONIZED MEDIUM



Distribution of ionized hydrogen (H II) in the local vicinity as viewed in Balmer alpha. Warm ionized medium.



## THE CORONAL GAS MEDIUM (e.g., the local bubble)

Component	Fractional volume	Scale Height (pc)	Temperature	Density	State of Hydrogen	Observational Technique
<b>Molecular Clouds</b>	< 1% but ~40% of mass	70	10 - 20	$10^2 - 10^6$	H <sub>2</sub>	Radio and infrared (molecules)
<b>Cold Neutral Medium (CNM)</b>	1 - 5%	100 - 300	50 - 100	20 - 50	H I	21 cm
<b>Warm Neutral Medium (WNM)</b>	10 - 20%	300 - 400	5000-8000	0.2 - 0.5	H I	21 cm
<b>Warm Ionized Medium (WIM)</b>	20 - 50%	1000	6000 - 12000	0.2 - 0.5	H I, H II	H <sub>α</sub>
<b>H II Regions</b>	<1%	70	8000	$10^2 - 10^4$	H II	H <sub>α</sub>
<b>Coronal Gas (Hot Ionized Medium (HIM))</b>	30 - 70% but <5% of mass	1000 - 3000	$10^6 - 10^7$	$10^{-4} - 10^{-2}$	H II metals also ionized	x-ray ultraviolet

## *Coronal Gas Regions*

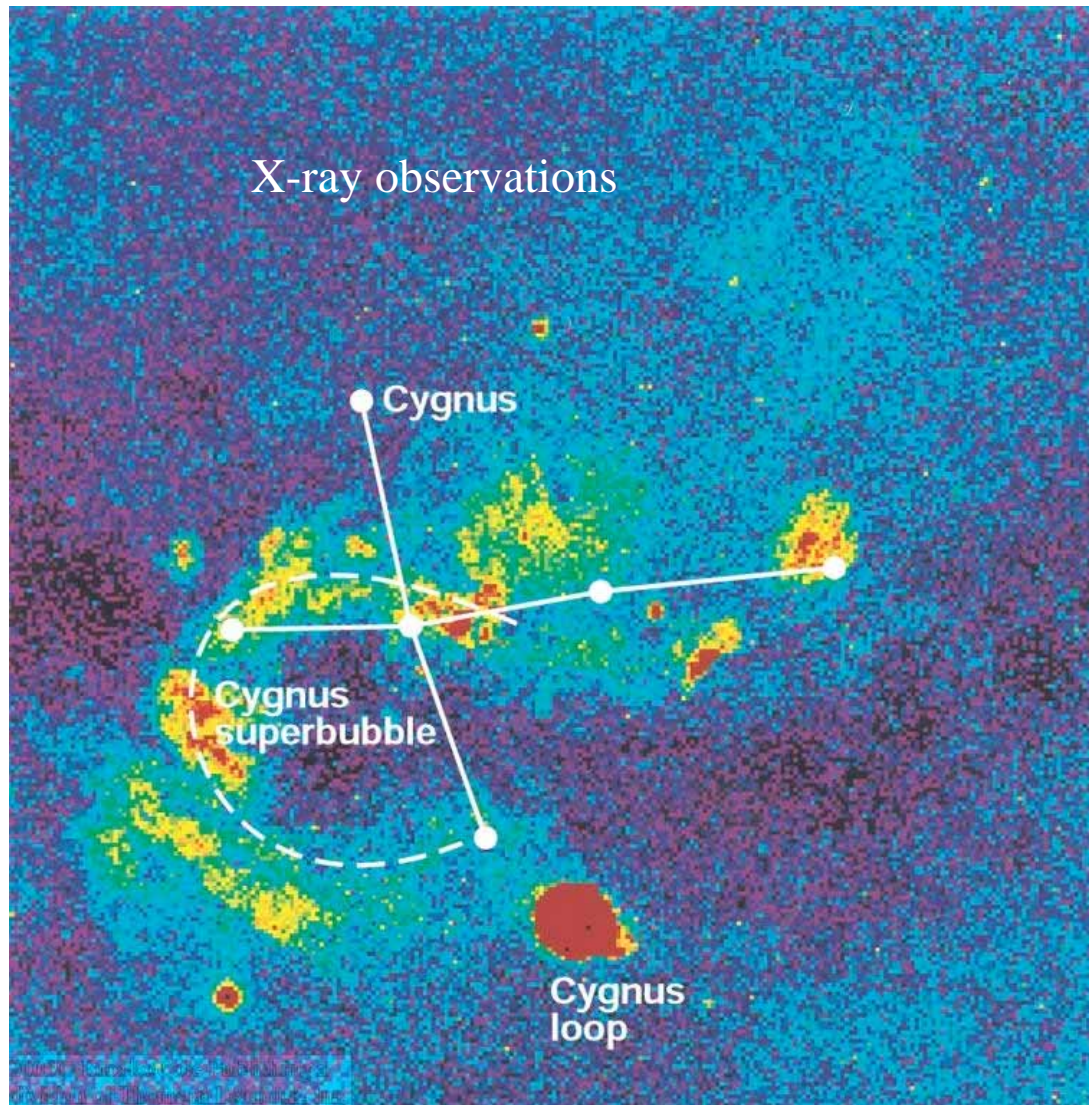
---

- ◆ **Coronal gas regions** - pockets of very hot, very low density, gas that were probably produced in supernova explosions
  - Temperatures up to one million degrees Kelvin
  - Densities as low as  $10^{-4}$  particles/cm<sup>3</sup>
  - Sizes of hundreds of light years
- ◆ Coronal gas regions extend out of disk and into corona, somewhat like a fountain, with gas falling back into disk
- ◆ Coronal gas regions constitute about 5% of mass of interstellar medium

## ***Coronal Gas - continued***

- Large fraction of the volume (~50%).
- Emission lines in the ultraviolet, e.g., O VI  
X-rays
- Found in vicinity of supernova remnants and above and below disk. Heated by supernova shocks? *uv* light of O stars?

# CORONAL GAS



Called “coronal gas” because of its similarity to solar coronal gas, but very different origin.

Probably originates from supernova explosions and winds from very hot stars

Also recall the “Local Bubble”

## H II REGIONS

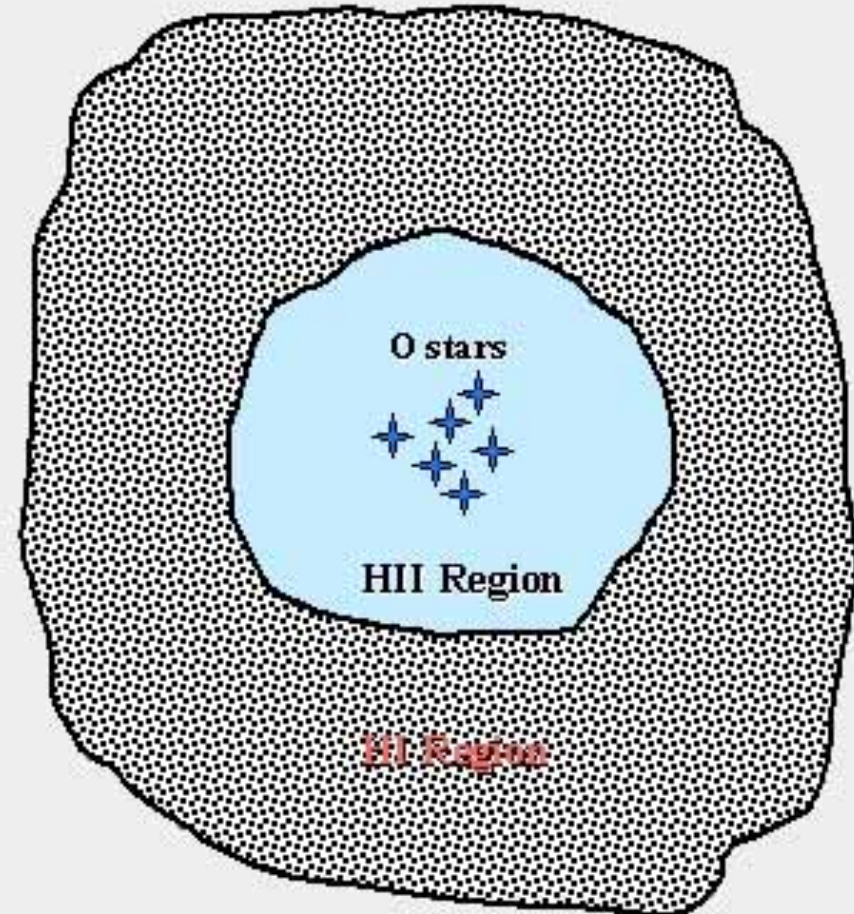
Component	Fractional volume	Scale Height (pc)	Temperature	Density	State of Hydrogen	Observational Technique
<b>Molecular Clouds</b>	< 1% but ~40% of mass	70	10 - 20	$10^2 - 10^6$	H <sub>2</sub>	Radio and infrared (molecules)
<b>Cold Neutral Medium (CNM)</b>	1 - 5%	100 - 300	50 - 100	20 - 50	H I	21 cm
<b>Warm Neutral Medium (WNM)</b>	10 - 20%	300 - 400	5000- 8000	0.2 - 0.5	H I	21 cm
<b>Warm Ionized Medium (WIM)</b>	20 - 50%	1000	6000 - 12000	0.2 - 0.5	H I, H II	H <sub>α</sub>
<b>H II Regions</b>	<1%	70	8000	$10^2 - 10^4$	H II	H <sub>α</sub>
<b>Coronal Gas (Hot Ionized Medium (HIM))</b>	30 - 70% but <5% of mass	1000 - 3000	$10^6 = 10^7$	$10^{-4} - 10^{-2}$	H II metals also ionized	x-ray ultraviolet



# *HII Regions*

---

- ◆ Interstellar matter excited and ionized by ultraviolet photons from hot O and B (earlier than B3) stars
- ◆ Spectrum is emission
- ◆ HII region surrounded by cooler, denser, HI region



## ***H II Regions***

- About 700 in our Galaxy
- Ionized by intense uv-flux from stars within, especially O stars
- Detected in radio from high n transitions in hydrogen. Also optical emission in Balmer and Lyman series.
- Appear reddish, sometime with a greenish tinge from oxygen emission lines.  $T \sim 10^4$  K. Highly variable density from a few atoms per cc to a million. May contain many stars.
- Most abundant between 4 to 8 kpc and in spiral arms of the Milky Way. Trace regions of recent star formation.

## *H II Regions - continued*

- Brightest is less than a million years old.
- Often have molecular clouds at their boundaries
- Colorful, but not a major part of the Galaxy' s mass or volume





Messier 51



The Great Nebula in Orion. An illuminated portion of a nearby (1300 ly) giant molecular cloud. The field of view here is 32 arc min. Each arc min at this distance is about 0.4 ly.



A better resolved image of the Trapezium from the Hubble Space Telescope.

John Balley et al (1997)





Lagoon Nebula – in Sagittarius – 5000 ly away – spans 90 x 40 arc min and 130 by 60 light years. Another H II region on the boundary of a molecular cloud (like Orion)

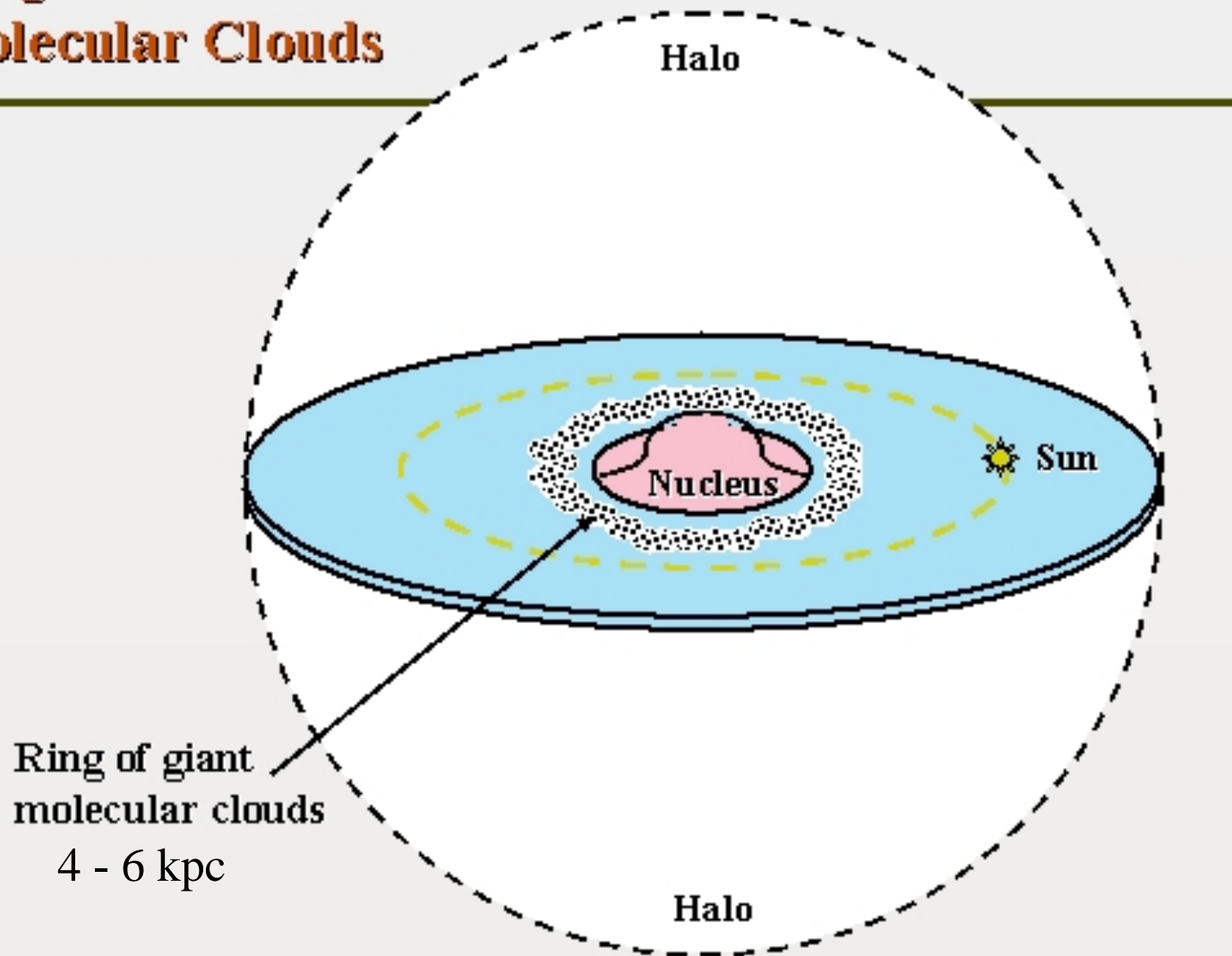
## PHASES OF THE INTERSTELLAR MEDIUM

Component	Fractional volume	Scale Height (pc)	Temperature	Density	State of Hydrogen	Observational Technique
Molecular Clouds	< 1% but ~40% of mass	70	10 - 20	$10^2 - 10^6$	H <sub>2</sub>	Radio and infrared (molecules)
Cold Neutral Medium (CNM)	1 - 5%	100 - 300	50 - 100	20 - 50	H I	21 cm
Warm Neutral Medium (WNM)	10 - 20%	300 - 400	5000 - 8000	0.2 - 0.5	H I	21 cm
Warm Ionized Medium (WIM)	20 - 50%	1000	6000 - 12000	0.2 - 0.5	H II	H <sub>α</sub>
H II Regions	<1%	70	8000	$10^2 - 10^4$	H II	H <sub>α</sub>
Coronal Gas (Hot Ionized Medium (HIM))	30 - 70% but <5% of mass	1000 - 3000	$10^6 - 10^7$	$10^{-4} - 10^{-2}$	H II metals also ionized	x-ray ultraviolet

## ***Molecular Hydrogen (H<sub>2</sub>)***

- Traced by the radio emission of CO which is found in the same (cold, dense) conditions with a near constant proportionality to molecular hydrogen. H<sub>2</sub> itself is not observable in the radio.
- Mostly concentrated in a ring around the center of the Galaxy interior to the sun's orbit at 4 to 6 kpc
- Mostly clumped into clouds ranging in mass from several solar masses to 10<sup>6</sup> solar masses and sizes from less than a ly to 600 ly

# Ring of Giant Molecular Clouds



# MOLECULAR CLOUDS

- In the cool dense gas, dust forms and accumulates icy mantles
- This dust shields molecules from destruction by uv light
- Molecules emit radio and the dust emits IR, keeping the cloud cool.
- About 40% of the mass of the ISM is molecular clouds (but a small fraction of the volume)

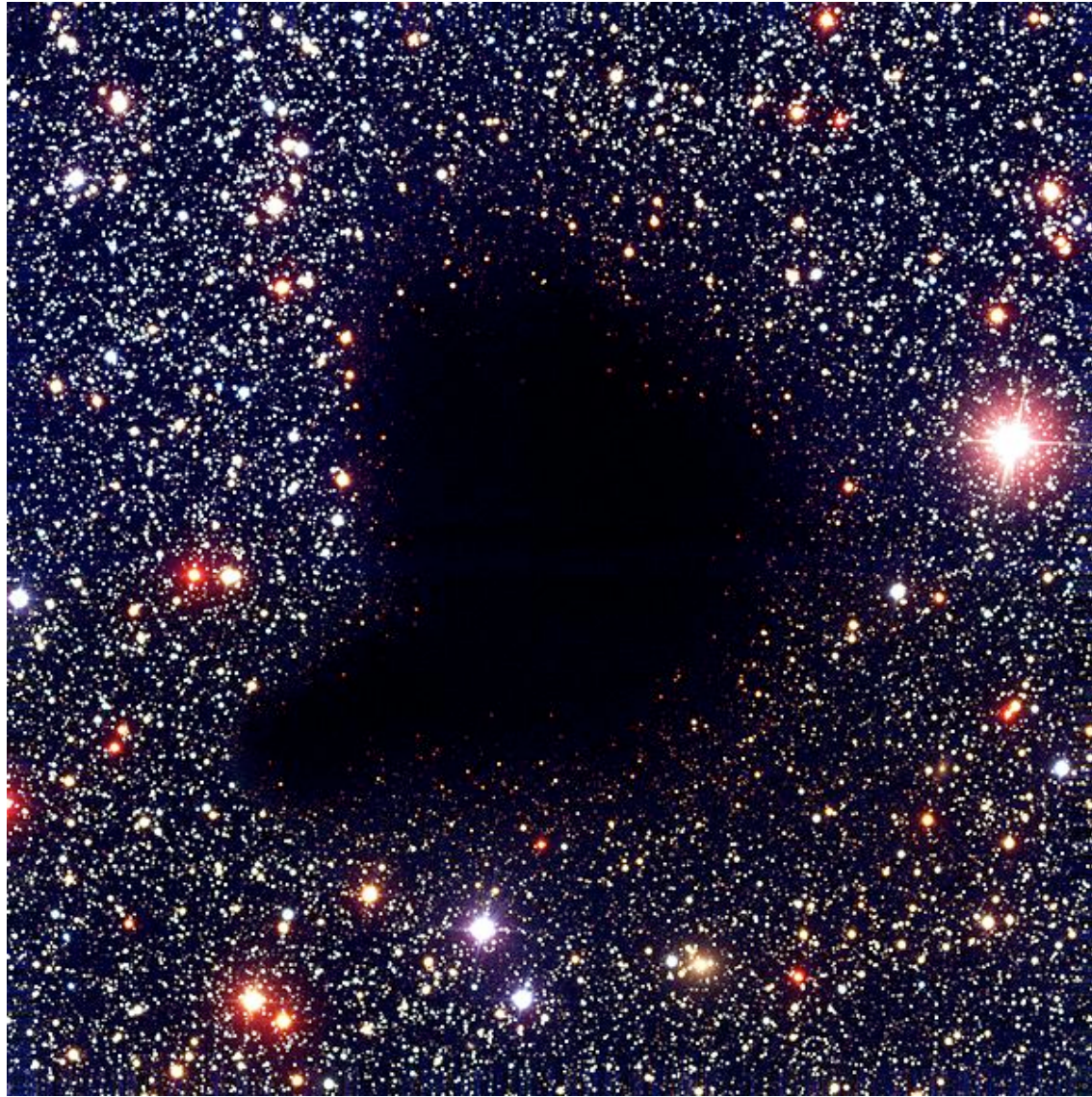




## Molecular Clouds (continued)

[http://en.wikipedia.org/wiki/Molecular\\_cloud](http://en.wikipedia.org/wiki/Molecular_cloud)

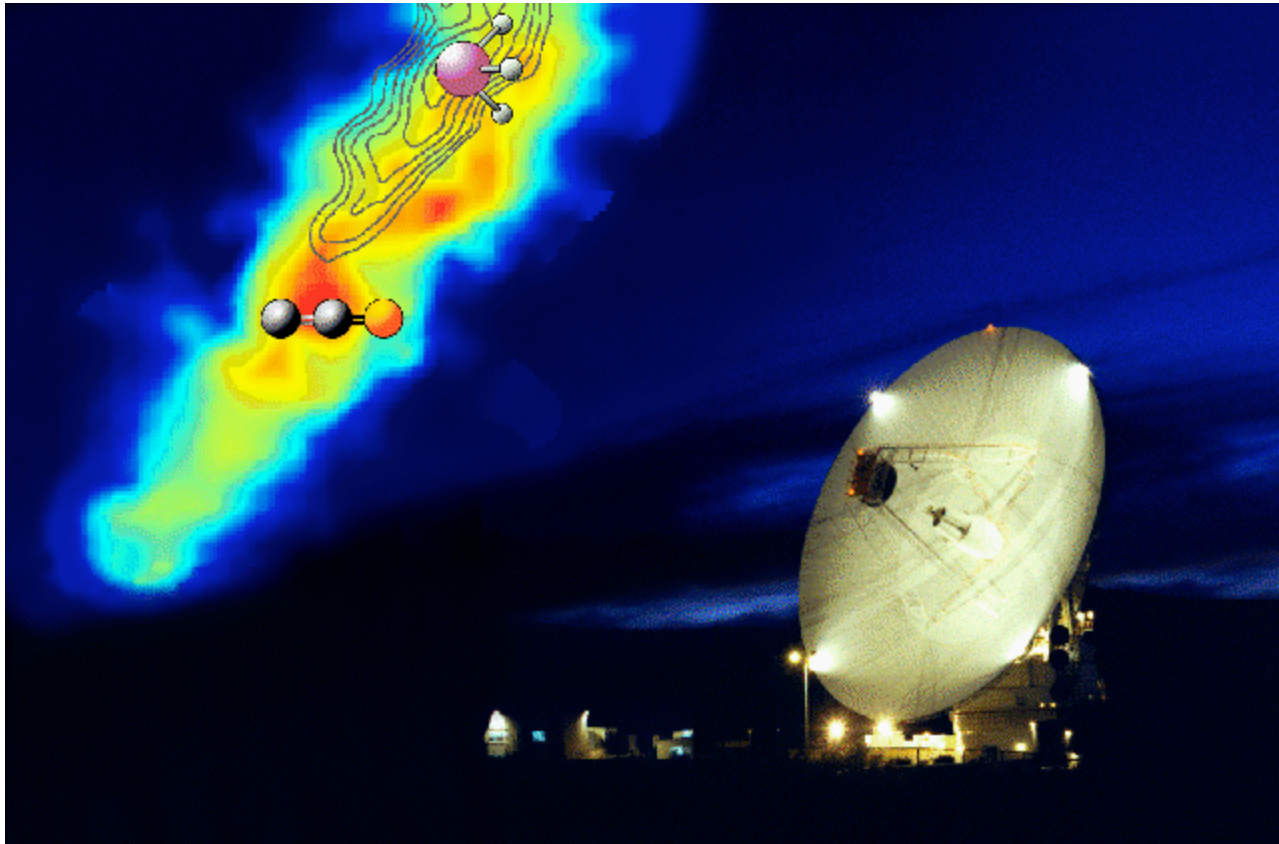
- Live  $\sim 10^6 - 10^7$  years
- Cold, dense, definitely regions of active star formation
- *Giant* molecular clouds may have masses  $M \sim 10^3 - 10^6$  solar masses. [Taurus a few thousand solar masses; Orion 200,000] and sizes of  $10^1$  s of parsecs (Orion  $\sim 70$  pc - stretching several degrees from Belt to sword)
- Smaller molecular clouds are called “Bok globules”, with highly variable masses  $\sim 1 - 100$  solar masses. Found near H II regions.  $\sim$  light years in size.
- Dust 0.1% to 1% of the mass.
- Origin uncertain. May be formed by compression of ISM around a large OB association.



Barnard 68 is a Bok globule 410 ly away (one of the closest) size about 12,000 AU (similar to Oort cloud in our solar system)  $T = 16$  K, about two solar masses. Coldest matter in universe. Definitely forming stars.

129 different molecules had been detected in space by 2006.  
Most are “organic”.  $\text{HC}_{11}\text{N}$  is the heaviest.

<http://www.cv.nrao.edu/~awootten/allmols.html>



<http://dsnra.jpl.nasa.gov/IMS/>



## *Selected Interstellar Molecules*

<b>Symbol</b>	<b>Molecule</b>	<b>Symbol</b>	<b>Molecule</b>
<b>H<sub>2</sub></b>	<b>molecular hydrogen</b>	<b>H<sub>2</sub>S</b>	<b>hydrogen sulfide</b>
<b>C<sub>2</sub></b>	<b>diatomic carbon</b>	<b>N<sub>2</sub>O</b>	<b>nitrous oxide</b>
<b>CN</b>	<b>cyanogen</b>	<b>H<sub>2</sub>CO</b>	<b>formaldehyde</b>
<b>CO</b>	<b>carbon monoxide</b>	<b>C<sub>2</sub>H<sub>2</sub></b>	<b>acetylene</b>
<b>NO</b>	<b>nitric oxide</b>	<b>NH<sub>3</sub></b>	<b>ammonia</b>
<b>OH</b>	<b>hydroxyl</b>	<b>HCO<sub>2</sub>H</b>	<b>formic acid</b>
<b>NaCl</b>	<b>sodium chloride</b>	<b>CH<sub>4</sub></b>	<b>methane</b>
<b>HCN</b>	<b>hydrogen cyanide</b>	<b>CH<sub>3</sub>OH</b>	<b>methyl alcohol</b>
<b>H<sub>2</sub>O</b>	<b>water</b>	<b>CH<sub>3</sub>CH<sub>2</sub>OH</b>	<b>ethyl alcohol</b>

In 2003 an amino acid, glycine, was detected in a molecular cloud

## Nearest Example of a Giant Molecular Cloud: Orion

[http://www.daviddarling.info/encyclopedia/O/Orion\\_Complex.html](http://www.daviddarling.info/encyclopedia/O/Orion_Complex.html)

- Size 70 pc (diameter)
- distance ~ 450 pc
- M ~ 200,000 solar masses
- Age ~12 My
- Evidence for thousands of embedded young stars. Best seen in infrared.
- Spitzer IR telescope in 2006 found evidence for 2300 “dusty disks” around young stars in the Orion complex - planetary systems in the making.

(HST 1997)



The *Trifid Nebula*, 3000 parsecs away in the constellation Sagittarius, is also a molecular cloud where new stars are being born. Here the bright emission of the central stars is eroding the surroundings of several nearby stars about 8 light years away. Note the nebula is quite dusty. The stalk has survived because at its tip there is still gas that is dense enough to resist being boiled away by the nearby bright stars.



Star birth in the Eagle Nebula, 7000 light years away in the constellation Serpens.

This is a column of cool molecular hydrogen and dust that is an incubator for new stars. Each finger-like protrusion is larger than our solar system.

This “pillar of creation” is being slowly eroded away by the ultraviolet light of nearby young stars.

**Star-Birth Clouds • M16**

**HST • WFPC2**

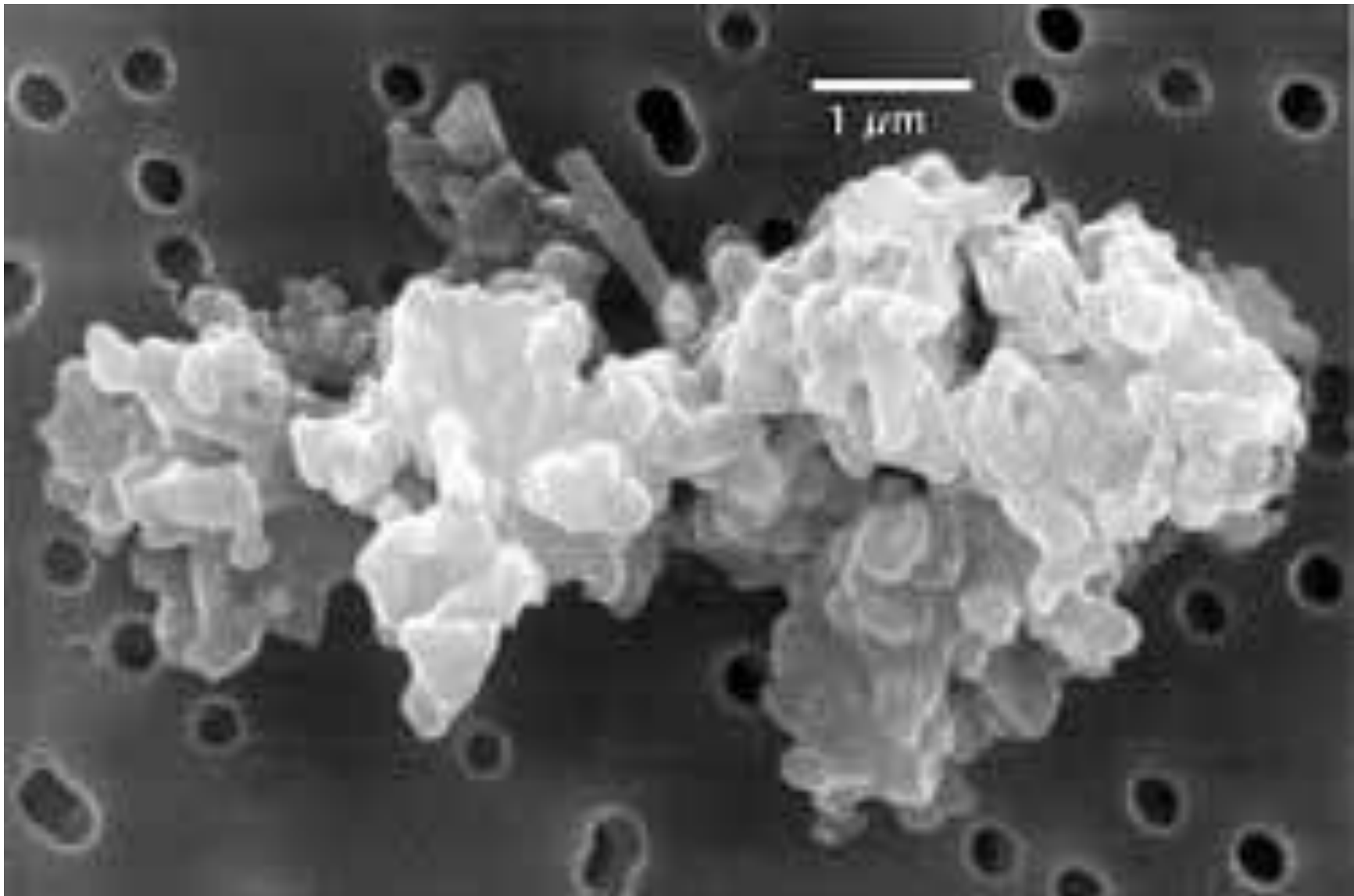
PRC95-44b • ST Sci OPO • November 2, 1995  
J. Hester and P. Scowen (AZ State Univ.), NASA



# *Interstellar Dust*

---

- ◆ **Interstellar dust** - microscopic solid grains containing large numbers of atoms that are concentrated in large dark interstellar clouds along plane of Galaxy
  - About 1% of mass of interstellar medium
  - Source of strong extinction of radiation along plane of Galaxy
  - Grain size is about  $5 \times 10^{-5}$  cm or about wavelength of visible light
  - Composition, about  $100 \times 10^6$  atoms/grain, graphite, iron particles, silicon carbide, silicates, frozen gases (ices)



Interplanetary dust in our solar system

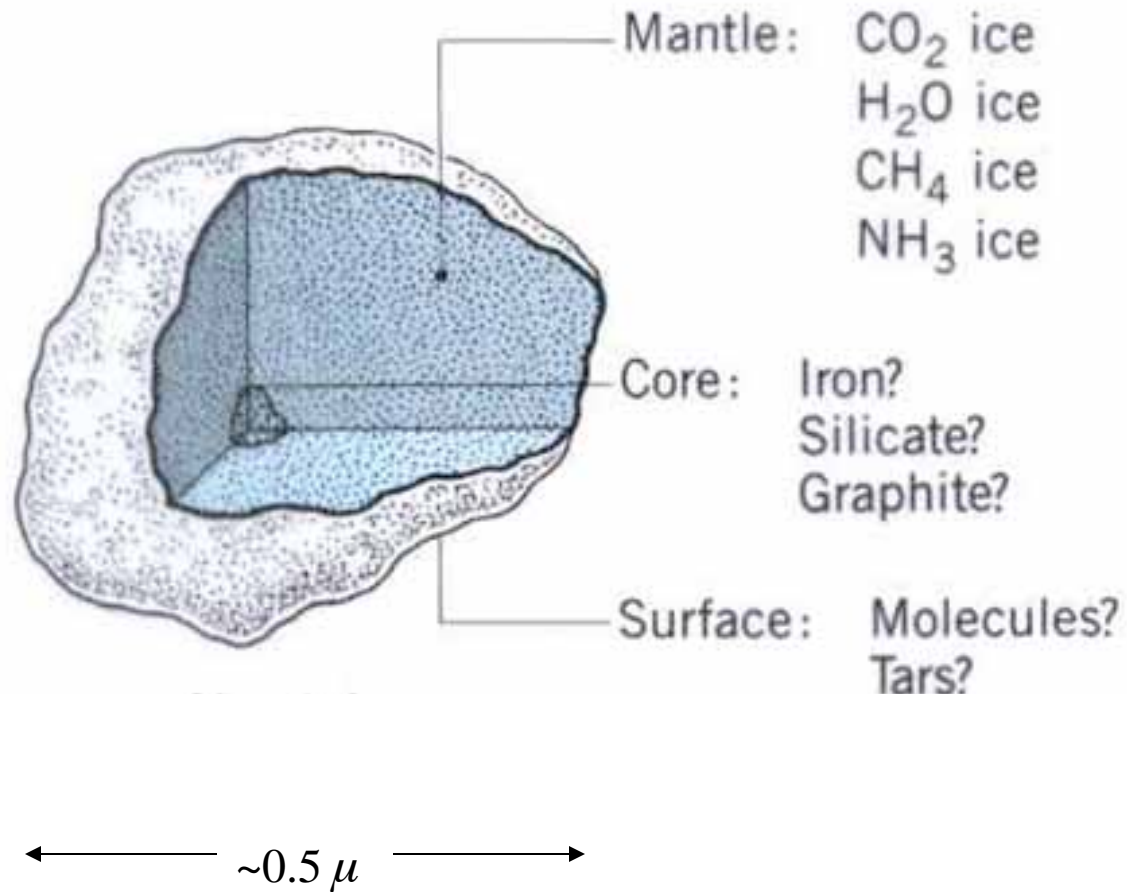
Interstellar dust is smaller ( $< 1 \text{ micron} = 10000 \text{ \AA}$ )

[http://en.wikipedia.org/wiki/Cosmic\\_dust](http://en.wikipedia.org/wiki/Cosmic_dust)

Andromeda galaxy in an infrared  
image taken by the Spitzer Space Telescope



In a molecular cloud dust grains accrete icy mantles



$$1 \text{ m} = 10^{-6} \text{ m} = 10^{-4} \text{ cm}$$

large variation in grain sizes but all very small



# *Extinction By Interstellar Dust*

---

- ◆ **Interstellar extinction** - distant stars appear fainter and reddened due to absorption of photons by interstellar dust grains

- Grains better absorbers of short wavelength photons than long wavelength photons

Absorption



Ultraviolet Visible Infrared

- Loss of light is about 2 magnitudes for every 1000 parsecs radiation traverses interstellar dust
- $10^{11}$  photons from center of our Galaxy, traverse about 30,000 ly of interstellar dust, 1 photon reaches Sun