

***Binary Evolution  
Novae, Supernovae,  
and X-ray Sources***

<http://apod.nasa.gov/apod/>

<http://www.space.com/32150-farthest-galaxy-smashes-cosmic-distance-record.html>

# The Algol Mystery

- Algol is a double-lined eclipsing binary system with a period of about 3 days (very short). The two stars are:

Star A: B8,  $3.4M_{\odot}$  main-sequence star

Star B: G5,  $0.8M_{\odot}$  'subgiant' star

What is wrong with this picture?

(very short period is a clue)

# Algol

- The more massive star (A) should have left the main sequence and started up the RGB before the less massive star (B).
- What is going on here?
- The key is the short-period orbit and the evolved state of star B.

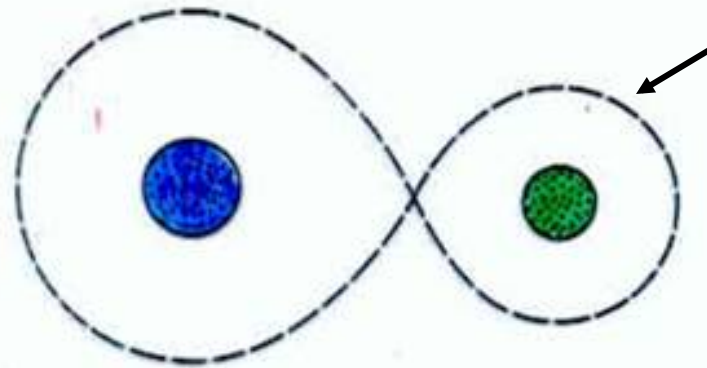
# Mass Transfer in Binaries

- In the case of Algol, Star B, which initially had a mass of  $3.0 M_{\odot}$  transferred  $2.2 M_{\odot}$  of material to Star A, which initially was  $1.2 M_{\odot}$ , after it became a red giant.

Star A:  $1.2 M_{\odot} \rightarrow 3.4 M_{\odot}$  (main sequence)

Star B:  $3.0 M_{\odot} \rightarrow 0.8 M_{\odot}$  (red giant)

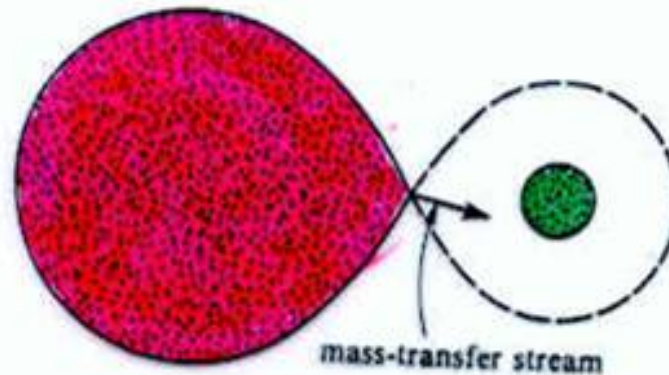
# Binary Star Evolution



surface of equal total potential energy – including rotation

(a) detached binary

“Roche Lobe”



mass-transfer stream

(b) semidetached binary



*Mass exchange can greatly alter stellar evolution.* It can change the composition we see on the surface of a star and can alter the lifetime and luminosity of both stars. Also ...

- When a massive star becomes a red giant, it may spill its H-envelope onto its companion changing the evolution of both. E.g.

### Type Ib supernova

- After the (initially) more massive star has died, interesting systems can be created in which one “star” is a white dwarf, neutron star, or black hole, with another more ordinary star spilling matter onto it.

Classical novae

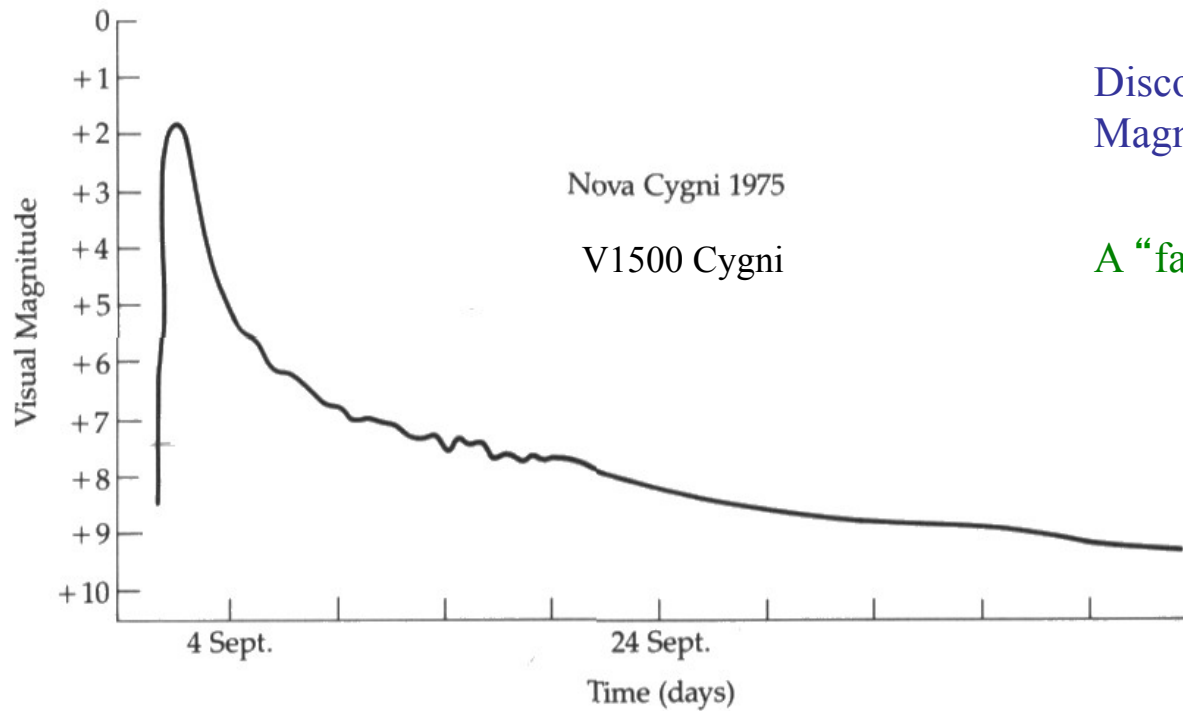
Type Ia supernovae

X-ray binaries

# CLASSICAL NOVAE

- Classical novae are thought to occur about 30 to 60 times a year in the Milky Way, but only about 10 are discovered each year.
- $L \sim 10^{38} \text{ erg s}^{-1}$  for several days to months. About  $10^5$  times the luminosity of the sun, but  $\sim 10^5$  times less luminous than the brightest supernova, but  $10^5$  more luminous than the sun
- Recur – in theory - but the recurrence time scale may be very long - typically tens of thousands of years
- Some mass is ejected, but the amount is small  $10^{-6} - 10^{-4}$  solar masses. The velocities are slower than supernovae – 100' s to perhaps  $1000 \text{ km s}^{-1}$
- Show emission lines of H, He, C, N, O, Ne, and Mg





Discovery Aug 29, 1975  
Magnitude 3.0

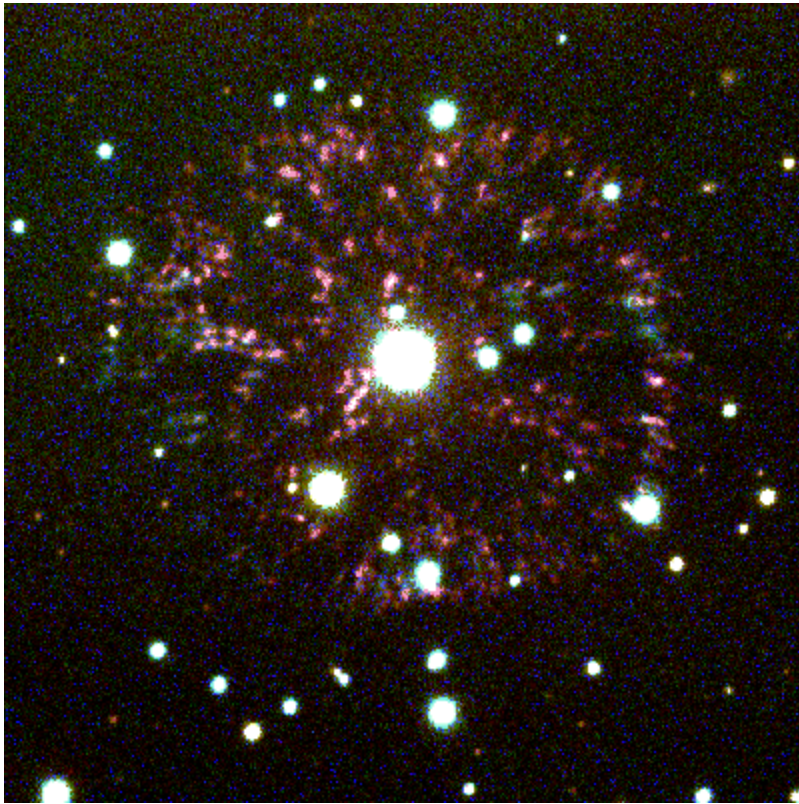
A "fast" nova

# Novae



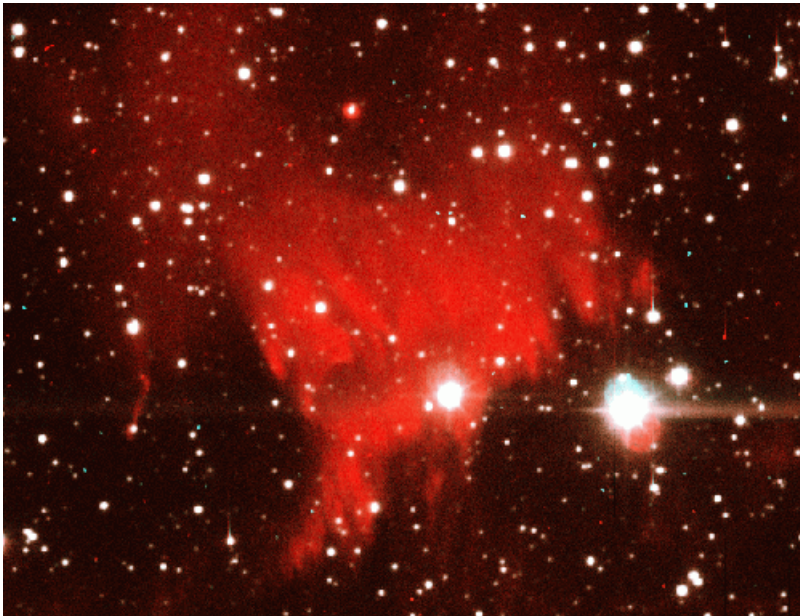
- Nova Vel 1998 (3rd magnitude)

# Novae



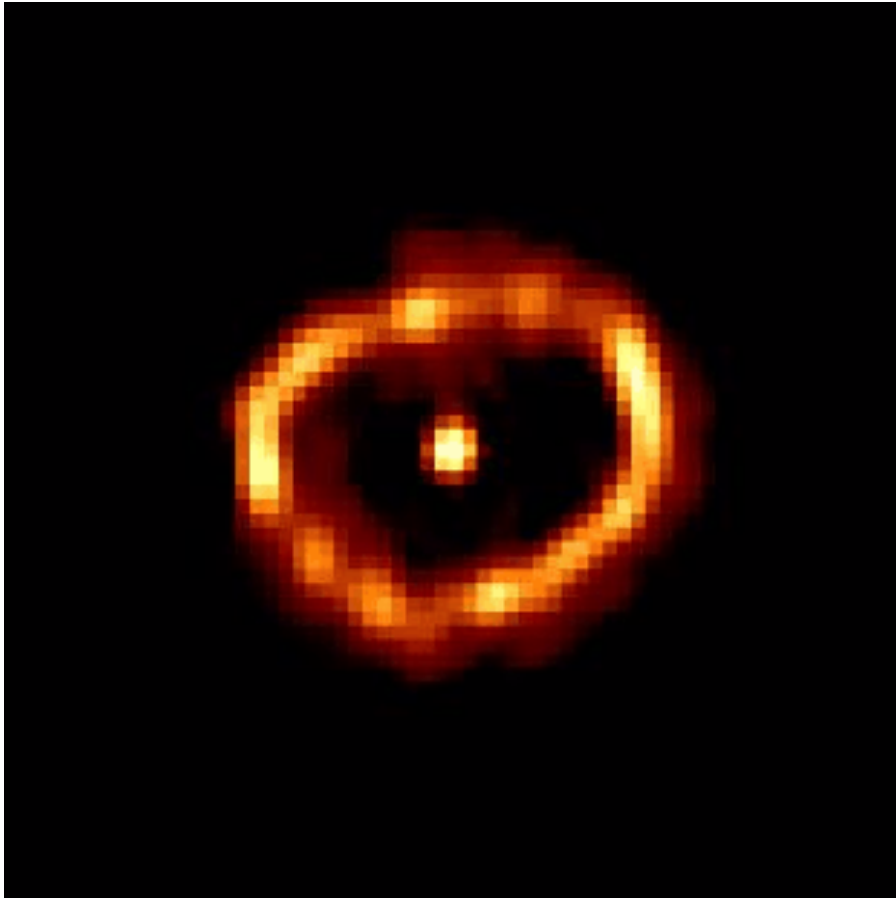
- Nova Persei became one of the brightest stars in the sky in 1901. Look there now and see the expanding shell from the explosion. The velocity of the material is  $\sim 2000 \text{ km s}^{-1}$

# Novae



- Nova Cyg (1992) illuminated a cloud of nearby Hydrogen gas.
- The expanding shell of the nova could be seen a few years later with HST.

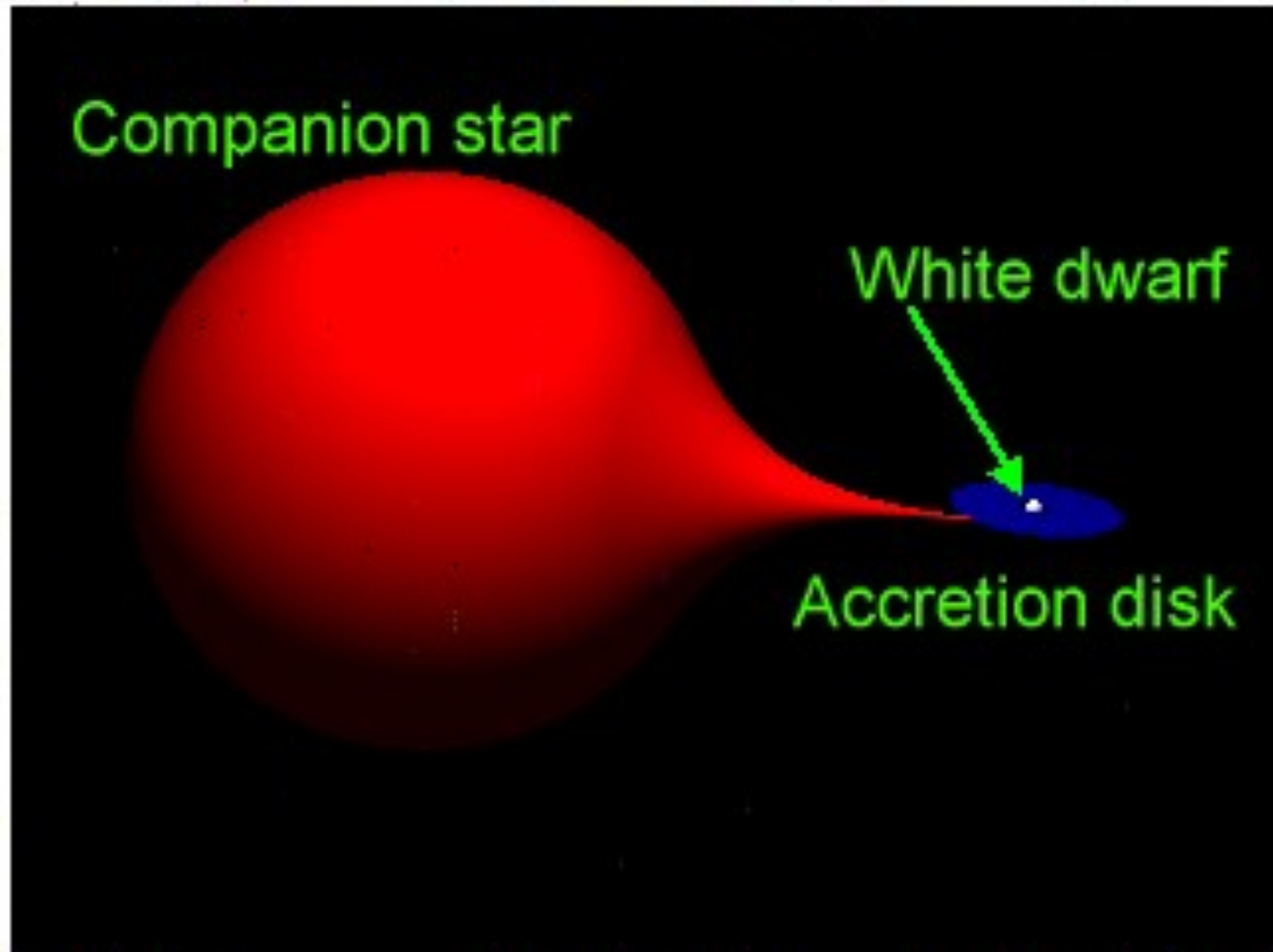
# Nova Cygni 1992



Visible magnitude at peak was 4.3. Photo at left is from HST in 1994. Discovered Feb. 19, 1992. Spectrum showed evidence for ejection of large amounts of neon, oxygen, and magnesium.

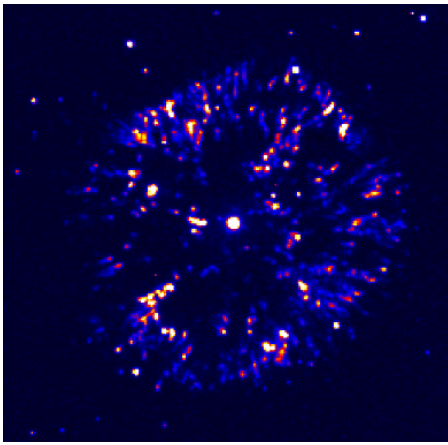
“Naked eye” novae occur roughly once per decade.

2.5 light days across  
ejected mass  $\sim 2 \times 10^{-4}$  solar masses

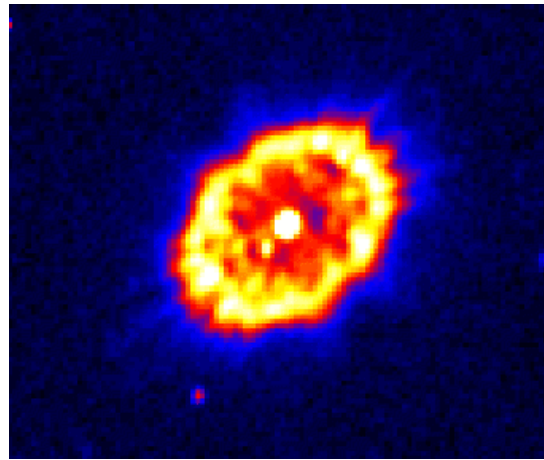


The companion star is typically a low mass (K or M) main sequence star. The orbital period is short  $< 1$  day.

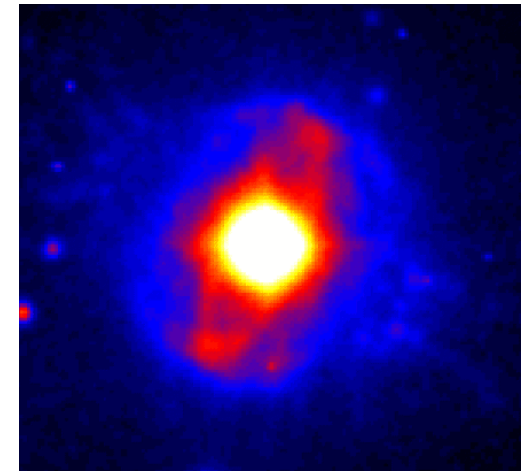
An earth mass or so is ejected at speeds of 100s to 1000s of  $\text{km s}^{-1}$ . Years later the ejected shells are still visible. The next page shows images from a ground-based optical survey between 1993 and 1995 at the William Hershel Telescope and the Anglo-Australian Telescope.



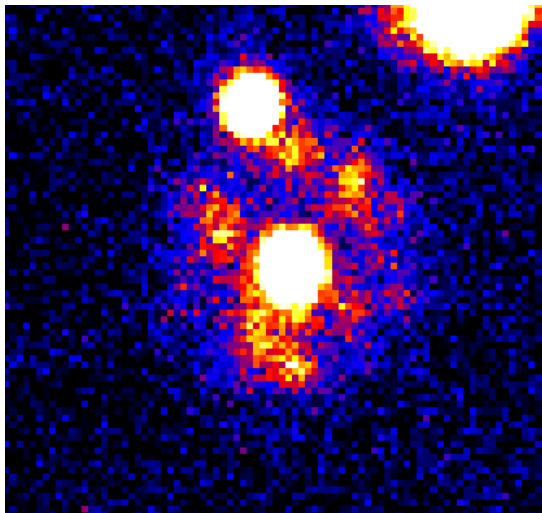
Nova Persei (1901)  
GK Per



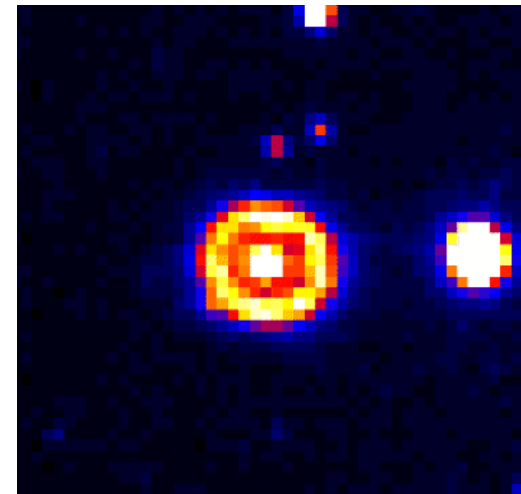
Nova Hercules (1934)  
DQ - Her



Nova Pictoris (1927)  
RR Pic



Nova Cygni (1975)  
V1500 Cygni



Nova Serpentis (1970)  
FH Ser



# MODEL FOR CLASSICAL NOVAE

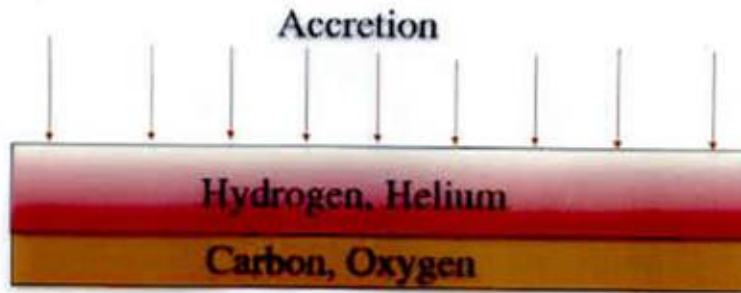
- A carbon-oxygen white dwarf accretes at a slow rate of about  $10^{-10}$  -  $10^{-8}$  solar masses per year from a binary companion. Hydrogen and helium accumulate on the surface (at higher accretion rates can get SN Ia).
- This material is initially too cool for nuclear reactions, but as accretion continues, it is compressed and heated. At about  $10^4$  g cm<sup>-3</sup>, hydrogen burning ignites (“hot” CNO cycle; temperature over 100 Million K)
- Initially the material is degenerate. Burning is also unstable because it happens in a thin shell on the WD surface. Hydrogen burns explosively. Not all of the hydrogen burns because the material is not very tightly bound to the white dwarf, but it all is ejected

Binding energy per gm for a  $1 M_{\odot}$  white dwarf

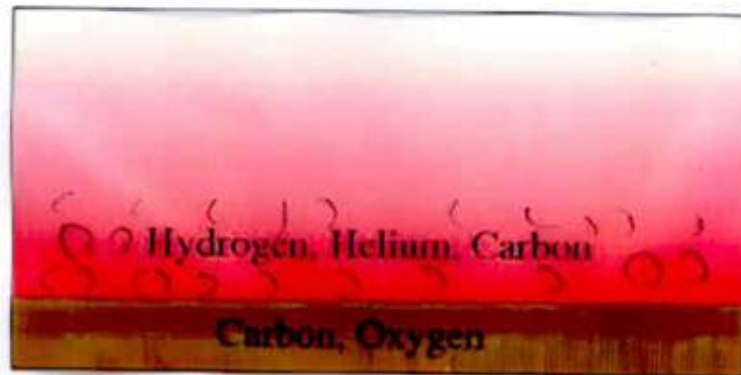
$$\frac{GM}{R} = \left( \frac{(6.67 \times 10^{-8})(2 \times 10^{33})}{5 \times 10^8} \right)$$
$$\approx 3 \times 10^{17} \text{ erg g}^{-1} \ll 6.8 \times 10^{18} \text{ erg g}^{-1} = q_H$$

- The hydrogen continues to burn for several months as the entire accreted layer is driven off the star in a powerful wind. None of the accreted material is left behind.
- Accretion then resumes and the cycle repeats

# Nova Model



## Explosion

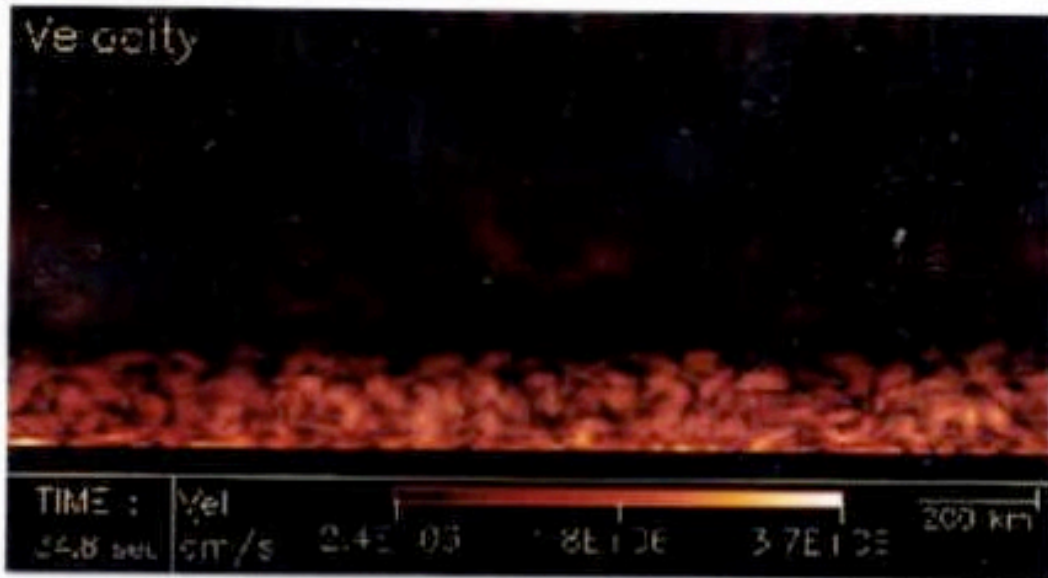


Typical peak hydrogen explosion temperatures are 200 million K at densities of  $10,000 \text{ g/cm}^3$

nb. Novae can *repeat!*

accrete  
explode  
accrete  
explode

·  
·  
·

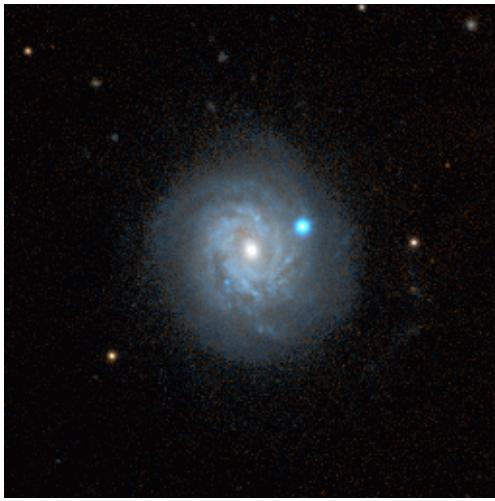


Kercek et al (1999)

About  
5000 trillion  
megatons/sec



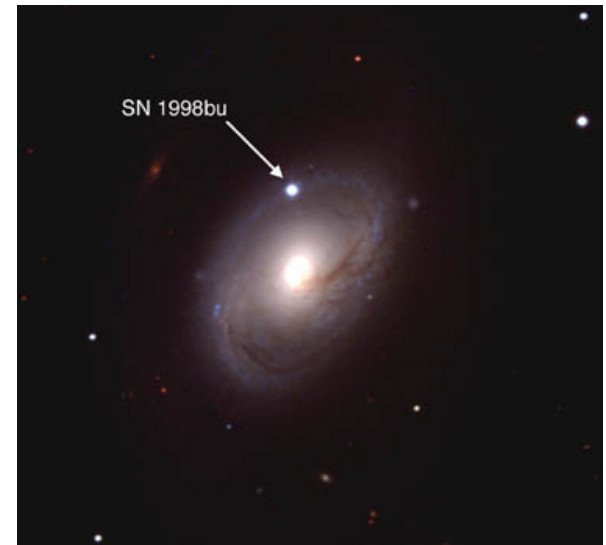
*Type Ia  
Supernovae*



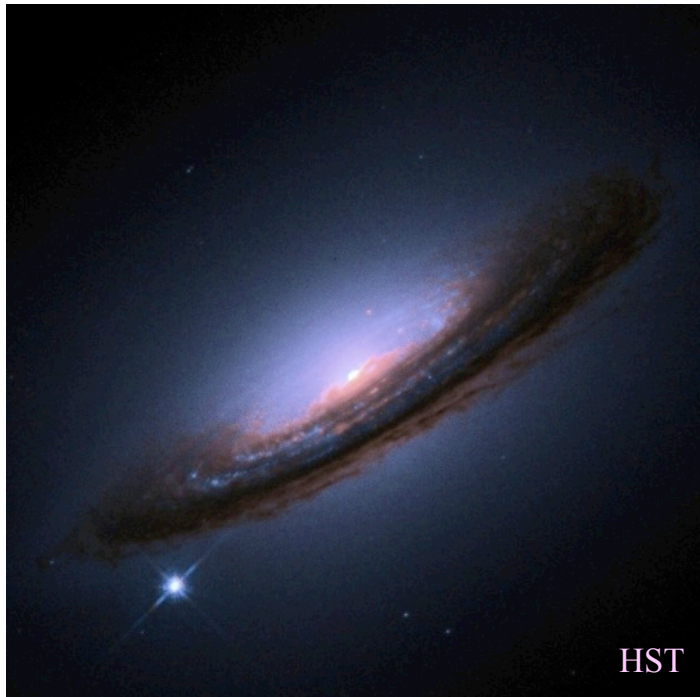
*SN 1998aq*



*SN 1998dh*



*SN 1998bu*



SN 1994D

Type Ia supernovae are some of the biggest thermonuclear explosions in the universe (only pair-instability SN are bigger).

Thirty billion, billion, billion megatons.

For several weeks their luminosity rivals that of a large galaxy.

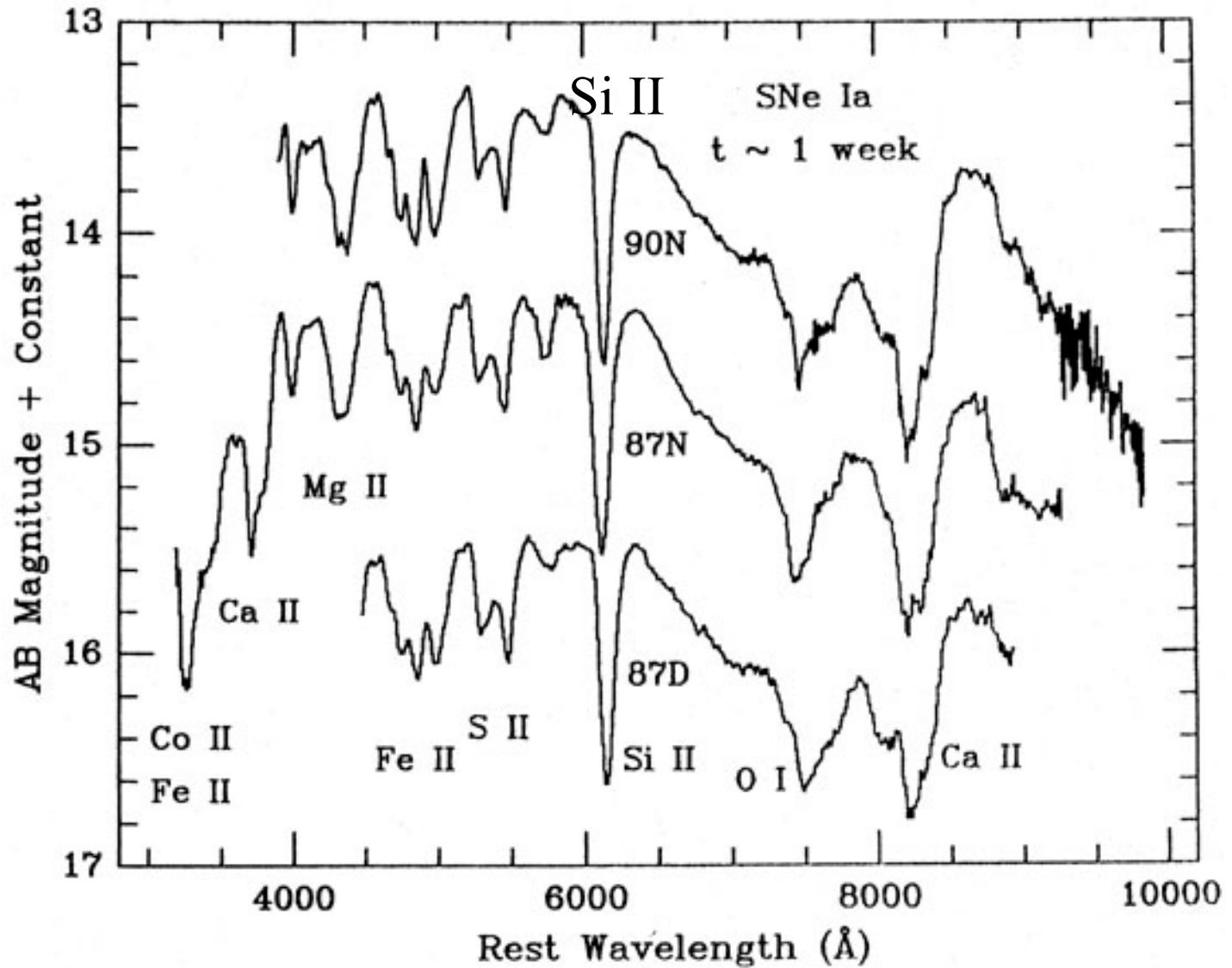
## Observational facts

- Very bright, regular events, peak  $L \sim 10^{43} \text{ erg s}^{-1}$
- Associated with an old stellar population (found in ellipticals, no clear association with spiral arms when in spiral galaxies)
- No hydrogen in spectra; strong lines of Si, Ca, Fe
- Total kinetic energy  $\sim 10^{51} \text{ erg}$  (nothing left behind)
- Higher speed, less frequent than Type II



SN 1994D

Spectra are similar from event to event



Spectra of three Type Ia supernovae near peak light – courtesy Alex Filippenko



---

---

## Possible Type Ia Supernovae in Our Galaxy

---

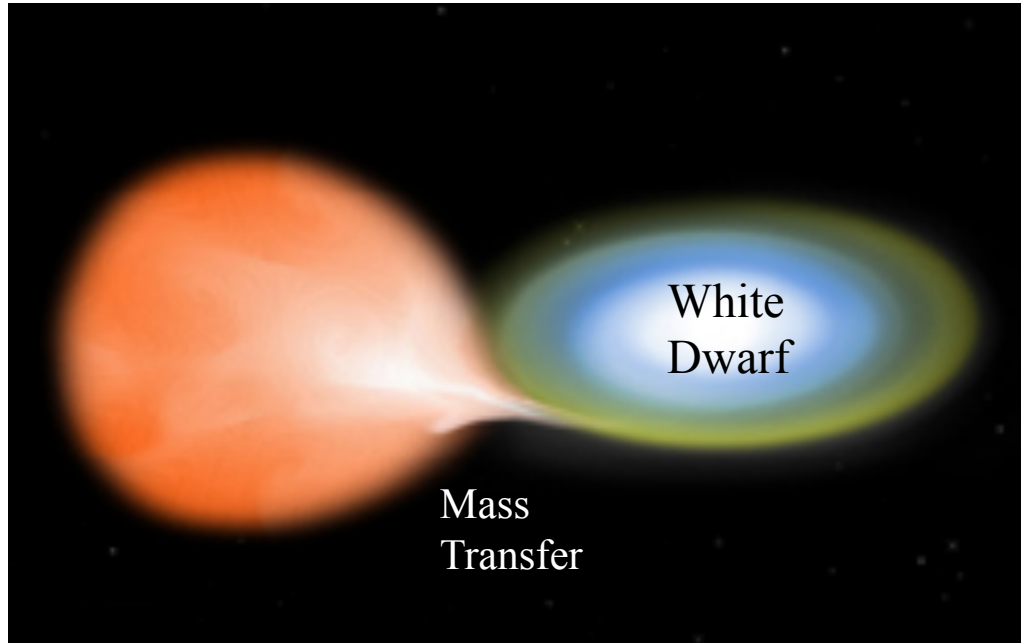
SN	D(kpc)	$m_V$
185	1.2 $\pm$ 0.2	-8 $\pm$ 2
1006	1.4 $\pm$ 0.3	-9 $\pm$ 1
1572	2.5 $\pm$ 0.5	-4.0 $\pm$ 0.3
1604	4.2 $\pm$ 0.8	-4.3 $\pm$ 0.3

---

Expected rate in the Milky Way Galaxy about 1 every 200 years, but dozens are found in other galaxies every year. About one SN Ia occurs per decade closer than 5 Mpc. SN 2014J was at 3.5 Mpc and is being extensively studied.

## (A) A Leading Model\*

Accretion and growth to the Chandrasekhar Mass (1.38 solar masses)  
*Degenerate thermonuclear explosion.* (Hoyle and Fowler, 1960).



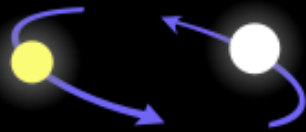
### Explains:

- Lack of H in spectrum
- Association with old population
- Regularity
- Large production of  $^{56}\text{Ni}$  and a light curve dominated by radioactivity.

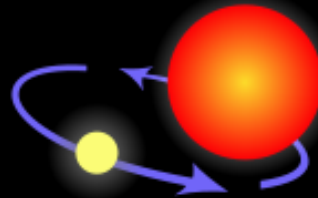
\* there are 2 others a) merging white dwarfs and b) explosion well before the Chandrasekhar mass is reached.

# Evolutionary scenario

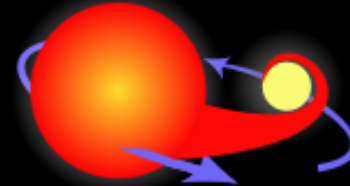
## The progenitor of a Type Ia supernova



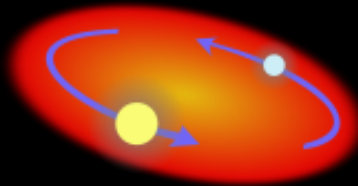
Two normal stars are in a binary pair.



The more massive star becomes a giant...



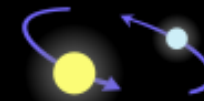
...which spills gas onto the secondary star, causing it to expand and become engulfed.



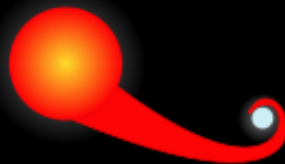
The secondary, lighter star and the core of the giant spiral toward within a common envelope.



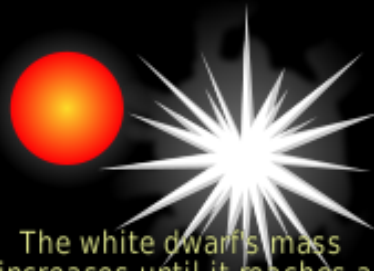
The common envelope is ejected, while the separation between the core and the secondary star decreases.



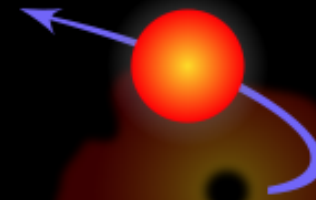
The remaining core of the giant collapses and becomes a white dwarf.



The aging companion star starts swelling, spilling gas onto the white dwarf.



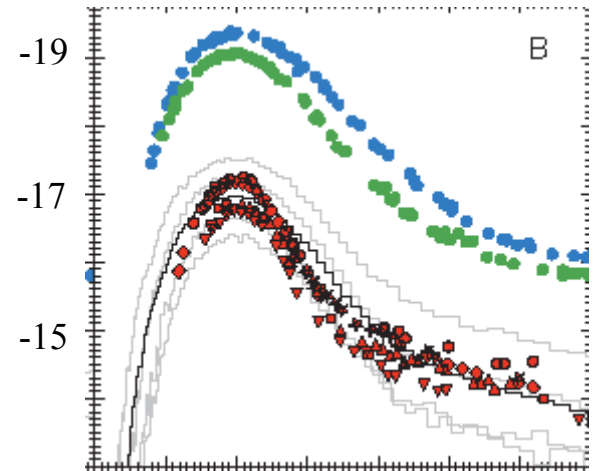
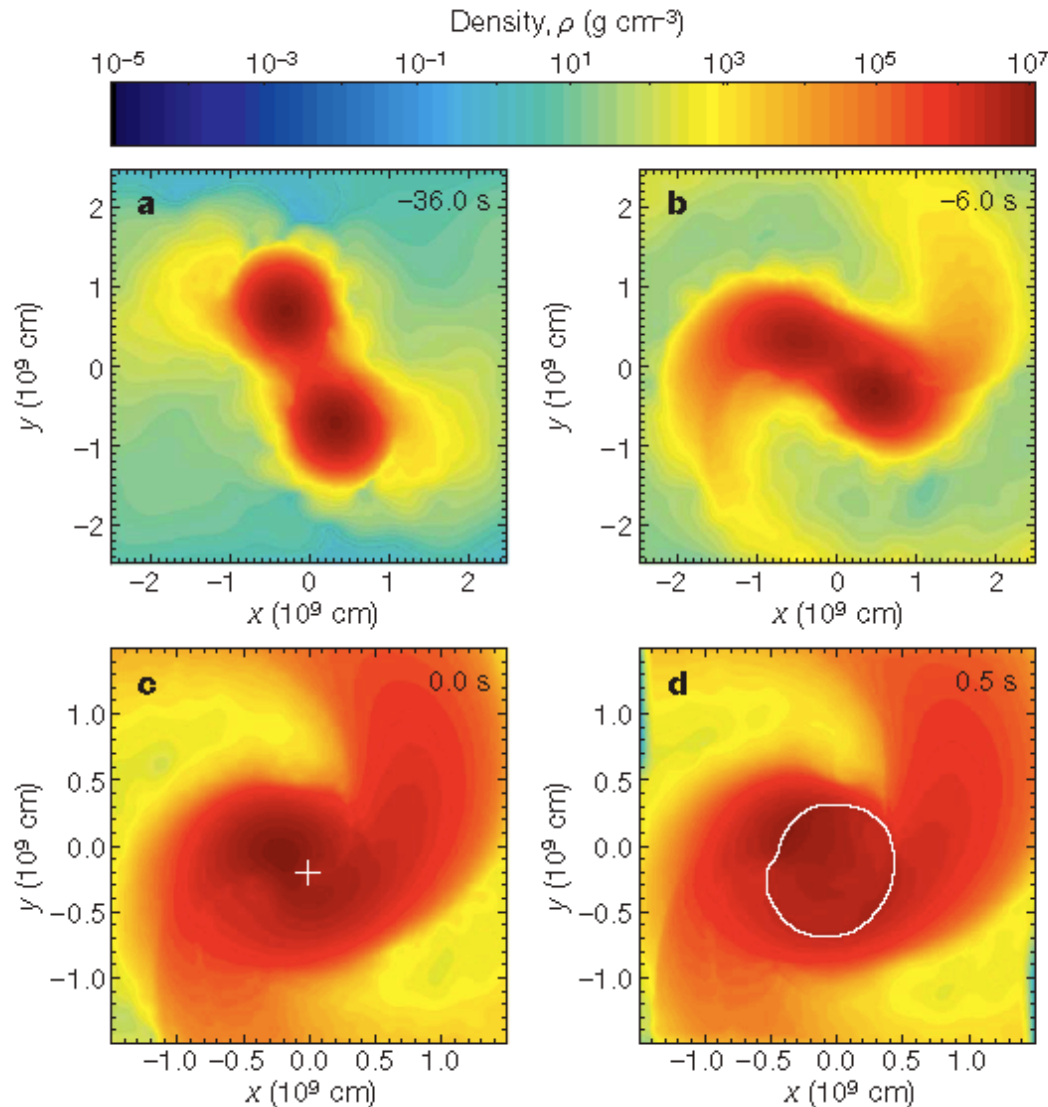
The white dwarf's mass increases until it reaches a critical mass and explodes...



...causing the companion star to be ejected away.

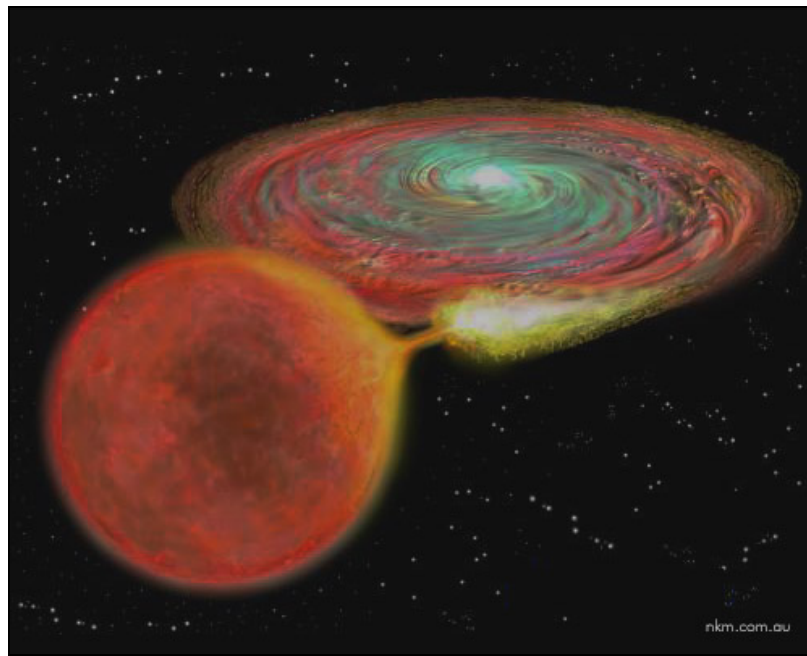
# Another Possibility

## Merging White Dwarfs



0.9 + 0.9 solar mass WD  
still make subluminal event

1.1 + 0.9 can make a more  
typical SN Ia like 2011fe  
(Roepke et al 2012, ApJL,  
750, L19)



In order for the white dwarf to grow and reach the Chandrasekhar Mass the accretion rate must be relatively high (to avoid the nova instability). In the case of the “single degenerate model” this must be maintained for millions of years.

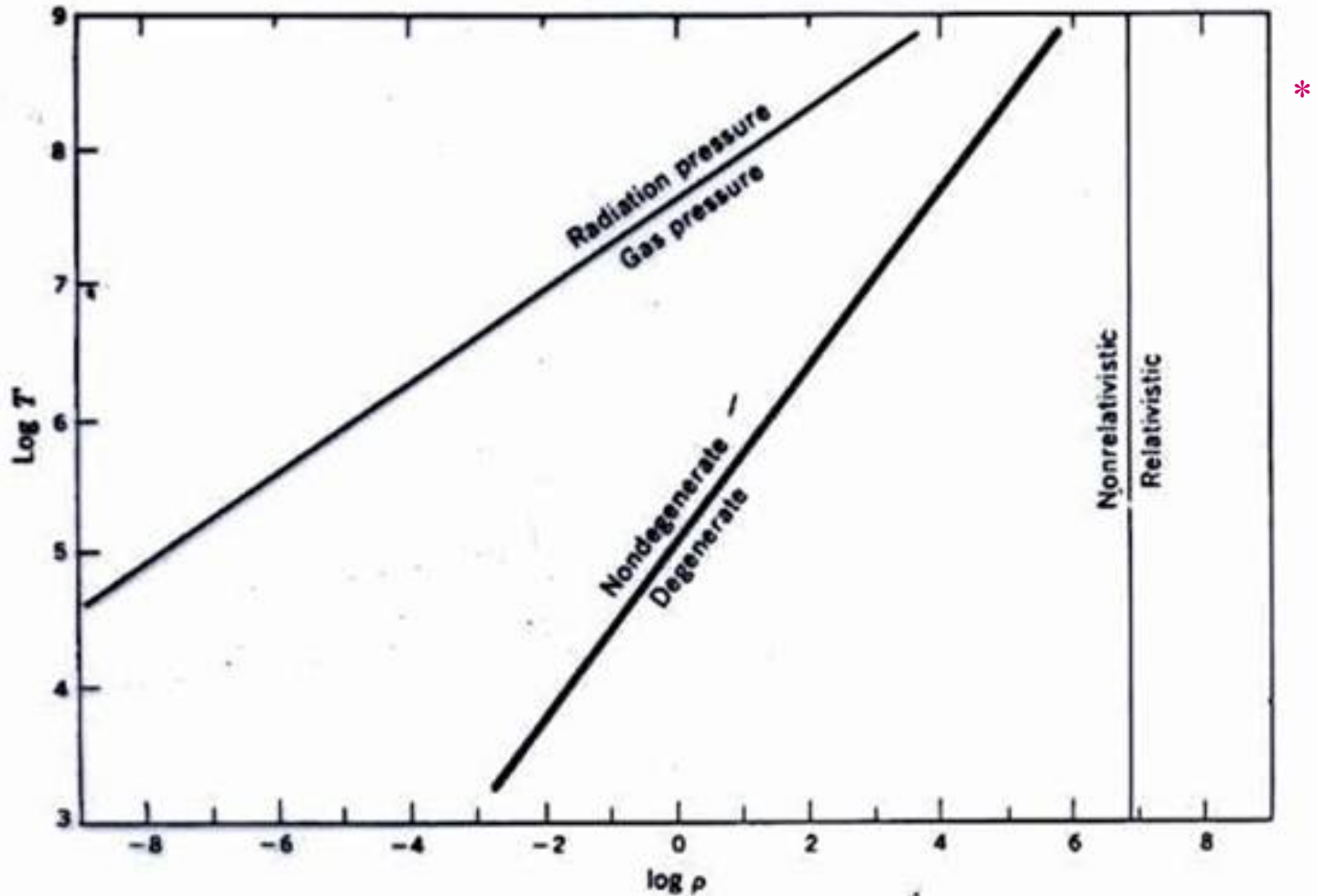
$$\dot{M} \sim 10^{-7} M_{sun} / yr$$

## Progenitor

Ignition occurs carbon fusion in the center of the white dwarf begin to generate energy faster than convection and neutrino losses can carry it away.

$$\text{As } \rho \rightarrow 2 \times 10^9 \text{ gm cm}^{-3}; T \approx 3 \times 10^8 \text{ K}$$

$$M \approx 1.38 M_{\odot}$$



$P$  is independent of  $T$ , but  
 $\epsilon_{nuc} \propto T^{26}$  for carbon burning

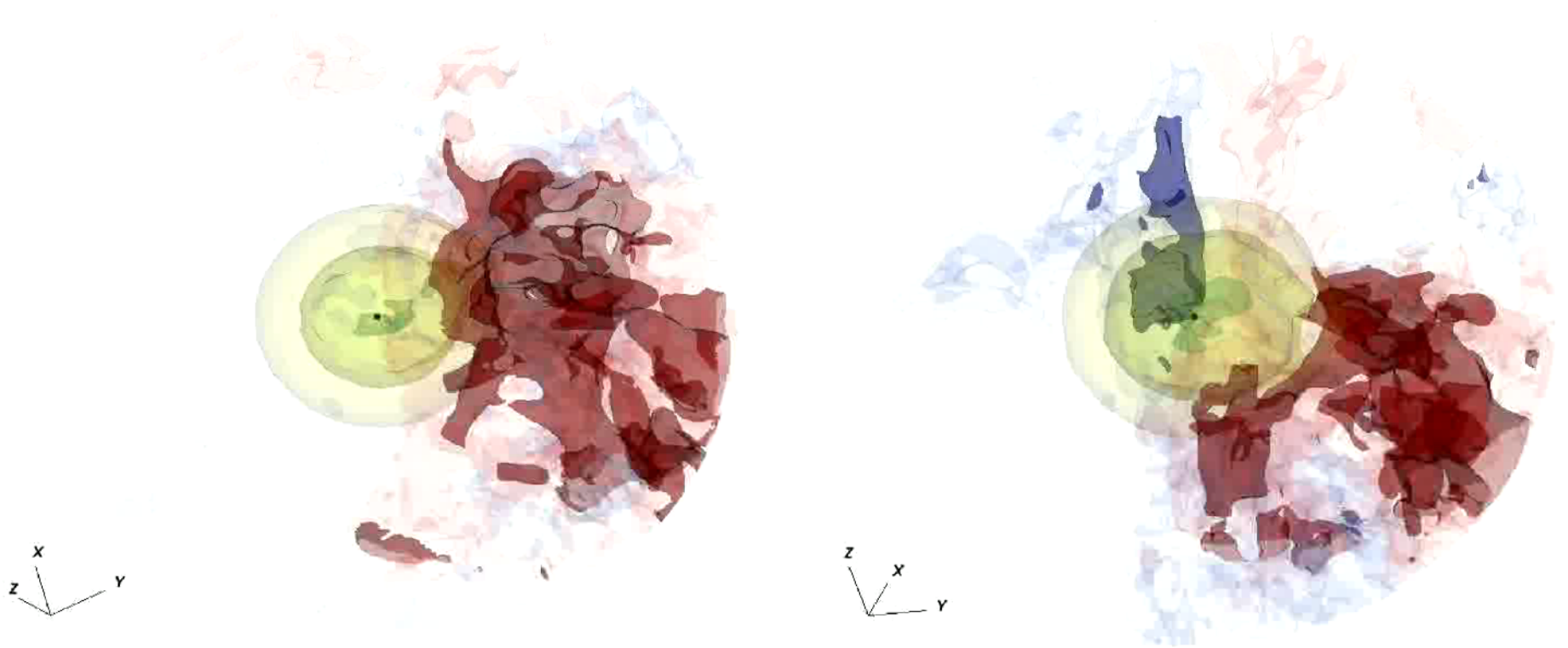
$\left. \begin{array}{l} P \text{ is independent of } T, \text{ but} \\ \epsilon_{nuc} \propto T^{26} \text{ for carbon burning} \end{array} \right\} \Rightarrow \text{BANG}$

Ignition at  $\rho_c \sim 3 \times 10^9$  because:

- 1) Neutrino loss rates decline at very high density
- 2) Carbon fusion reaction enhanced at high density by “electron screening”
- 3) Central regions compressed and heated by accretion of matter on surface.

Once carbon ignites, the core begins to convect. Energy is generated too fast for conduction or diffusion to get it to the surface fast enough.

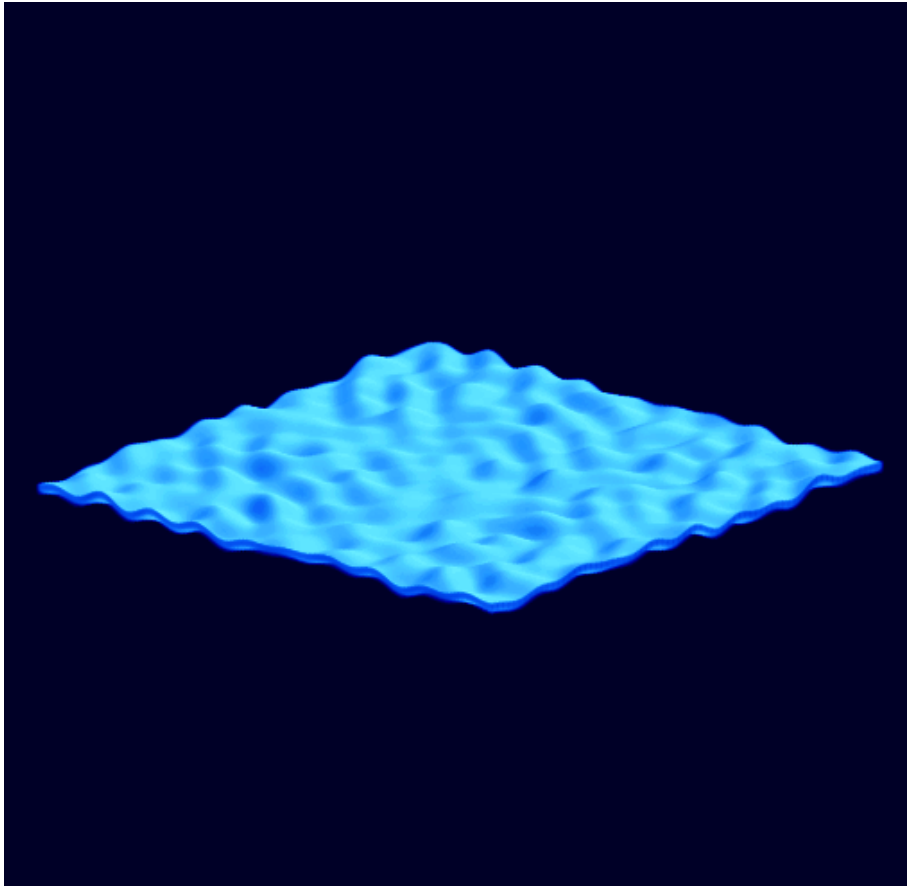




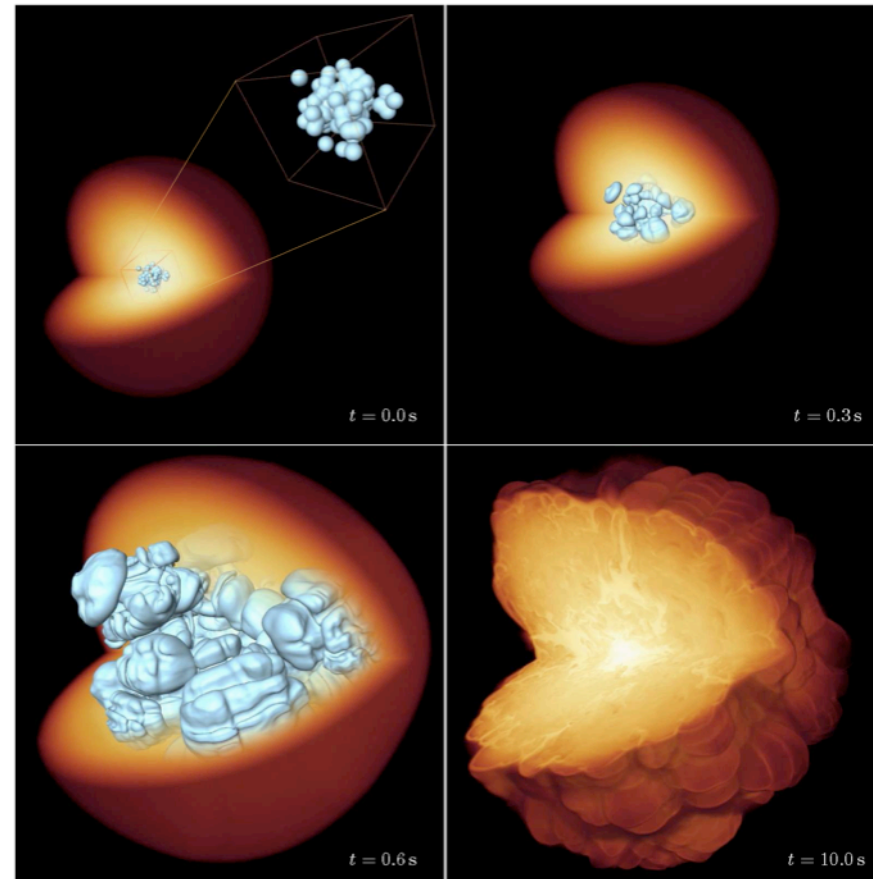
MAESTRO simulations of convection in a non-rotating white dwarf (left) and a 1.5% Keplerian rotating white dwarf (right) preceding a Type Ia supernova. Each simulation uses adaptive mesh refinement with an effective  $768^3$  zones (6.5 km spatial resolution)

Explosion preceded by about a century of convection. The convection is asymmetric

# The Explosion - Burning and Propagation



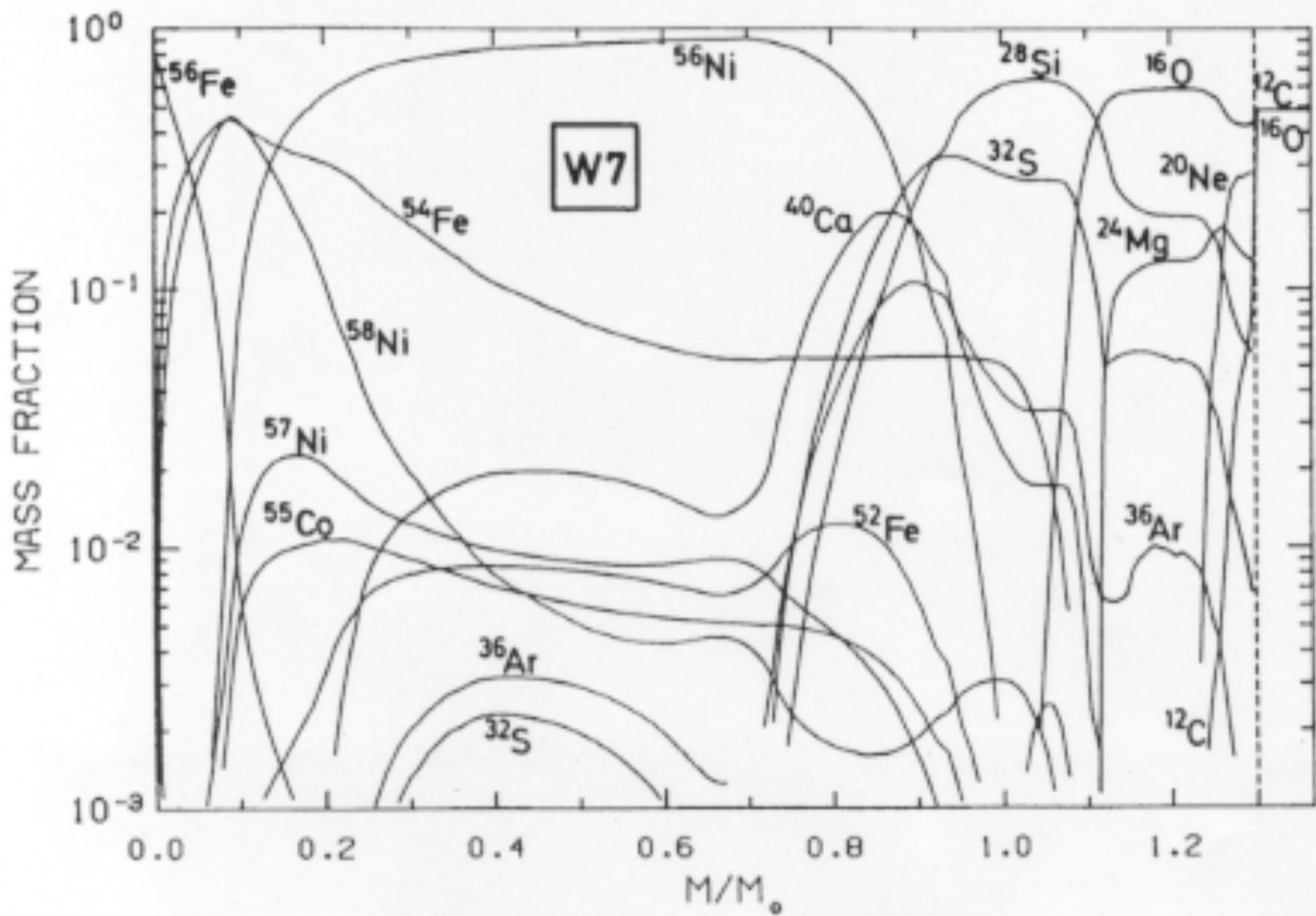
Zingale et al. (2005)

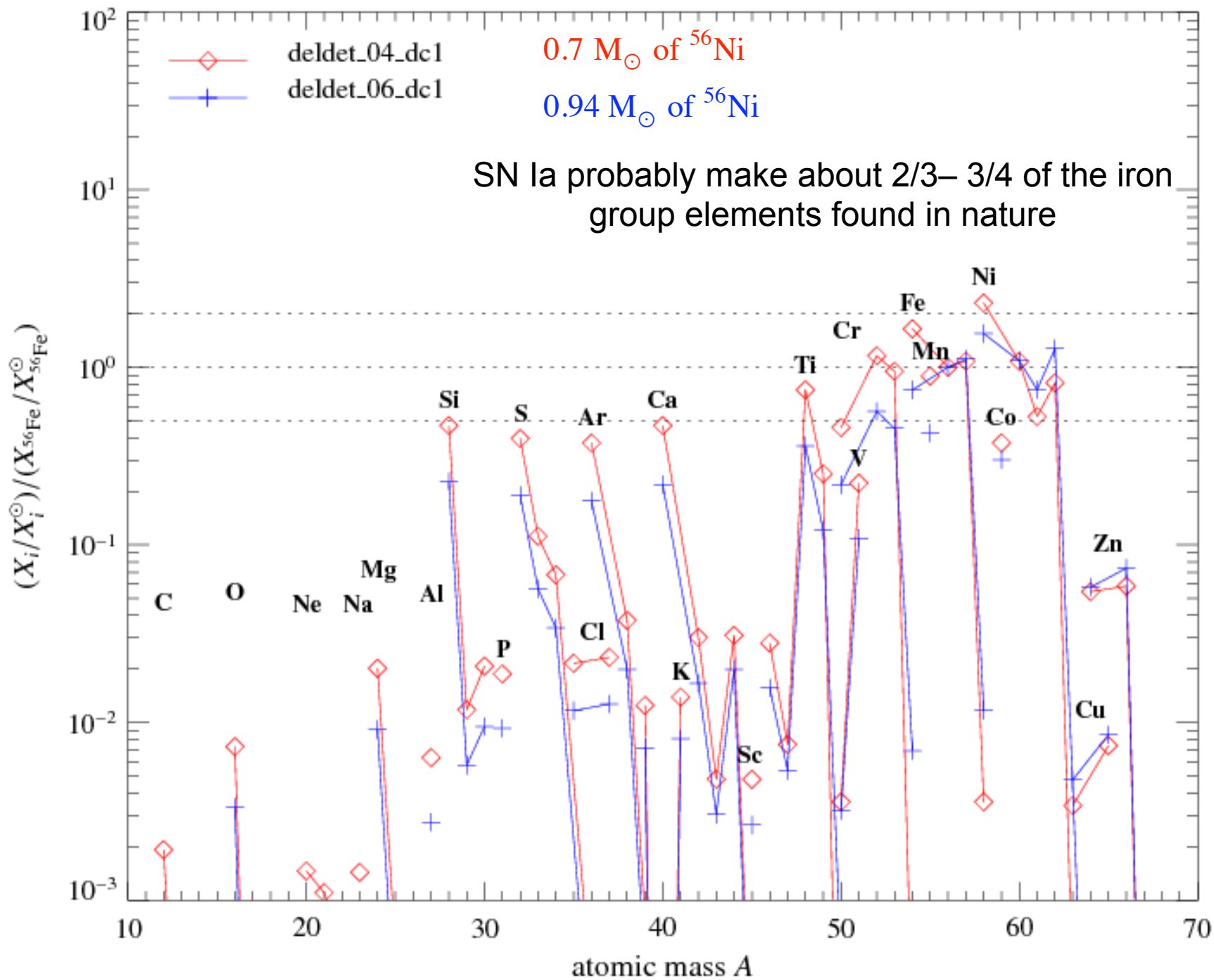


Roepke and Hillebrandt (2007)

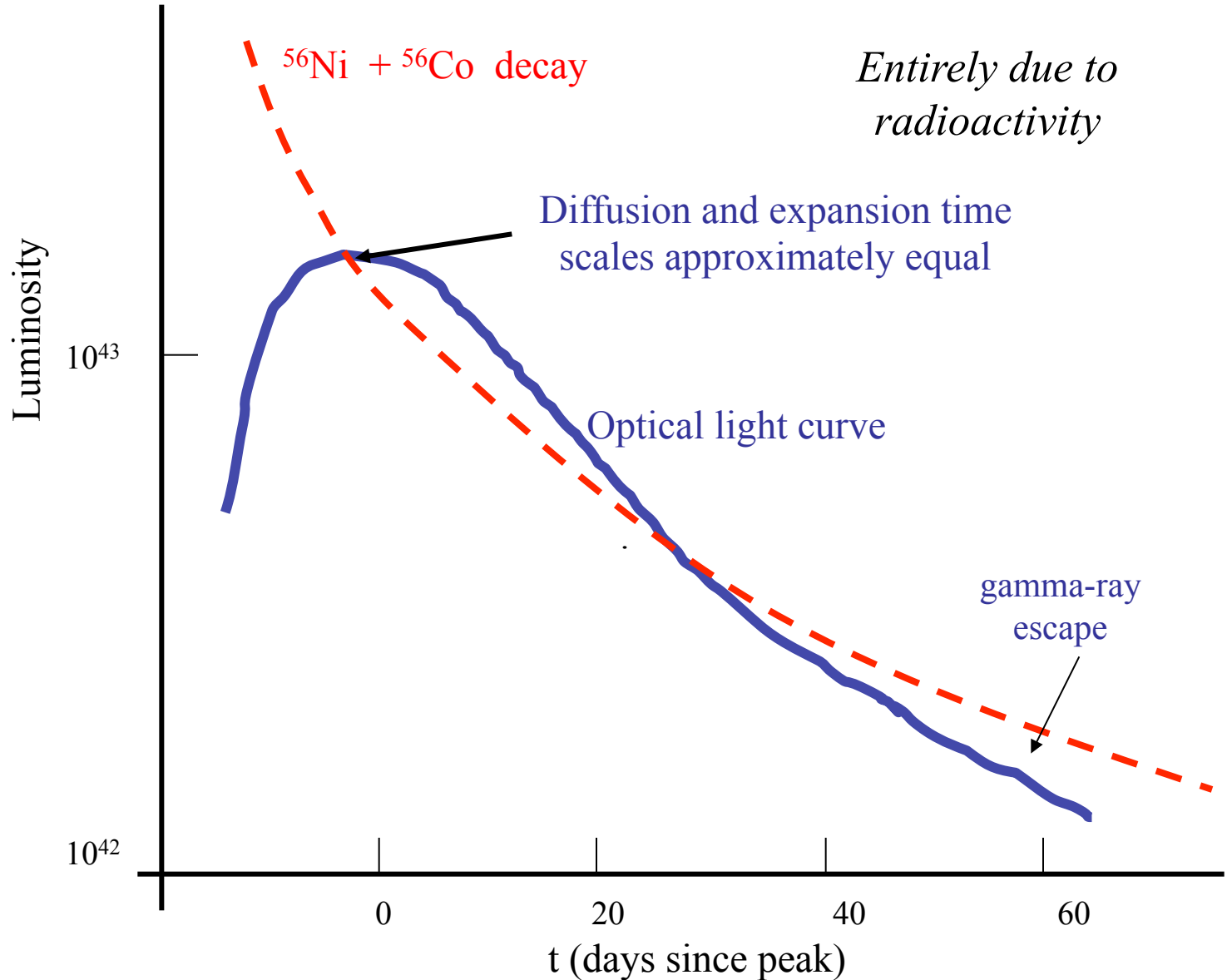




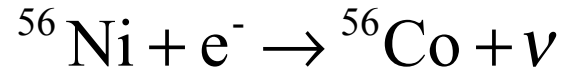




# Qualitative Type Ia Supernova Light Curve

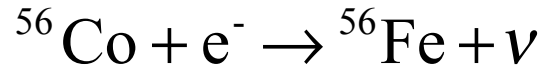


## Radioactivity



$$\tau_{1/2} = 6.1 \text{ days}$$

$$q = 3.0 \times 10^{16} \text{ erg/gm}$$



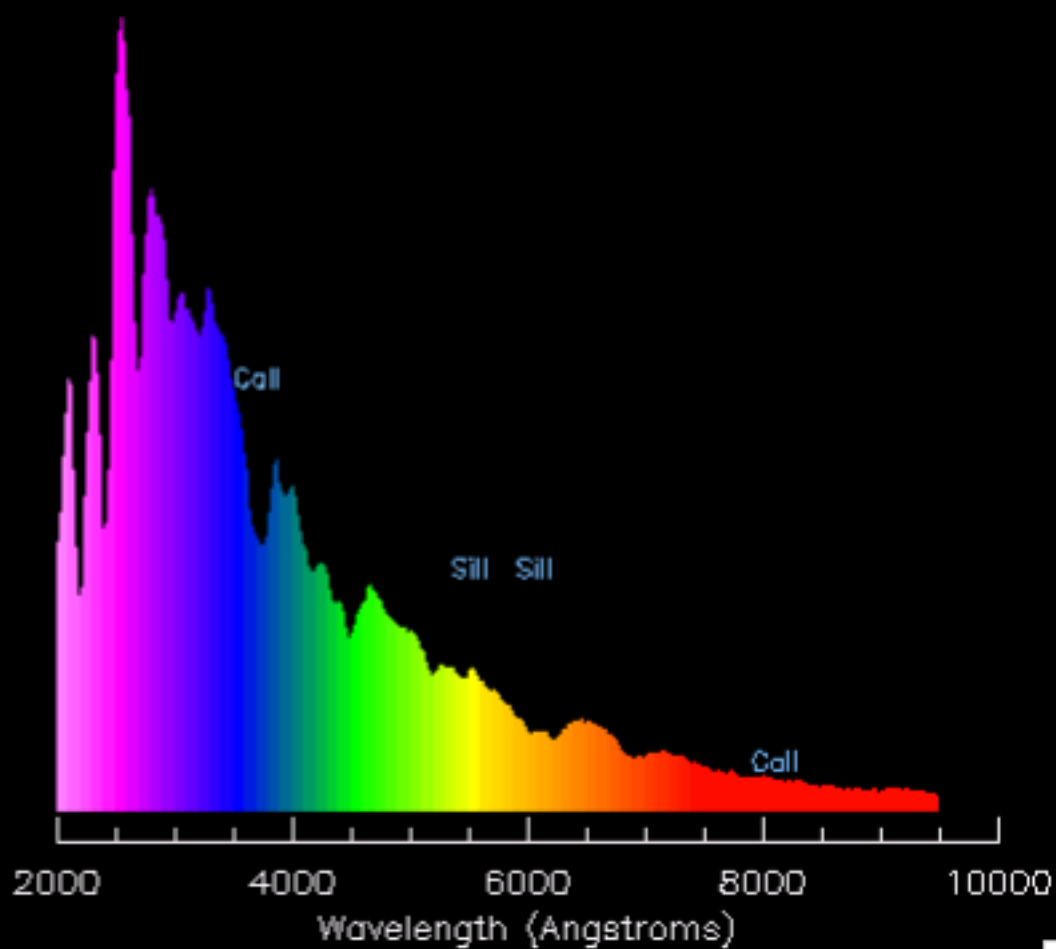
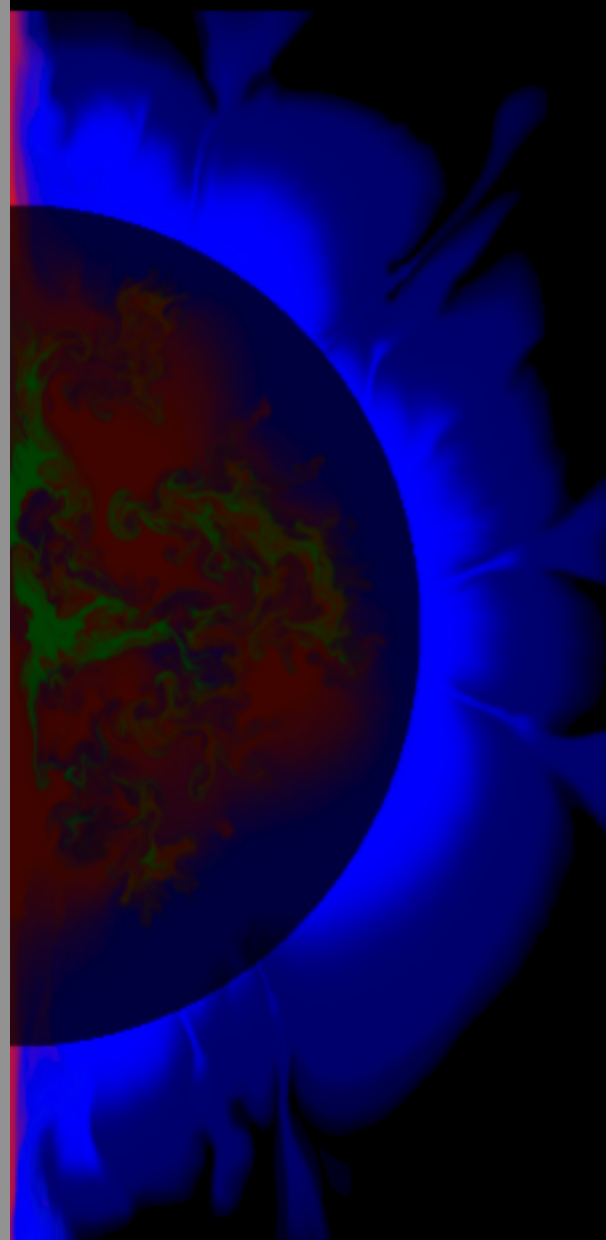
$$\tau_{1/2} = 77.1 \text{ days}$$

$$q = 6.4 \times 10^{16} \text{ erg/gm}$$

0.6 solar masses of radioactive Ni and Co can thus provide  $1.1 \times 10^{50}$  erg at late times after adiabatic expansion is essentially over.



$t = 6.0$  days



# Supernova

(Death of a star)

## Type Ia

- No hydrogen
- Thermonuclear explosion of a white dwarf star
- No bound remnant
- $\sim 10^{51}$  erg kinetic energy
- $v \sim 5,000 - 30,000 \text{ km s}^{-1}$
- No neutrino burst
- $E_{\text{optical}} \sim 10^{49}$  erg
- $L_{\text{peak}} \sim 10^{43} \text{ erg s}^{-1}$  for 2 weeks
- Radioactive peak and tail ( $^{56}\text{Ni}$ ,  $^{56}\text{Co}$ )
- 1/200 yr in our Galaxy
- Makes about 2/3 of the iron in the Galaxy

## Type II

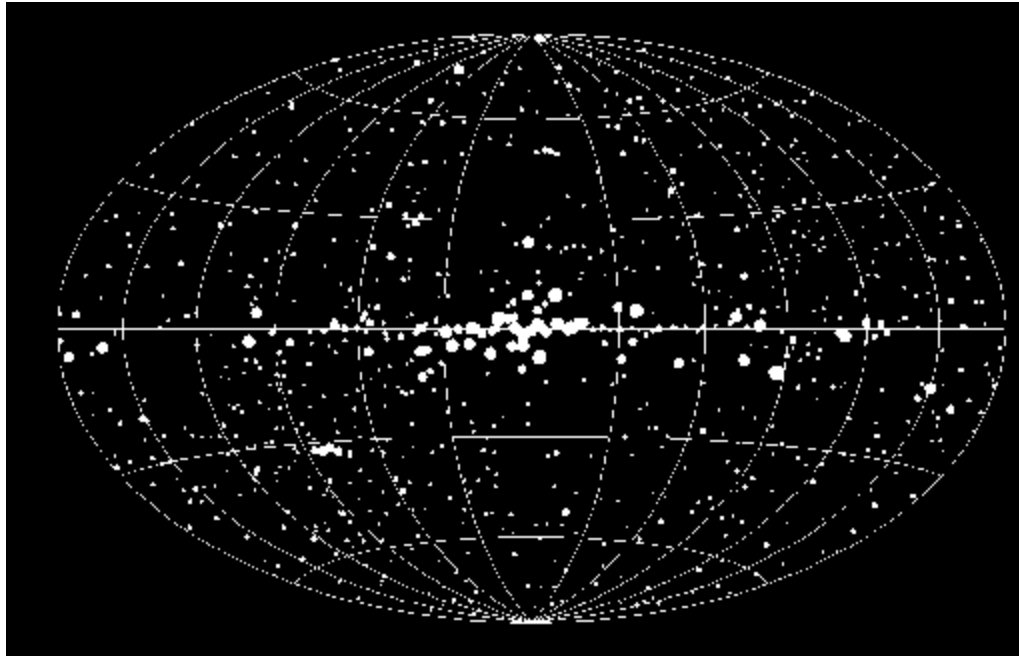
- Hydrogen in spectrum
- $M > 8$  solar masses
- Iron core collapses to a neutron star or black hole
- $\sim 10^{51}$  erg kinetic energy
- $v \sim 2,000 - 30,000 \text{ km s}^{-1}$
- Neutrino burst  $\sim 3 \times 10^{53}$  erg
- $E_{\text{optical}} \sim 10^{49}$  erg
- $L_{\text{peak}} \sim 3 \times 10^{42} \text{ erg s}^{-1}$  for about 3 months (varies from event to event)
- Radioactive tail ( $^{56}\text{Co}$ )
- 2/100 yr in our Galaxy
- Makes about 1/3 iron and all the oxygen plus many other elements

*There are also Type Ib and Ic supernovae that share many of the properties of Type II but have no hydrogen in their spectra*

## *Binary X-Ray Sources*

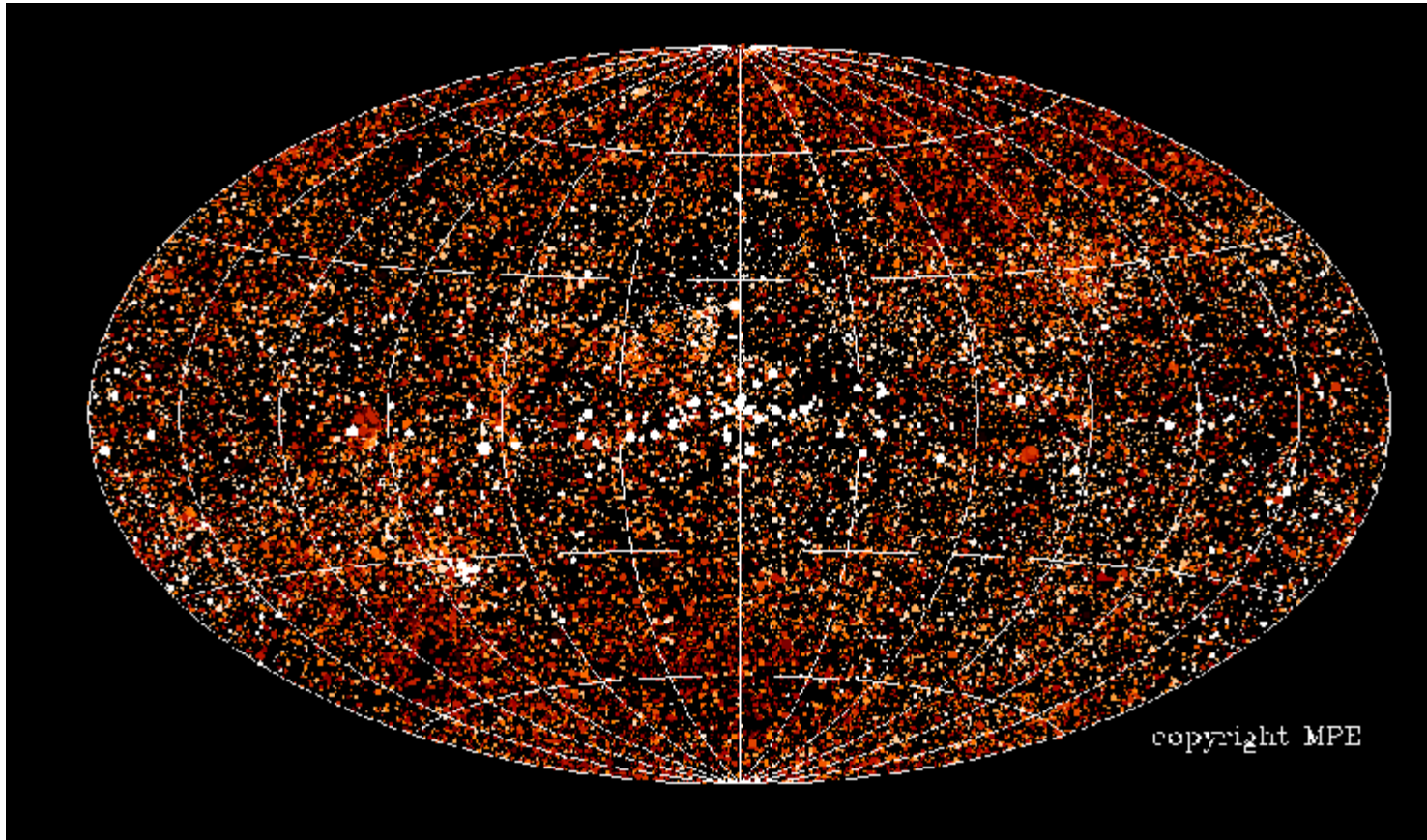
A neutron star or black hole receiving  
mass from a companion star

# The bright x-ray sky – mostly point sources (AGN, SNR, black holes and neutron stars)



HEAO survey completed 1978  
841 sources mostly binary systems  
containing a neutron star or a black hole.

Also Giacconi - rockets in 60' s  
UHURU = SAS 1 1970 - 1973



ROSAT – first pass in 1990 – 1991  
50,000 sources. By 1999  
over 150,000 sources had  
been catalogued. Many are  
“normal stars”.

red  $> 100,000$  K  
white  $\sim 20$  million K

luminosities  $\sim 10^{36} - 10^{38}$   
erg  $s^{-1}$

## X Ray Binaries

- Two classes based upon mass of companion star that is feeding the x-ray emitting compact object
- High mass donors (over about 5 solar masses) are found in the disk of the galaxy and are Population I. The donor star is typically a B-type main sequence star or a blue supergiant. Roughly 300 are estimated to exist in our galaxy. Lifetime  $< 10^8$  years. Long period. High accretion rate. Visible far away. Dust extinction not a problem.
- Low mass x-ray binaries contain a donor star of  $<$  about 1 solar mass which may be a main sequence star. Population II. Found in Galactic center, globular clusters, in and above disk. Roughly 300 estimated to exist.
- Luminosities in X-rays for both are  $\sim 10^{36} - 10^{38}$  erg s<sup>-1</sup>. Spectra are approximately black bodies – but x-rays means they are very hot  $\sim 10^7$  K

## MODELS

- The persistent emission of all x-ray binaries is due to the gravitational energy released by the accreted matter as it impacts the surface of the neutron star (black holes are a special case of this where the energy is released in a disk outside the event horizon).
- Typical accretion rates are  $10^{-8} M_{\odot} \text{ y}^{-1}$  (or  $6 \times 10^{17} \text{ g s}^{-1}$ )

$$\begin{aligned} L &= \frac{GM\dot{M}}{R} & \dot{M} &= \frac{dM}{dt} \\ &= \frac{(6.67 \times 10^{-8})(1.4)(2 \times 10^{33})(6 \times 10^{17})}{1.0 \times 10^6} \\ &= 1 \times 10^{38} \text{ erg s}^{-1} \end{aligned}$$

- This is still approximately blackbody radiation, so

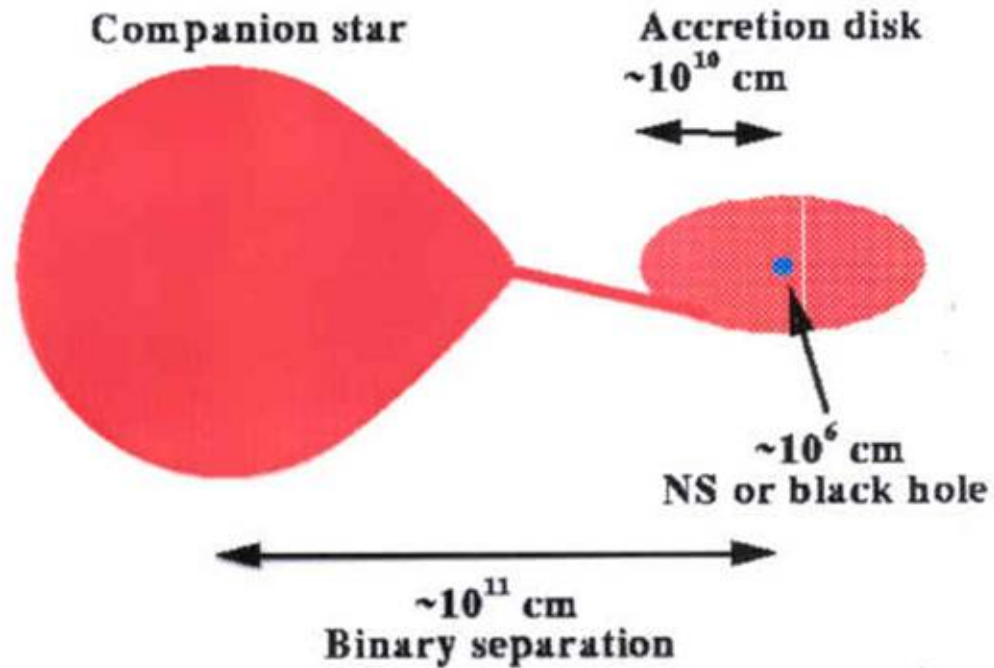
$$T_{eff} \approx \left( \frac{L}{4\pi R^2 \sigma} \right)^{1/4} \quad R \approx 10 \text{ km}$$
$$= 2 \times 10^7 \text{ K}$$

which corresponds to x-rays

$$\lambda_{\max} = \frac{0.289 \text{ cm}}{T_{eff}} = \frac{2.89 \times 10^7 \text{ Angstroms}}{T_{eff}}$$
$$\approx 3 \text{ Angstroms (X-rays)}$$



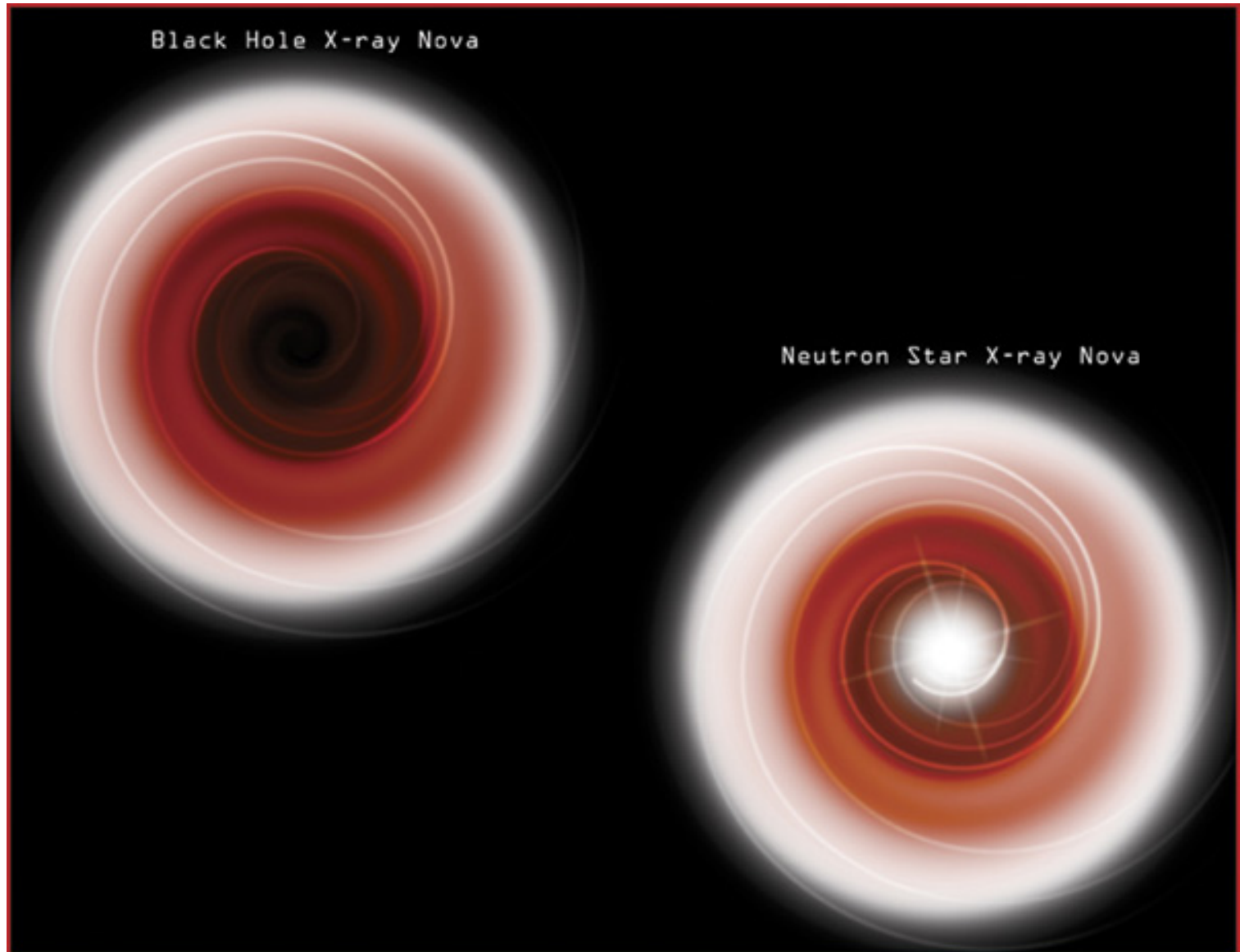
## Accreting neutron star or black hole



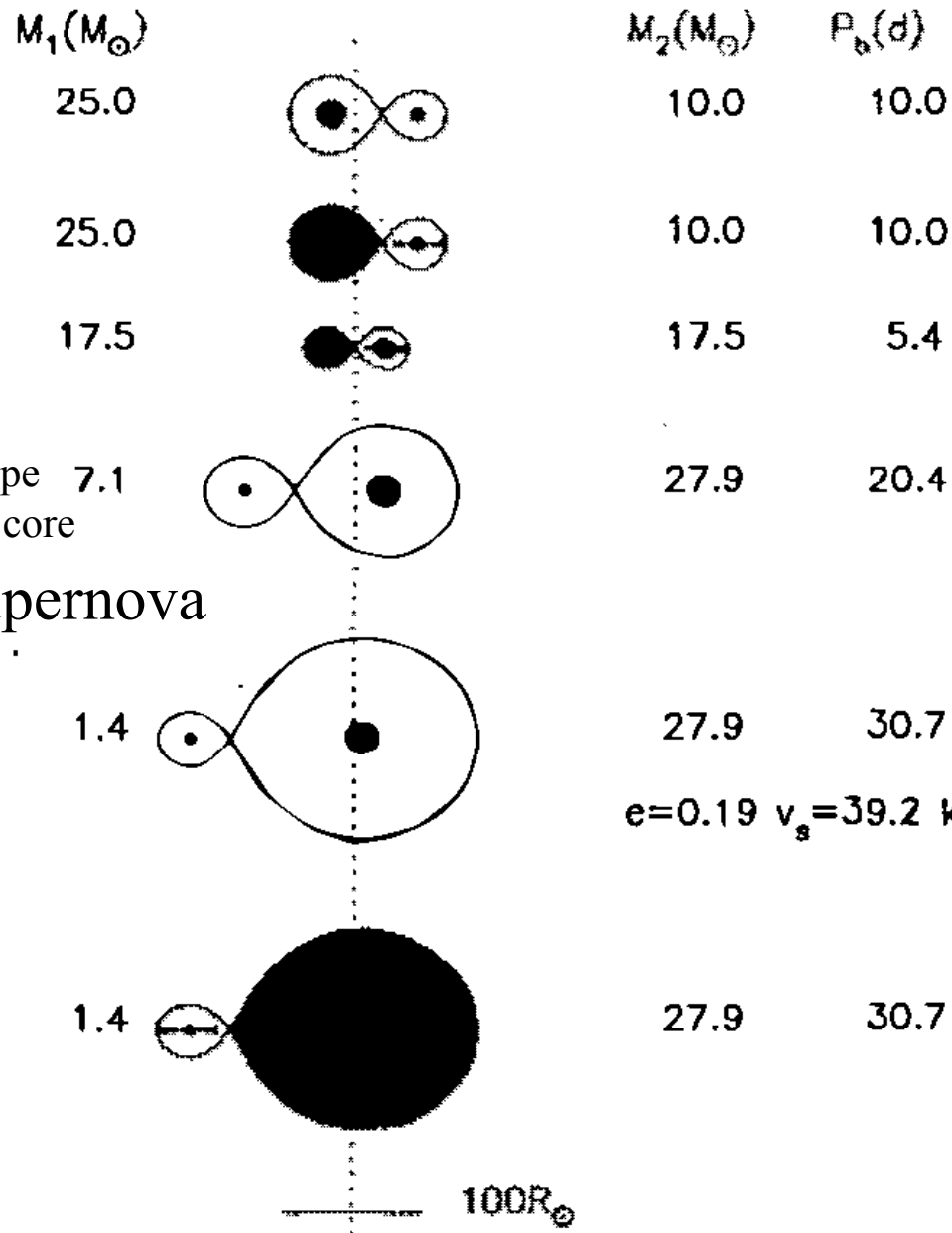
Luminosity  $\sim 10^{36} - 10^{38}$  erg  $s^{-1} = 200 - 50,000 L_{\text{sun}}$

Temperature of disk  $\sim 10^7$  K  $\Rightarrow$  primarily X-rays

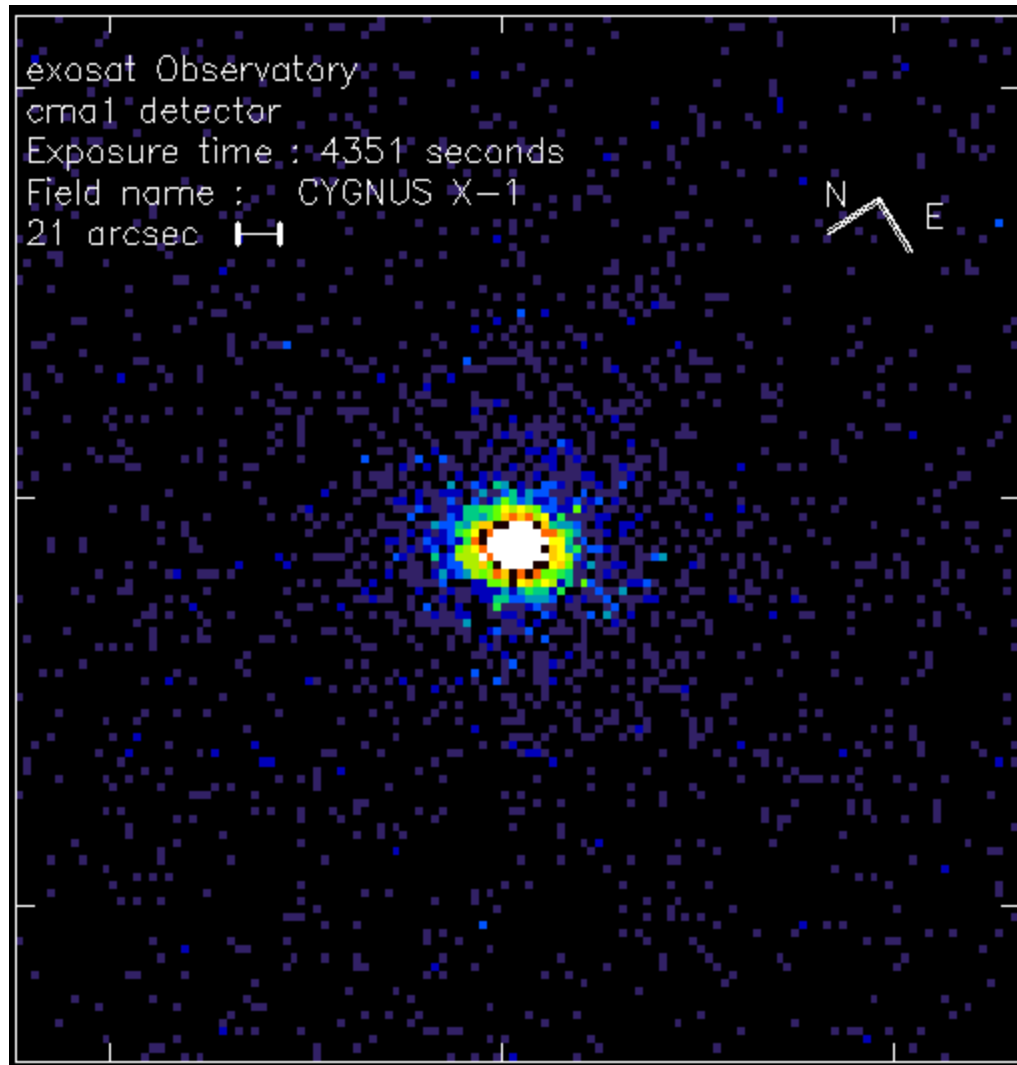
# Black Hole Illustration



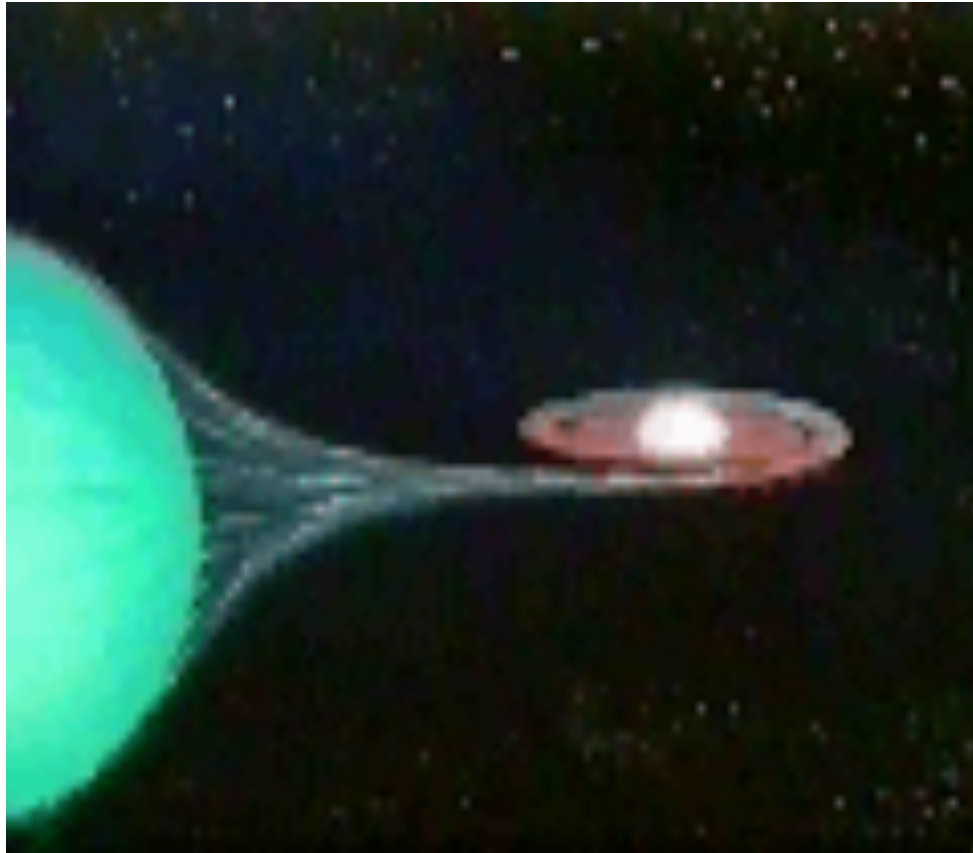
# High Mass X-Ray Binary Formation



# Cyg X-1 in X-Rays



## Artist's Rendition of Cyg X-1



Discovered in early 1970's

Companion is a blue supergiant HDE226868

Period 5.6 days

## Black hole candidates

<u>Source</u>	<u>Companion</u>	<u>P (days)</u>	<u>Mass</u>
Cygnus X-1	B supergiant	5.6	15
LMC X-3	main sequence	1.7	4-11
A0620-00 (V616 Mon)	K main sequence	7.8	4-9
GS2023+338 (V404 Cyg)	K main sequence	6.5	> 6
GS2000+25 (QZ Vul)	K main sequence	0.35	5-14
GS1124-683 (Nova Mus 1991)	K main sequence	0.43	4-6
GRO J1655-40 (Nova Sco 1994)	F main sequence	2.4	4-5
H1705-250 (Nova Oph 1977)	K main sequence	0.52	> 4
LMC X-1	post-main seq (32 $M_{\odot}$ )	3.9	10.9

# In the Milky Way....

Name	BHC Mass (solar masses)	Companion Mass (solar masses)	Orbital period (days)	Distance from Earth (light years)
A0620-00/V616 Mon	11 ± 2	2.6–2.8	0.33	about 3500
GRO J1655-40/V1033 Sco	6.3 ± 0.3	2.6–2.8	2.8	5000–11000
XTE J1118+480/KV UMa	6.8 ± 0.4	6–6.5	0.17	6200
Cyg X-1	11 ± 2	≥18	5.6	6000–8000
GRO J0422+32/V518 Per	4 ± 1	1.1	0.21	about 8500
GRO J1719-24	≥4.9	~1.6	possibly 0.6 <sup>[15]</sup>	about 8500
GS 2000+25/QZ Vul	7.5 ± 0.3	4.9–5.1	0.35	about 8800
V404 Cyg	12 ± 2	6.0	6.5	7800 ± 460 <sup>[16]</sup>
GX 339-4/V821 Ara		5–6	1.75	about 15000
GRS 1124-683/GU Mus	7.0 ± 0.6		0.43	about 17000
XTE J1550-564/V381 Nor	9.6 ± 1.2	6.0–7.5	1.5	about 17000
4U 1543-475/IL Lupi	9.4 ± 1.0	0.25	1.1	about 24000
XTE J1819-254/V4641 Sgr	7.1 ± 0.3	5–8	2.82	24000 – 40000 <sup>[17]</sup>
GRS 1915+105/V1487 Aql	14 ± 4.0	~1	33.5	about 40000
XTE J1650-500	9.7 ± 1.6 <sup>[18]</sup>	.	0.32 <sup>[19]</sup>	

Most companions are main sequence stars. Cygnus X-1 has a blue supergiant

[https://en.wikipedia.org/wiki/Stellar\\_black\\_hole\\_-\\_Candidates](https://en.wikipedia.org/wiki/Stellar_black_hole_-_Candidates)

Most massive stellar mass black hole known M33 X-7  
15.65 solar masses. Companion is also massive, about 70  
solar masses

*Period 3.45 days*

*3 Mly away*

*In the Triangulum  
galaxy*

*There are 26 BH  
candidates in  
Andromeda*



[https://en.wikipedia.org/wiki/M33\\_X-7](https://en.wikipedia.org/wiki/M33_X-7)

[http://www.nasa.gov/mission\\_pages/chandra/news/bonanza.html](http://www.nasa.gov/mission_pages/chandra/news/bonanza.html)