

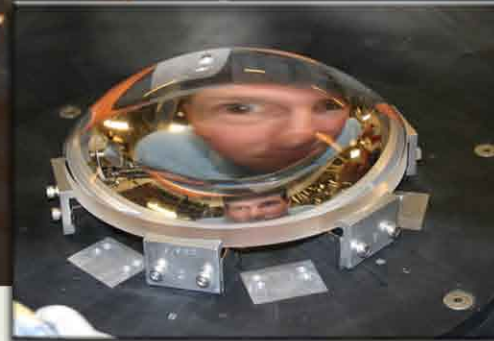
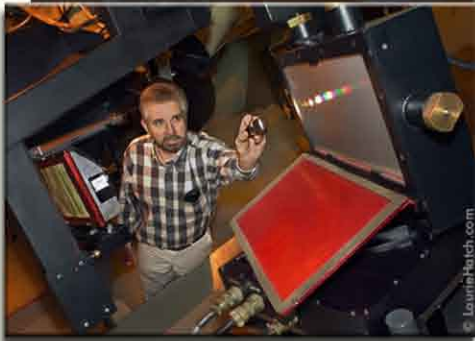
UCO Facilities

Lick Observatory

Keck Observatory

UCSC Technical

UCLA IR Laboratory



Lick Observatory



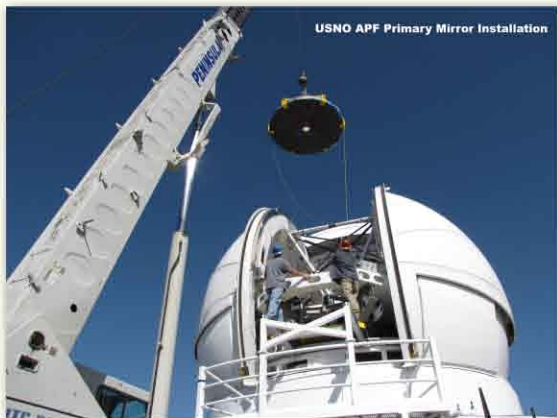
APF Under Construction



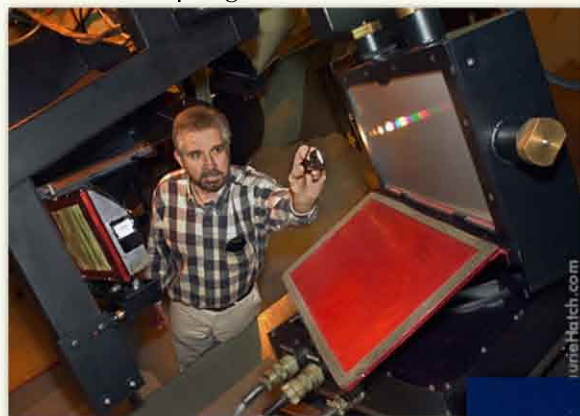
Lick Spring Vista ¹



Summer Visitors Program ¹



APF Primary Mirror Installation



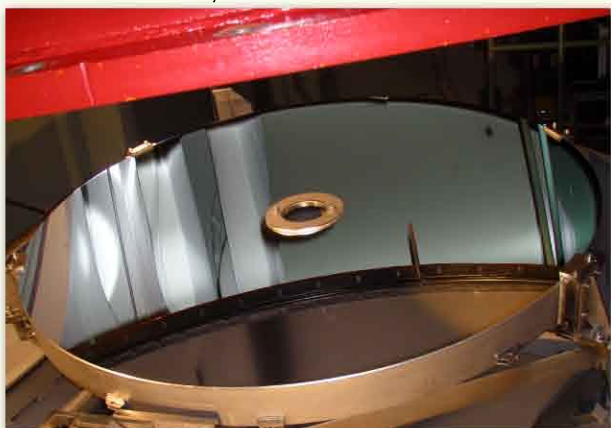
Hamilton Spectrograph ¹



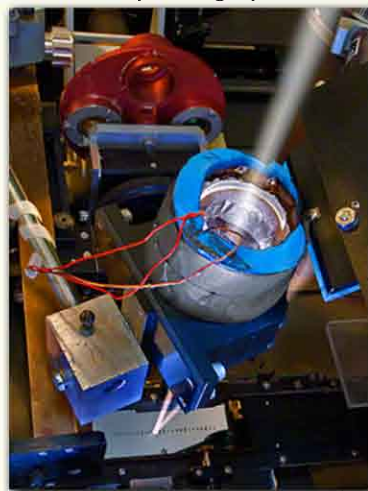
Winter Vista ¹



Final Mirror Cleaning



APF Mirror after Aluminizing



Spectrograph Iodine Cell ¹

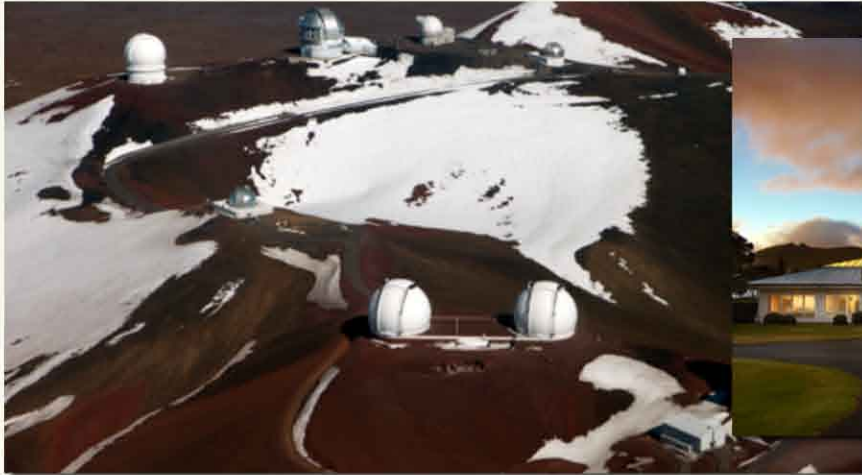


Shane Telescope Laser ¹



Cleaning Great Lick Refractor Lens ¹

Keck Observatory



Mauna Kea Summit³



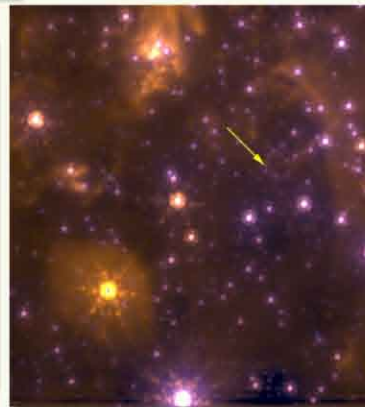
Waimea Headquarters²



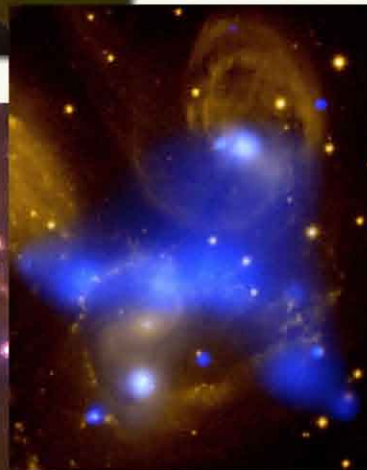
Mirror Barn¹



Dome Catwalk⁶



Galactic Center⁵



Stephan's Quintet⁴



Reflectivity Test⁶



Telescope⁶



Primary Mirror¹



Adaptive Optics Laser¹

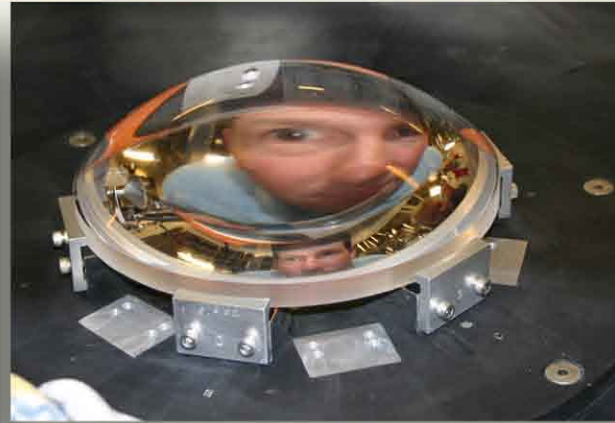


Twin Domes and Laser³

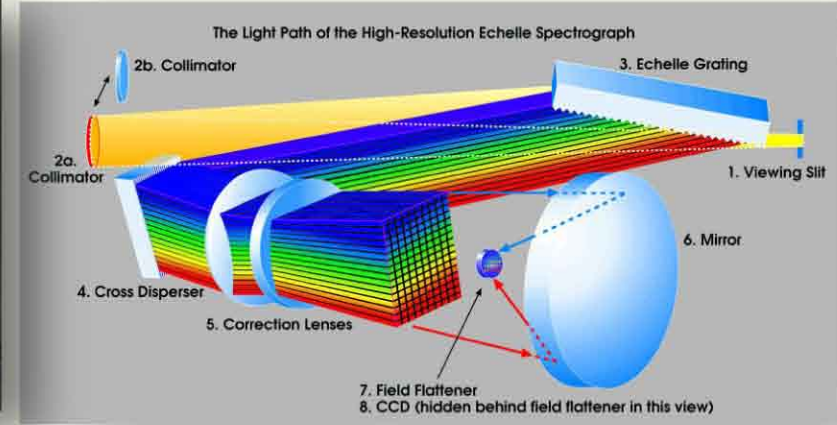
UCSC Technical Facilities



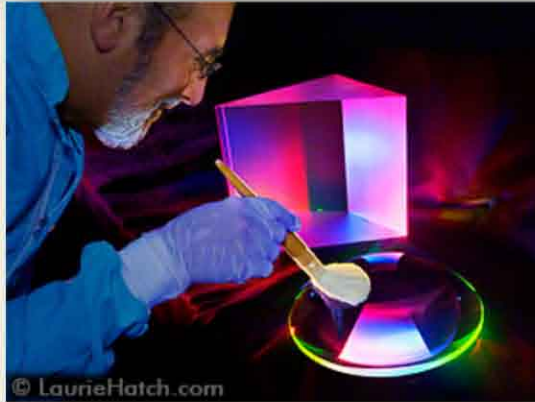
Measuring Flatness of Zerodur Mirror



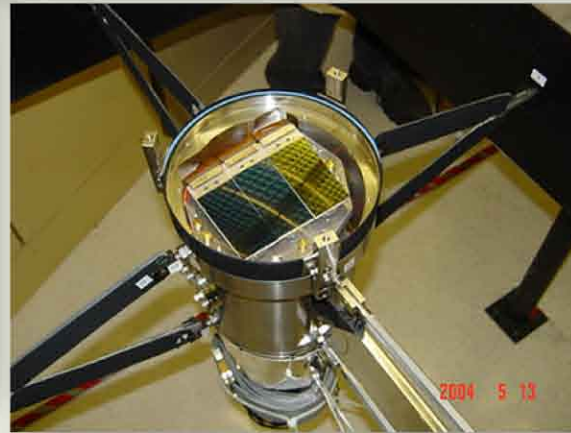
Inspecting APF Lens



HIRES Schematic



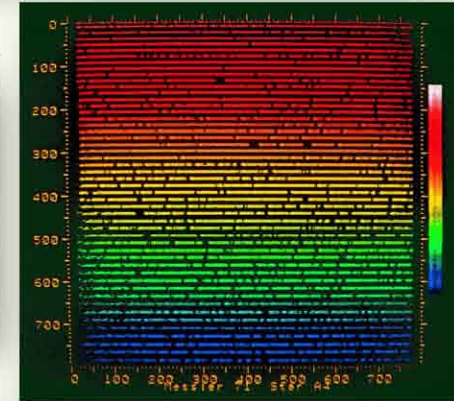
Inspecting APF Spectrograph Optics¹



HIRES CCD Upgrade



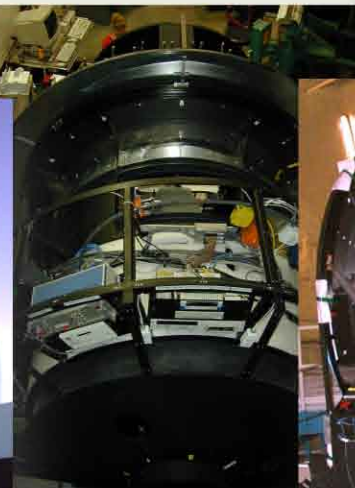
Assorted CCDs



HIRES Spectrum



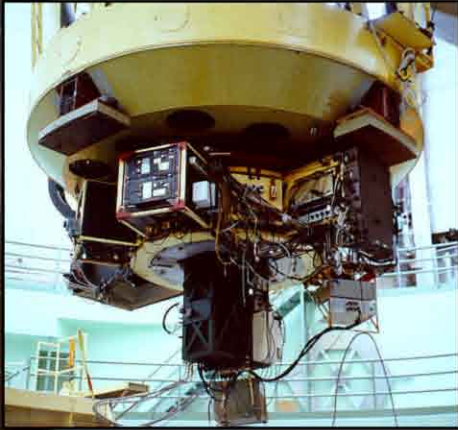
Astronomical Coatings Lab Clean Room



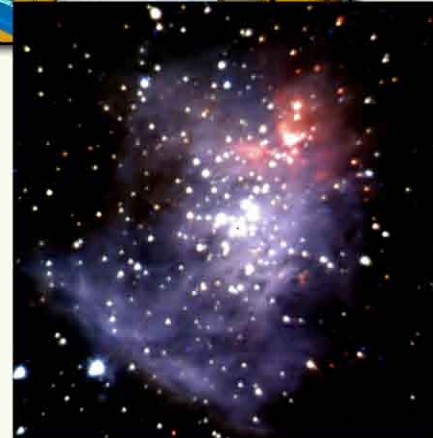
DEIMOS Spectrometer



UCLA Infrared Laboratory



Gemini with NGC 2024 Image



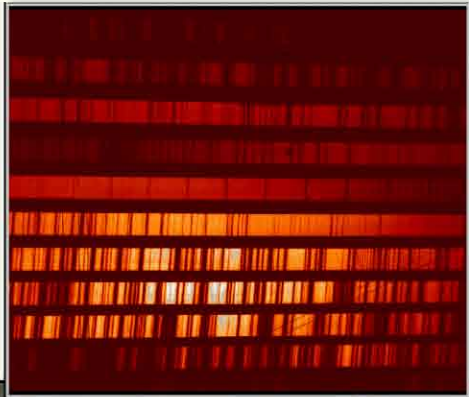
FLITECAM with Orion Nebula Image



KCAM with AO Neptune Image



MOSFIRE



NIRSPEC with Echellogram



GPI



OSIRIS and its Titan Image

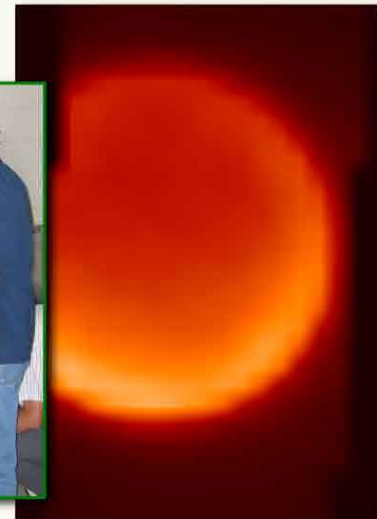


Image Credits

1. Laurie Hatch, lh@lauriehatch.com
2. Rick Peterson, Keck Observatory
3. Joey Stein, Keck Observatory
4. Bob Goodrich, Mike Bolte, and the ESI team
5. W.M. Keck Observatory and UCLA
6. W.M. Keck Observatory