

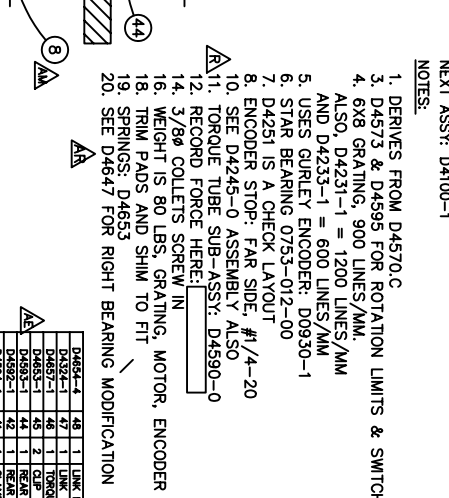
1. REC'D (SEE D4671 FOR SLIDER #4)
NEXT ASSY: D4100-1

NOTES:

- DERIVES FROM D4570.C
- D4573 & D4595 FOR ROTATION LIMITS & SWITCHES
- 6X8 GRATING, 900 LINES/MM, ALSO, D4231-1 = 1200 LINES/MM AND D4233-1 = 600 LINES/MM
- USES CURLEY ENCODER: D0930-1
- STAR BEARING 0735-012-00
- D4251 IS A CHECK LAYOUT
- ENCODER STOP: FAR SIDE, #1/4-20
- SEE D4245-0 ASSEMBLY ALSO
- TORQUE TUBE SUB-ASSY: D4590-0
- RECORD FORCE HERE:
- 3/8" COLLETS SCREW IN
- WEIGHT IS 80 LBS. GRATING, MOTOR, ENCODER
- TRIM PADS AND SHIM TO FIT
- SPRINGS: D4653
- SEE D4647 FOR RIGHT BEARING MODIFICATION

SLIDER #3 ASSEMBLY

QTY	DESCRIPTION	UNIT	REF. ECO
1	LINK MOUNT	STEEL	D4670-1
1	TOP PLATE	STEEL	D4670-1
1	DRIVE SHAFT	STEEL	D4670-1
1	BEARING FLEX MOUNT	ASSY	D4670-1
1	LEVER	STEEL	D4670-1
1	SPARE PLATE	STEEL	D4670-1
1	BEARING SPRINGER	STEEL	D4670-1
1	DRIVE DISK	STEEL	D4670-1
1	DRIVE SECTION	STEEL	D4670-1
1	LEFT BEARING	STEEL	D4670-1
1	RIGHT BEARING	STEEL	D4670-1
1	DRIVE SHAFT	STEEL	D4670-1
1	CAM FOLLOWERS	ASSY	D4670-1
1	ENCODER SYSTEM	NOTE 5	D4670-1
1	SHOULDER SCREW	NOTE 4	D4670-1
1	GRATING	NOTE 3	D4670-1
1	DRIVE DISK	NOTE 2	D4670-1
1	DRIVE SECTION	NOTE 1	D4670-1
1	LINKER BEARING BLOCK	STEEL	D4670-1



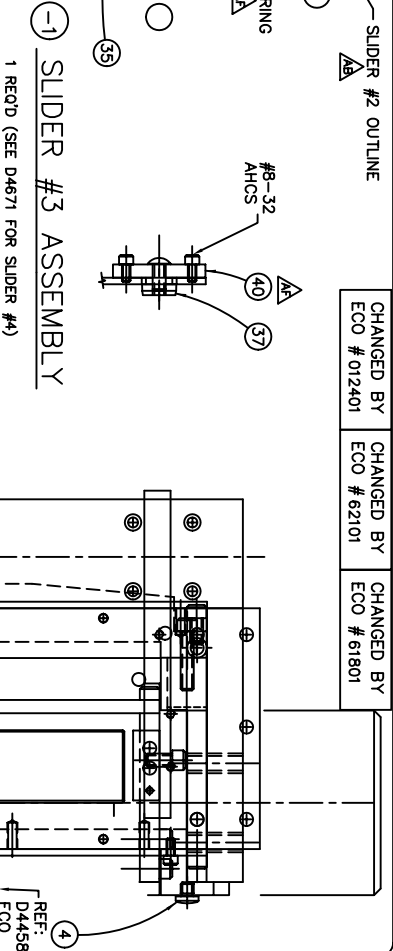
FULL

KECK/DEMOS

SLIDER #3 ASSEMBLY

D4571.AR

10. 4 30 88



CHANGED BY ECO # 012401

CHANGED BY ECO # 62101

CHANGED BY ECO # 61801

REF: D4458 ECO #62101