



GRATING PACIFIC.com

Grating Pacific, Inc.

TRACY, CA
800.491.7999

LOS ALAMITOS, CA
800.321.4314

Grating Pacific, LLC

SEATTLE, WA
800.243.3939

WOODBURN, OR
800.942.4041

[Home](#)

[About Us](#)

[Products & Services](#)

[Search](#)

[Contact Us](#)



Inlet Sets

More related links...

[▶ Standard Duty Square & Rectangular Inlet Sets](#)

[▶ Trench Grating & Inlet Sets](#)

[▶ Inlet Grates & Frames](#)

[▶ Trench Grating Systems](#)

HEAVY DUTY								
HEAVY DUTY SQUARE INLET SETS								
MODEL NUMBER	"W"	"S"	"d"	MODEL NUMBER	"W"	"S"	"d"	
H-0606-EZ	6"	6"	1-1/2"	H-3333-EZ	33"	33"	3"	
H-0808-EZ	8"	8"	1-1/2"	H-3636-EZ	36"	36"	3"	
H-1010-EZ	10"	10"	1-1/2"	H-4242-EZ	42"	42"	3-1/2"	
H-1212-EZ	12"	12"	1-1/2"	H-4848-EZ	48"	48"	3-1/2"	
H-1414-EZ	14"	14"	1-3/4"	H-5454-EZ	54"	54"	4"	
H-1616-EZ	16"	16"	2-1/4"	H-6060-EZ	60"	60"	4"	
H-1818-EZ	18"	18"	2-1/4"	H-6666-EZ	66"	66"	5"	
H-2020-EZ	20"	20"	2-1/4"	H-7272-EZ	72"	72"	5"	
H-2222-EZ	22"	22"	2-1/4"	H-7878-EZ	78"	78"	5"	
H-2424-EZ	24"	24"	2-1/4"	H-8484-EZ	84"	84"	6"	
H-2727-EZ	27"	27"	2-1/2"	H-9696-EZ	96"	96"	6"	
H-3030-EZ	30"	30"	3"					
HEAVY DUTY RECTANGULAR INLET SETS								
MODEL NUMBER	"W"	"S"	"d"	MODEL NUMBER	"W"	"S"	"d"	
H-1206-EZ	12"	6"	1-1/2"	H-0612-EZ	6"	12"	1-1/2"	
H-1210-EZ	12"	10"	1-1/2"	H-0618-EZ	6"	18"	2-1/4"	
H-1806-EZ	18"	6"	1-1/2"	H-0624-EZ	6"	24"	2-1/4"	
H-1812-EZ	18"	12"	1-1/2"	H-0630-EZ	6"	30"	3"	
H-2406-EZ	24"	6"	1-1/2"	H-0636-EZ	6"	36"	3"	
H-2412-EZ	24"	12"	1-1/2"	H-1218-EZ	12"	18"	2-1/4"	
H-2418-EZ	24"	18"	2-1/4"	H-1224-EZ	12"	24"	2-1/4"	
H-3006-EZ	30"	6"	1-1/2"	H-1230-EZ	12"	30"	3"	
H-3012-EZ	30"	12"	1-1/2"	H-1236-EZ	12"	36"	3"	
H-3018-EZ	30"	18"	2-1/4"	H-1248-EZ	12"	48"	3-1/2"	
H-3024-EZ	30"	24"	2-1/4"	H-1824-EZ	18"	24"	2-1/4"	
H-3606-EZ	36"	6"	1-1/2"	H-1830-EZ	18"	30"	3"	
H-3612-EZ	36"	12"	1-1/2"	H-1836-EZ	18"	36"	3"	
H-3618-EZ	36"	18"	2-1/4"	H-1842-EZ	18"	42"	3-1/2"	
H-3624-EZ	36"	24"	2-1/4"	H-1848-EZ	18"	48"	3-1/2"	
H-3630-EZ	36"	30"	3"	H-2430-EZ	24"	30"	3"	
H-4812-EZ	48"	12"	1-1/2"	H-2436-EZ	24"	36"	3"	
H-4818-EZ	48"	18"	2-1/4"	H-2442-EZ	24"	42"	3-1/2"	
H-4824-EZ	48"	24"	2-1/4"	H-2448-EZ	24"	48"	3-1/2"	
	48"	36"	3"		24"	54"	4"	

H-4836-EZ				H-2454-EZ			
H-6012-EZ	60"	12"	1-1/2"	H-2460-EZ	24"	60"	4"
H-6018-EZ	60"	18"	2-1/4"	H-3036-EZ	30"	36"	3"
H-6024-EZ	60"	24"	2-1/4"	H-3042-EZ	30"	42"	3-1/2"
H-6036-EZ	60"	36"	3"	H-3048-EZ	30"	48"	3-1/2"
H-6048-EZ	60"	48"	3-1/2"	H-3054-EZ	30"	54"	4"
H-7212-EZ	72"	12"	1-1/2"	H-3060-EZ	30"	60"	4"
H-7218-EZ	72"	18"	2-1/4"	H-3072-EZ	30"	72"	5"
H-7224-EZ	72"	24"	2-1/4"	H-3642-EZ	36"	42"	3-1/2"
H-7236-EZ	72"	36"	3"	H-3648-EZ	36"	48"	3-1/2"
H-7248-EZ	72"	48"	3-1/2"	H-3654-EZ	36"	54"	4"
H-8412-EZ	84"	12"	1-1/2"	H-3660-EZ	36"	60"	4"
H-8424-EZ	84"	24"	2-1/4"	H-4248-EZ	42"	48"	3-1/2"
H-8436-EZ	84"	36"	3"	H-4254-EZ	42"	54"	4"
H-8448-EZ	84"	48"	3-1/2"	H-4260-EZ	42"	60"	4"
H-9612-EZ	96"	12"	1-1/2"	H-4854-EZ	48"	54"	4"
H-9624-EZ	96"	24"	2-1/4"	H-4860-EZ	48"	60"	4"
H-9636-EZ	96"	36"	3"	H-4872-EZ	48"	72"	5"
H-9648-EZ	96"	48"	3-1/2"	H-6072-EZ	60"	72"	5"
H-9672-EZ	96"	72"	5"				

ANY OF THE ABOVE INLET SETS CAN BE CUSTOMIZED TO MEET THE SPECIFIC NEEDS OF YOUR CONSTRUCTION PROJECT. TO SELECT STANDARD DUTY ADA CONFORMING OR CLOSE MESH GRATINGS, SIMPLY SUBSTITUTE "SA" OR "SP" IN LIEU OF THE "S" COMPONENT IN THE MODEL NUMBER. HEAVY DUTY MODELS CAN BE SIMILARLY MODIFIED BY INSERTING "HA" OR "HP." TO SELECT ALTERNATIVE FRAME CONSTRUCTION, SELECT THE TYPE FROM [THE FRAMES SPECIFICATIONS TABLE](#) AND REPLACE COMPONENT "EZ" IN THE MODEL NUMBER. BOLTED GRATES MUST BE SPECIFIED ADDING THE "(B)" SUFFIX TO THE MODEL NUMBER.



Grating Pacific, Inc.

TRACY, CA
800.491.7999LOS ALAMITOS, CA
800.321.4314

Grating Pacific, LLC

SEATTLE, WA
800.243.3939WOODBURN, OR
800.942.4041[Home](#)[About Us](#)[Products & Services](#)[Search](#)[Contact Us](#)

Trench Grating & Inlet Sets

More related links...

▶ [Trench Grating Systems](#)

▶ [Inlet Sets- Standard Duty Table](#)

▶ [Inlet Grates & Frames](#)

▶ [Inlet Sets- Heavy Duty Table](#)

Grating Pacific Trench Grating Systems and Inlet Sets combine our most popular gratings and embed frames to provide economic, modular components for construction projects. These products are offered in our **Standard** series, designed to serve pedestrian loads, and our **Heavy Duty** series, designed to service the most demanding vehicular traffic. Each series is offered with multiple bar spacings (shown below) to address the specific needs of your application.

BOLTED GRATES

Grating Pacific Trench Systems and Inlet Sets are manufactured as component products with the grates easily removed for clearing debris from the trenches or inlets. Often security concerns or traffic conditions dictate that the grates must be bolted to the framing. When this option is specified, weld lugs or counter-sunk lands ([below](#)) are installed on the grates and the bolt is installed below the traffic surface of the grating. For high security applications, bolted grates with tamper-resistant fasteners may be further specified.

STANDARD DUTY



TYPE "S"

Designed to support pedestrian loads, type "S" grates are manufactured from welded grating with durable 3/16" (min.) thick bearing bars. Open area of nearly 80% allows for fast clearing of moisture and run-off.



TYPE "SA"

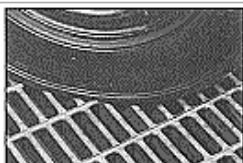
Standard Duty type "SA" grates are designed to conform with strict ADA spacing requirements. Open area of 66% allows for drainage and ventilation while maintaining a safe traffic surface.



TYPE "SP"

Type "SP" grates also comply with ADA spacing requirements. Additionally, the 1/4" maximum clear opening between the bars make these grates desirable in areas subject to pedestrian traffic where high heeled shoes are common.

HEAVY DUTY



TYPE "H"

Type "H" grates are manufactured from stout, 3/8" (min.) thick bearing bars. Designed to serve



TYPE "HA"

Heavy Duty type "HA" grates are similar to type "SA" above with the



TYPE "HP"

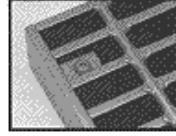
Heavy duty type "HP" grates are similar to type "SP" above with the exception that these

the most rigorous truck and forklift loads. With nearly 70% open area, these products are ideal for parking lot and highway drain applications. *exception that these grates are additionally designed to support forklift and vehicular loads.* *grates are additionally designed to support forklift and vehicular loads.*

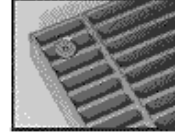
**BOLTING
OPTIONS:**



**BOLTED
GRATES**



**TAMPER
RESISTANT
BOLT**



**CLOSE
MESH
BOLTING**



EXHAUST FAN,48 IN

Slantwall Exhaust Fan, Direct Drive, Propeller Dia 48 In, 19515 CFM @ 0.000-In SP, Volts 230, 60 Hz, 1 Phase, Full Load Amps 5.8, HP 1, Motor RPM 830, Motor Type Capacitor Start, Motor Enclosure TEFC, Motor Insulation Class B, Fan RPM 830, Bearing Type Permanently Lubricated Ball, Height 57 1/4 In, Width 54 3/4 In, Max Depth 59 3/4 In, Propeller Material Galvanized Steel, Number of Blades 4, 18.3 CFM/Watt @ 0.000-In SP, Includes Intake Shutter, 1 x 2 In Mesh Discharge Screen

Grainger Item #	4B051
Price (ea.)	\$1,016.00
Brand	DAYTON
Mfr. Model #	4B051
Ship Qty.	1
Sell Qty. (Will-Call)	1
Ship Weight (lbs.)	134.0
Usually Ships	Today
Catalog Page No.	3748

Price shown may not reflect your price. Log in or register.

Additional Info

Direct-Drive Slantwall Exhaust Fans

Unit combines a galvanized steel housing and fan.

Shipped completely assembled, ready to install. Includes fan in housing, intake shutter, and 1 x 2" mesh discharge screen.

Motor is switchless, TENV sealed ball bearing, permanent split capacitor. Features automatic reset thermal protection, anti-rust shaft protection, and shaft-end bearing with cup-shaped slinger to protect against dirt and moisture.

- No pulleys or belt to adjust or replace
- Corrosion resistant shutter held with quick release turn button latches
- Mounts flush to inside of building

Tech Specs

Type: Direct Drive
Item: Slantwall Exhaust Fan
Propeller Dia. (In.): 48
CFM @ 0.000-In. SP: 19515
CFM @ 0.100-In. SP: 16999
Voltage: 230
Hz: 60
Phase: 1
Full Load Amps: 5.8
HP: 1
Motor RPM: 830
Motor Type: Capacitor Start
Motor Enclosure: TEFC
Motor Insulation: Class B
Fan RPM: 830
Mounting Location: Wall

Optional Accessories

CONTROL,COIL BULB



Item #: 4LZ94
Brand: DAYTON
Usually Ships: Today
Price (ea): \$35.75

Alternate Products

EXHAUST FAN,36 IN

Bearing Type: Permanently Lubricated Ball

Height (In.): 57 1/4

Width (In.): 54 3/4

Max. Depth (In.): 59 3/4

Frame Material: Galvanized Steel

Propeller Material: Galvanized Steel

Number of Blades: 4

Opening Required H (In.): 57 1/4

Opening Required W (In.): 54 3/4

CFM/Watt @ 0.000-In. SP: 18.3

CFM/Watt @ 0.100-In. SP: 15.2

Includes: Intake Shutter, 1 x 2 In Mesh Discharge Screen



Item #: 4B052

Brand: DAYTON

Usually Ships: Today

Price (ea): \$699.50

Repair Parts

There is currently no Repair Parts information for this item.

Notes & Restrictions

There are currently no notes or restrictions for this item.

MSDS

This item does not require a **Material Safety Data Sheet (MSDS)**.

Required Accessories

There are currently no required accessories for this item.